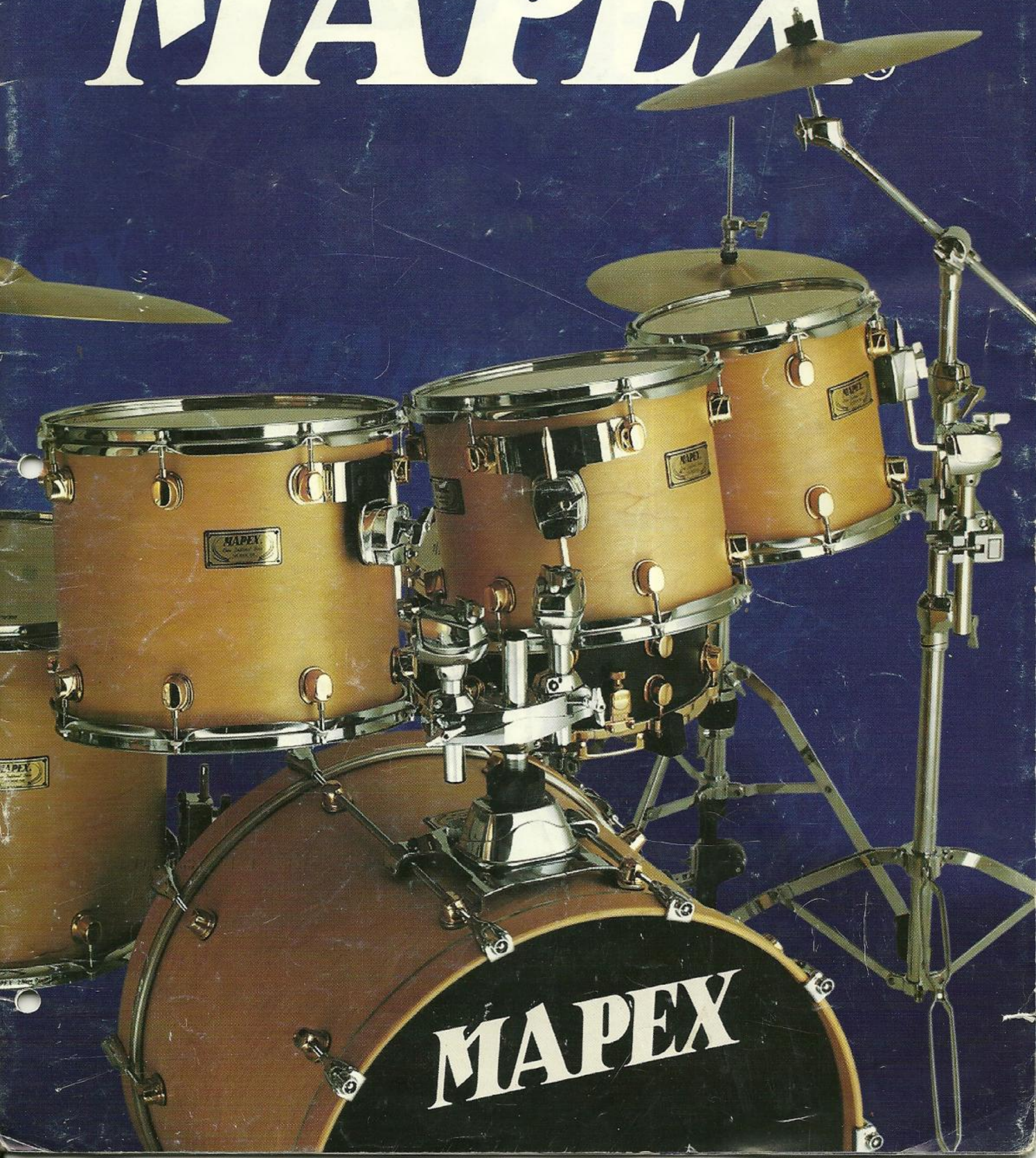
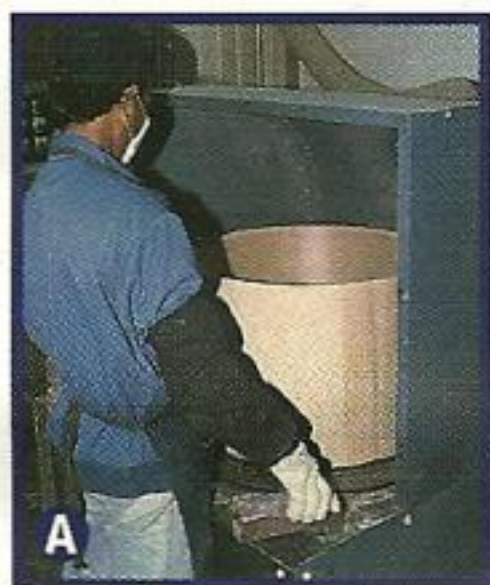


MAPEX



Mapex

The youngest and fastest growing drum company on the planet, Mapex was formed in 1989 by the K.H.S.



A

Group. Since K.H.S. already had over 50 years of experience in the manufacture and distribution of musical instruments, developing the

Mapex drum line was both a natural extension and a new direction for the corporation. Perhaps the biggest advantage of the Mapex/KHS connection was that Mapex

immediately became one of only a handful of truly international drum makers with



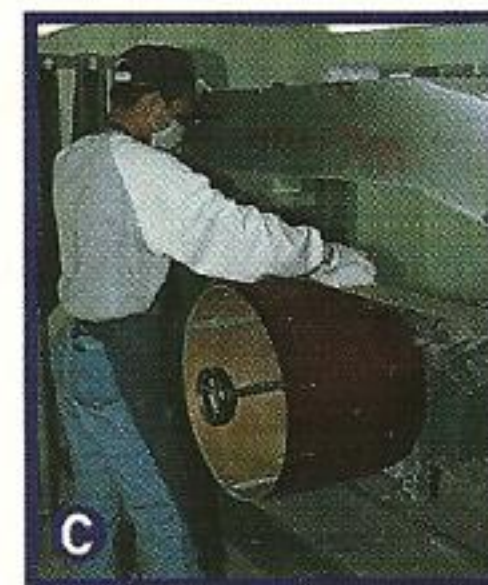
B

complete control over every aspect of production—from raw materials to finished drums. Right from the beginning, this enabled Mapex

to offer the highest quality, most advanced and widest variety of drums, hardware and accessories.

Today, Mapex Black Panther Snare Drums include a virtually limitless

selection of snare drum types and sizes while Orion Classic and Saturn Pro drumsets provide players a range of



C

custom features in a choice of traditional, thin all-maple or thicker maple-mahogany composite shells. For semi-pro drummers

Mapex offers the exceptional value of the Mars Pro and Mars series, with the Venus Plus and Venus lines raising the standards of affordably priced entry-level kits to a new, higher level.



Mapex Drums

But quality, variety and value are only the start of what sets Mapex apart. The Mapex drum team also



realizes that, from a drummer's perspective, performance and appearance are what really count. This is why every

Mapex drum is designed and crafted to produce a full-bodied, well-balanced sound that is complemented by the beauty of Mapex's durable wrapped, wax and lacquer finishes.

In fact, with Mapex's experience and expertise plus their commitment to advancing the art and the



technology of drumming, it's no wonder that, despite their youth, Mapex Drums have already caught the eyes and ears of the

world's top drummers. And, with the superb collection of Mapex drums and hardware featured on the following pages, they're about to catch yours, too.

Mapex Drum & Hardware Production

- A** Wood drum shells for Mapex Black Panther, Orion Classic, Saturn Pro, Mars Pro, Mars, Venus Plus and Venus series drums are made in Mapex factories from hand-selected maple and mahogany.
- B** Skilled Mapex craftsmen apply and carefully inspect bearing edges before preparing each shell for finishing.
- C** Experienced and highly trained specialists apply mirror-like lacquer finishes that require more than a dozen sanding, painting and buffing steps
- D** Drum shells are inspected before, during and after final assembly. All Mapex drum shells feature a Limited Lifetime Warranty.
- E** Drum stands, pedals and accessories are also produced in Mapex's own factories.

Orion Classic • Custom Set-Up • Wax Natural

Snare	Bass Drum	Rack Toms	Floor Tom
6.5x14 Maple Black Panther	18x24	9x10, 10x12, 12x14	16x16, 16x18
S950 Snare Stand • B950 Retractable Boom Cymbal Stands (x4) • H950 Hi-Hat Stand			
P980 Double BD Pedal • TH685 Double Tom Holder			
AC901 Clamp • TH684 Tom Arm • CH71 Auxiliary Hi-Hat Arm			
Cymbals not included.			

Specifications subject to change without notice.

Black Panther
Snare Drums

4

Orion Classic
Drums & Drumsets

8

Saturn Pro
Drums & Drumsets

12

Mars Pro/Mars
Drums & Drumsets

16

Venus Plus/Venus
Drums & Drumsets

20A

Bass Drum Pedals
Hi-Hat Stands

20

Hardware
Accessories

22

MAPEX®

Black Panther



Since they were first introduced, Mapex Black Panther Snare Drums have almost single-handedly created a new wave of snare drum-mania. Visually and sonically unique (and ideal for both primary and auxiliary applications), the range includes over two dozen player-selected combinations of sizes, shell materials and hardware for an incredible selection of sounds and styles.

The current collection of Black Panthers includes relatively thin brass, steel and maple shells which feature an ultra-consistent 45° bearing edge. This unique configuration not only allows each shell to achieve maximum sensitivity, clarity and resonance,

it also helps to amplify the sonic differences between the different types of materials. The higher, brighter tonal tendencies of steel as well as the midrange character and response of brass are easily appreciated. With the top and middle of the snare drum tonal spectrum covered by the brass and steel Panthers, the thin maple shell models are free to occupy the warmer, darker, lower frequency range without the choking and limited tuning range often associated with thicker drums.

Black Panthers also incorporate a complete list of professional upgrades such as low-mass lugs, smooth and easy operating adjustable snare throw-offs,

heavy-gauge steel Powerhoops or super-heavy Die-Cast counterhoops, nylon tension rod washers and machined-brass lug nuts—exclusive refinements designed to provide both superior appearance and performance.

Described as “sleek, elegant yet muscular”¹, “a full line of individual voices”² and “flawless in workmanship, sound and appearance”³ by the world’s leading drum publications and chosen by more and more of the world’s leading players, the Panther’s unique combination of quality, variety and value puts the entire Black Panther line well within reach of every drummer.



ST3351D



ST4351D



ST4551D



ST4651D



BR2351



BR2551



BR3351D



BR4351D



BR4551D



BR4651D



ML2550



ML2700



ML3350D



ML4550D



ML4650D



BE2350



BE2550



BE2700



BE3350D



BE3450D



BE3550D



BE4350D



BE4550D



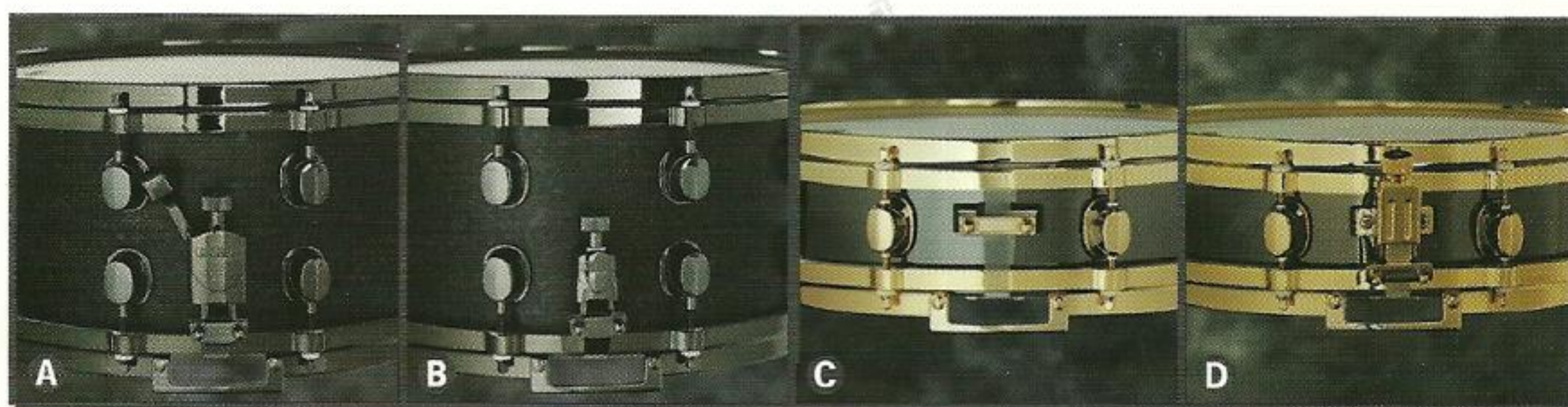
BE4650D

¹Liam Mulholland (Drum! Magazine, May 1997)
²Chap Ostrander (Modern Drummer Magazine, August 1997)
³Manni von Bohr (Drums & Percussion Magazine, April 1997)

Black Panther Snare Drums

model	size	shell	finish	hoops	lugs/throw-off
Steel					
ST3351D	3.5x13	1mm Steel	Black Chrome	Chrome Die-Cast	Chrome
ST4351D	3.5x14	1mm Steel	Black Chrome	Chrome Die-Cast	Chrome
ST4551D	5.5x14	1mm Steel	Black Chrome	Chrome Die-Cast	Chrome
ST4651D	6.5x14	1mm Steel	Black Chrome	Chrome Die-Cast	Chrome
Brass					
BR2351	3.5x12	1.2mm Brass	Black Chrome	24K Gold 2.3mm Powerhoops	24K Gold
BR2551	5.5x12	1.2mm Brass	Black Chrome	24K Gold 2.3mm Powerhoops	24K Gold
BR3351D	3.5x13	1.2mm Brass	Black Chrome	24K Gold Die-Cast	24K Gold
BR3551D*	5.5x13	1.2mm Brass	Black Chrome	24K Gold Die-Cast	24K Gold
BR4351D	3.5x14	1.2mm Brass	Black Chrome	24K Gold Die-Cast	24K Gold
BR4551D	5.5x14	1.2mm Brass	Black Chrome	24K Gold Die-Cast	24K Gold
BR4651D	6.5x14	1.2mm Brass	Black Chrome	24K Gold Die-Cast	24K Gold
Traditional Maple					
ML2550	5.5x12	5mm Maple	Flat Black	24K Gold 2.3mm Powerhoops	24K Gold
ML2700	7x12	5mm Maple	Flat Black	24K Gold 2.3mm Powerhoops	24K Gold
ML3350D	3.5x13	5mm Maple	Flat Black	24K Gold Die-Cast	24K Gold
ML4550D	5.5x14	5mm Maple	Flat Black	24K Gold Die-Cast	24K Gold
ML4650D	6.5x14	5mm Maple	Flat Black	24K Gold Die-Cast	24K Gold
Birdseye Maple					
BE2350	3.5x12	6mm Birdseye Maple	Flat Black	Black Chrome 2.3mm Powerhoops	Black Chrome
BE2550	5.5x12	6mm Birdseye Maple	Flat Black	Black Chrome 2.3mm Powerhoops	Black Chrome
BE2700	7x12	6mm Birdseye Maple	Flat Black	Black Chrome 2.3mm Powerhoops	Black Chrome
BE3350D	3.5x13	6mm Birdseye Maple	Flat Black	Black Chrome Die-Cast	Black Chrome
BE3450D	4.5x13	6mm Birdseye Maple	Flat Black	Black Chrome Die-Cast	Black Chrome
BE3550D	5.5x13	6mm Birdseye Maple	Flat Black	Black Chrome Die-Cast	Black Chrome
BE4350D	3.5x14	6mm Birdseye Maple	Flat Black	Black Chrome Die-Cast	Black Chrome
BE4550D	5.5x14	6mm Birdseye Maple	Flat Black	Black Chrome Die-Cast	Black Chrome
BE4650D	6.5x14	6mm Birdseye Maple	Flat Black	Black Chrome Die-Cast	Black Chrome

* Shown on page 13 with Saturn Pro Model No. SP603



A B Pneumatic Adjustable Snare Throw-Off & Butt Side

Smooth and efficient side-to-side operation with snare tension adjustment on both throw-off and butt side of mechanism.

C D Single Cam Adjustable Snare Throw-Off & Butt Side

Straight-forward design with single-side snare tension adjustment is offered on piccolo snare drums.



Black Panther Snare Drums & Components

Shown above are a variety of 12, 13 and 14 inch Steel, Brass, Traditional Maple and Birdseye Maple Black Panthers along with an assortment of the Black Chrome, Chrome and 24K Gold-plated components that are incorporated to give each drum its distinctive appearance and tone.

Orion Classic



Orion Classic • Model No. TM622 • Wax Emerald Green

Snare	Bass Drum	Rack Toms
6.5x14 Maple Black Panther	18x22	9x10, 10x12, 12x14, 14x16

S950 Snare Stand • B950 Retractable Boom Cymbal Stands (x2) • H950 Hi-Hat Stand
P950 BD Pedal • TH685 Tom Holder • TS950 Double Tom Stand

Shown with P980 Double Bass Drum Pedal, AC901 Clamp, B75 Boom Cymbal Arm and additional B950 Retractable Boom Cymbal Stands (x2) and C950 Straight Cymbal Stand. Cymbals not included.

Also available in Birdseye Maple (Model No. TBE622) or with 16x20 bass drum (Model No. TM602 or TBE602).



Orion Classic • Model No. TM400 • Transparent Amber

<i>Snare</i>	<i>Bass Drum</i>	<i>Rack Toms</i>	<i>Floor Tom</i>
5.5x14 Maple Black Panther	16x20	10x12	14x14

S950 Snare Stand • B950 Retractable Boom Cymbal Stand • H950 Hi-Hat Stand

P950 BD Pedal • TH685 Tom Holder • B75 Boom Cymbal Arm

Shown with additional C950 Straight Cymbal Stand. Cymbals not included.

Also available in Birdseye Maple (Model No. TBE400).



Orion Classic • Model No. TM502 • Transparent Diamond Blue

<i>Snare</i>	<i>Bass Drum</i>	<i>Rack Toms</i>
6.5x14 Maple Black Panther	16x20	9x10, 10x12, 12x14

S950 Snare Stand • B950 Retractable Boom Cymbal Stands (x2) • H950 Hi-Hat Stand

P950 BD Pedal • TH685 Tom Holder • AC901 Clamp • TH684 Tom Arm

Shown with additional C950 Straight Cymbal Stand. Cymbals not included.

Also available in Birdseye Maple (Model No. TBE502).



Orion Classic • Model No. TBE525 • Antique Ivory Birdseye

<i>Snare</i>	<i>Bass Drum</i>	<i>Rack Toms</i>	<i>Floor Tom</i>
6.5x14 BE Maple Black Panther	18x22	10x12, 11x13	16x16

S950 Snare Stand • B950 Retractable Boom Cymbal Stands (x2) • H950 Hi-Hat Stand
P950 BD Pedal • TH685 Tom Holder

Shown with P980 Double Bass Drum Pedal. Cymbals not included.

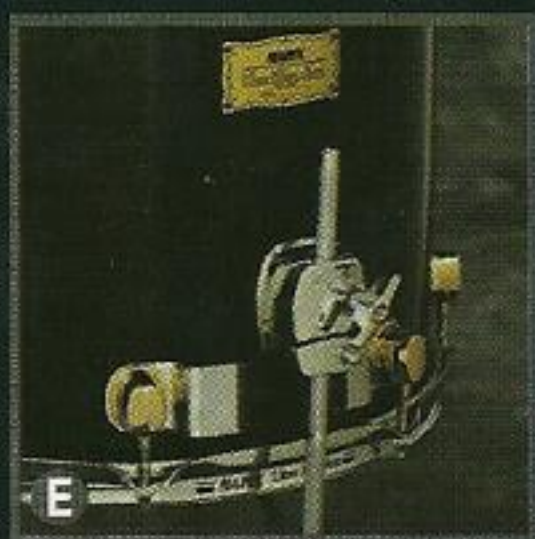
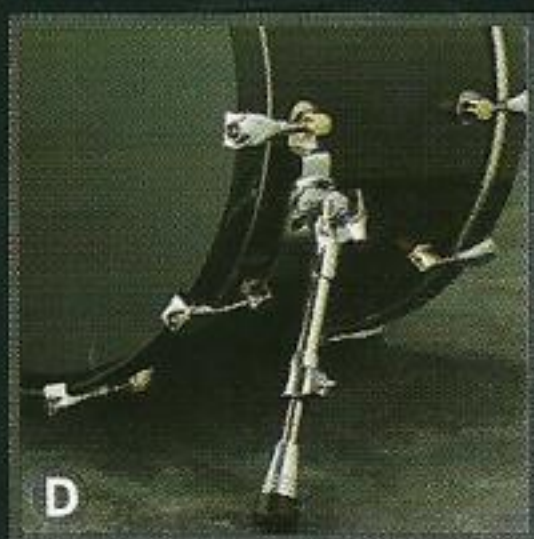
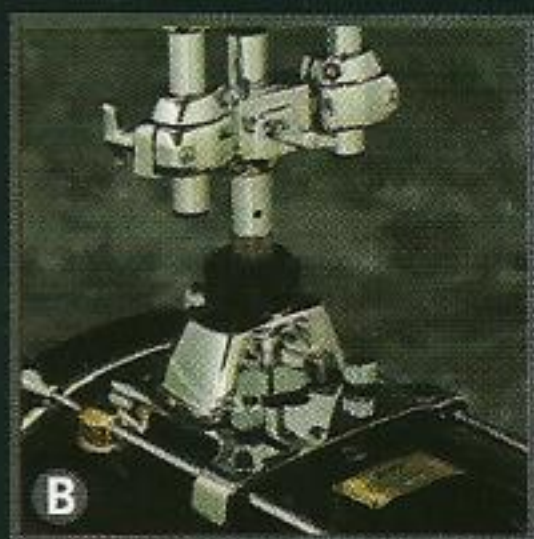


Orion Classic • Model No. TM525 • Wax Cherry Red

<i>Snare</i>	<i>Bass Drum</i>	<i>Rack Toms</i>	<i>Floor Tom</i>
6.5x14 Maple Black Panther	18x22	10x12, 11x13	16x16

S950 Snare Stand • B950 Retractable Boom Cymbal Stands (x2) • H950 Hi-Hat Stand
P950 BD Pedal • TH685 Tom Holder

Shown with 3.5x12 Brass Black Panther Snare Drum, P980 Double Bass Drum Pedal and additional B950 Retractable Boom Cymbal Stand, C950 Straight Cymbal Stand and S950 Snare Drum Stand. Cymbals not included.



From their thin, ultra-resonant, all-maple shells and precisely applied bearing edges to their universal application of the I.T.S. Isolated Mounting System and specially selected Remo drumheads, Orion Classic drums bring together the quality of custom made drums and the consistency of advanced drum production processes. Orion Classics feature the characteristic warmth, presence and tuning range of traditional maple along with an uncommon balance of focus and resonance.



With Orion Classic drums, drumsets can easily be created from individual components or preselected configurations that now come equipped with Mapex's newly designed, versatile and reliable 950 Series "Performing Artist" hardware (see page 22). Offered in both Traditional (TM) and Birdseye Maple (TBE) with gold-plated lugs and rich, deep, hand-rubbed lacquer or wax finishes, Orion Classic drums represent more than just Mapex's top-of-the-line. They represent modern drumming's state-of-the-art.

Orion Classic Features

- A** 6-Ply Traditional all-maple shell with I.T.S. isolated mounts and low-mass, 24k gold-plated lugs. All Orion Classic drums are also available in the Birdseye Series which features a seventh, outer-ply of rare Birdseye Maple.
- B** TH685 isolation-style double tom holder allows variable height and 2" of front-to-back position adjustment. (U.S. Patent No. 5660364)
- C** Orion Classic kits include matching Black Panther Maple Snare Drum.
- D** Orion Classic bass drums feature I.T.S. spurs, recessed drumkey tension rods and matching maple hoops.
- E** I.T.S. isolation-style leg brackets and spring-loaded legs are standard on Orion Classic floor toms.

Orion Classic Component Drum Sizes

Snare Drums (Black Panther)	Bass Drums	Rack Toms	Floor Toms
5.5x14	16x18	8x8	14x14
6.5x14	14x20, 16x20	8x10, 9x10, 10x10	16x16
	16x22, 18x22	8x12, 10x12, 12x12	16x18
	18x24	9x13, 11x13, 13x13	
		12x14, 14x14	
		13x15	
		14x16	

Orion Classic drumshells are covered by the Mapex Limited Lifetime Warranty.



Orion • WG
Wax
Emerald Green



Orion • WN
Wax
Natural



Orion • WY
Wax
Cherry Red



Orion • TA
Transparent
Amber



Orion • PB
Polished
Black



Orion • TD
Transparent
Diamond Blue



Orion • EG
Transparent
Emerald Green



Orion • AI
Antique
Ivory



Orion • TB
Transparent
Black



Orion • TR
Transparent
Red



Orion • TV
Transparent
Violet



Orion • AI
Birdseye
Antique Ivory



Orion • TV
Birdseye
Transparent Violet

Saturn Pro



Saturn Pro • Model No. SP502 • Transparent Diamond Blue

Snare

6.5x14 Wood

Bass Drum

16x20

Rack Toms

9x10, 10x12, 12x14

S550 Snare Stand • C550 Straight Cymbal Stand • B550 Boom Cymbal Stand • H550 Hi-Hat Stand
P560 BD Pedal • TH682 Tom Holder • AC901 Clamp • TH684 Arm

*Shown with additional S550 Snare Drum Stand and 3.5x14 Brass Black Panther Snare Drum.
Cymbals not included.*



Saturn Pro • Model No. SP603 • Wax Natural

<i>Snare</i>	<i>Bass Drum</i>	<i>Rack Toms</i>
5.5x13 Brass Black Panther	16x20	8x8, 9x10, 10x12, 12x14
S550 Snare Stand • C550 Straight Cymbal Stand • B550 Boom Cymbal Stand • H550 Hi-Hat Stand P560 BD Pedal • TH682 Tom Holder • AC901 Clamp (x2) • TH684 Arm (x2)		
<i>Shown with 7x12 Maple Black Panther Snare Drum and additional S550 Snare Drum Stand, C550 Straight Cymbal Stand and B550 Boom Cymbal Stand. Cymbals not included.</i>		



Saturn Pro • Model No. SP626 • Wax Emerald Green

<i>Snare</i>	<i>Bass Drum</i>	<i>Rack Toms</i>
5.5x14 Wood	18x22	9x10, 10x12, 12x14, 14x16
S550 Snare Stand • C550 Straight Cymbal Stand • B550 Boom Cymbal Stand • H550 Hi-Hat Stand P560 BD Pedal • TH682 Tom Holder • TS550 Double Tom Stand		
<i>Shown with additional C550 Straight Cymbal Stand. Cymbals not included.</i>		



Saturn Pro "Philly" • Model No. SP500 • Polished Black

<i>Snare</i>	<i>Bass Drum</i>	<i>Rack Toms</i>	<i>Floor Tom</i>
5x14 Wood	14x20	8x10, 8x12	14x14

S550 Snare Stand • C550 Straight Cymbal Stand • H550 Hi-Hat Stand

P560 BD Pedal • TH682 Tom Holder

Available only in Polished Black and Matte Natural finishes. Cymbals not included.



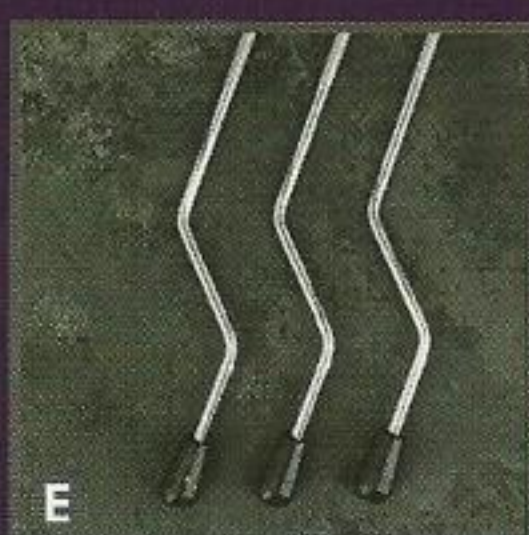
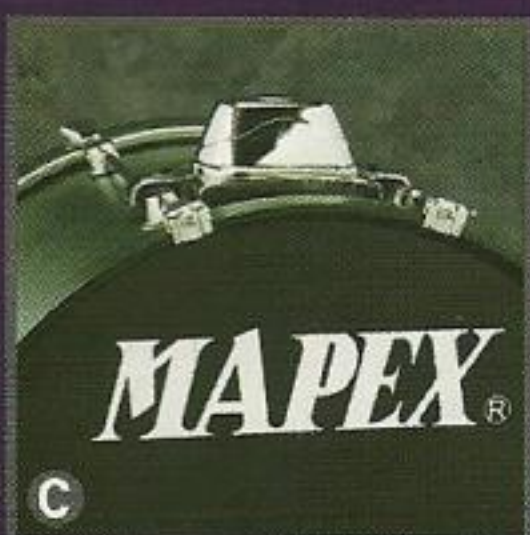
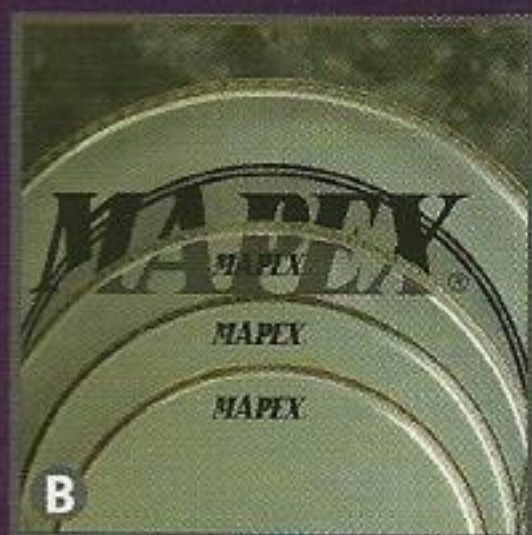
Saturn Pro • Model No. SP525 • Transparent Red

<i>Snare</i>	<i>Bass Drum</i>	<i>Rack Toms</i>	<i>Floor Tom</i>
6.5x14 Wood	16x22	10x12, 11x13	16x16

S550 Snare Stand • C550 Straight Cymbal Stand • B550 Boom Cymbal Stand • H550 Hi-Hat Stand

P560 BD Pedal • TH682 Tom Holder

Cymbals not included.



By combining top quality components, workmanship and features with advanced production techniques, Saturn Pro drums provide the sound, response and appearance professional players demand plus the value all players can appreciate. Saturn Pro's 7-Ply maple-mahogany shell configuration creates a drum sound with a balance of brightness and projection while Mapex's low mass lug design and exclusive I.T.S. isolated system on Saturn Pro rack tom, floor tom and



bass drum mounts and legs allow maximum drum resonance. Additional enhancements such as genuine Remo heads and matching wood snare drums enable Saturn Pro kits to cover a wide tonal spectrum with superior consistency from drum to drum. Available in a full range of component sizes as well as popular drumset packages with sturdy 550 Series hardware, all Saturn Pro drums features a high-grade, eight-coat finish in a choice of transparent, solid and wax color options.

Saturn Pro Features

- A** 7-Ply composite shell features mahogany core with maple inner and outer plies and a choice of high-gloss lacquer or vintage Wax finishes. Rack and floor toms also feature I.T.S. isolation arm and leg mounts.
- B** Remo Ambassador snare and tom-tom and PowerStroke 3 bass drum heads are featured on Saturn Pro.
- C** Bass Drums include matching wood hoops and I.T.S. tom-tom holders and spurs
- D** Saturn Pro kits include matching wood snare drum.
- E** Spring loaded floor tom legs enhance drum resonance.

Saturn Pro Component Drum Sizes

Snare Drums	Bass Drums	Rack Toms	Floor Toms
5x14*	16x18	8x8	14x14
5.5x14	14x20*, 16x20	8x10*, 9x10, 10x10	16x16
6.5x14	16x22, 18x22	8x12*, 10x12, 12x12	16x18
	18x24	11x13, 13x13	
		12x14, 14x14	
		14x16	

* Available only with Saturn Pro "Philly" model drumset (SP500).

Saturn Pro drumshells are covered by the Mapex Limited Lifetime Warranty.



Saturn Pro • PB*
Polished
Black



Saturn Pro • MN*
Matte
Natural



Saturn Pro • WG
Wax
Emerald Green



Saturn Pro • WN
Wax
Natural



Saturn Pro • TA
Transparent
Amber



Saturn Pro • TD
Transparent
Diamond Blue



Saturn Pro • TB
Transparent
Black



Saturn Pro • TR
Transparent
Red

Mars Pro/Mars

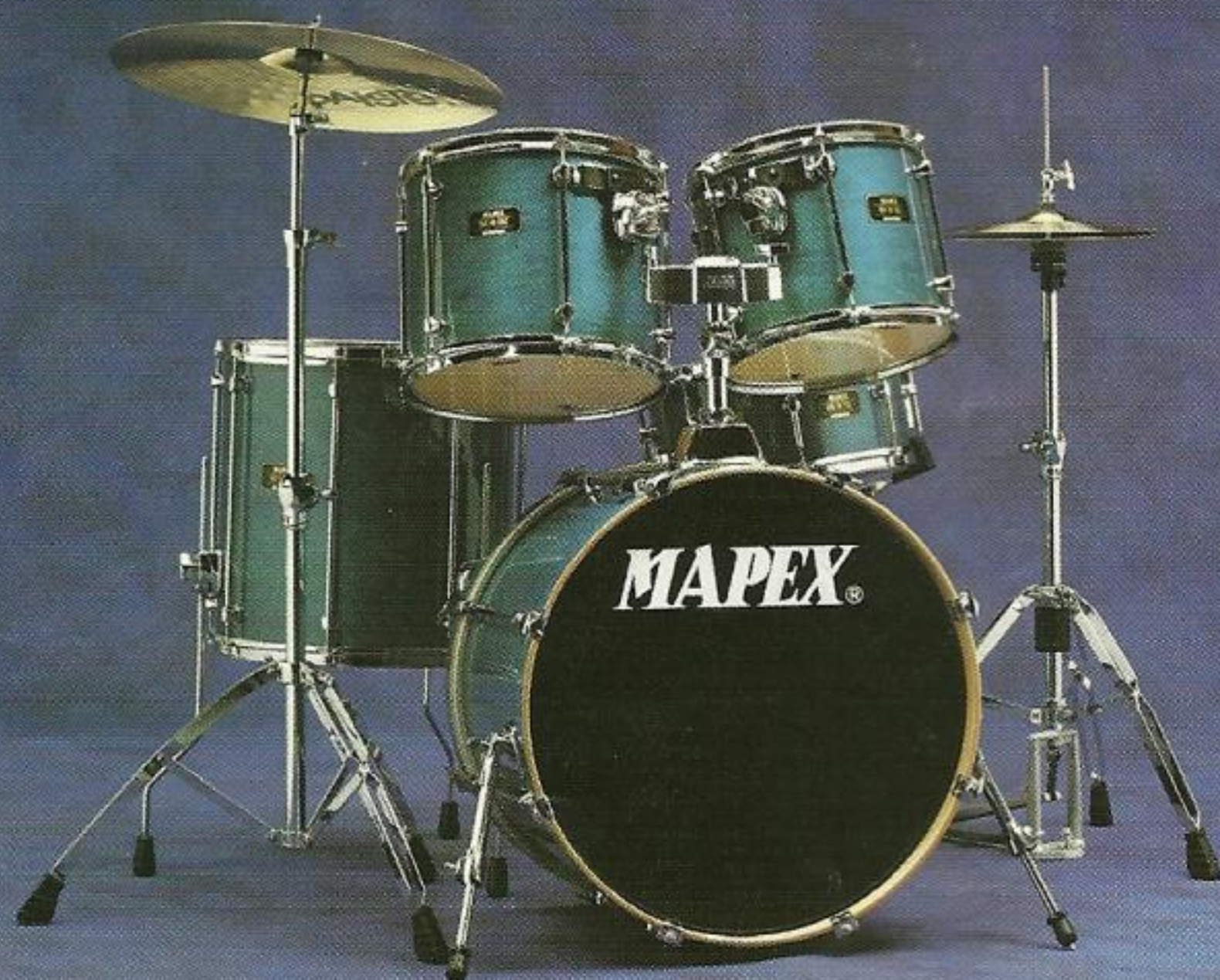


Mars Pro SE • Model No. MP440SE • Transparent Midnight Black

Snare	Bass Drum	Rack Tom	Floor Tom
6.5x14 Wood	18x24	11x13	16x16

S550 Snare Stand • B550 Boom Cymbal Stand • H550 Hi-Hat Stand
P560 BD Pedal • AC901 Clamp • TH684 Arm

Shown with additional C550 Straight Cymbal Stand. Cymbals not included.



This set with

**Mars Pro SE
Model No. MP502SE
(not shown)**

<i>Snare</i>	<i>Bass Drum</i>
6.5x14 Metal	16x20

Rack Toms

10x10, 10x12, 12x14

S550 Snare Stand

C550 Straight Cymbal Stand

H550 Hi-Hat Stand • P560 BD Pedal

TH675 Tom Holder

AC901 Clamp • TH684 Arm

Cymbals not included.

*Also available with 16x22 Bass Drum
(Model No. MP522SE).*

*hard case for
snare*

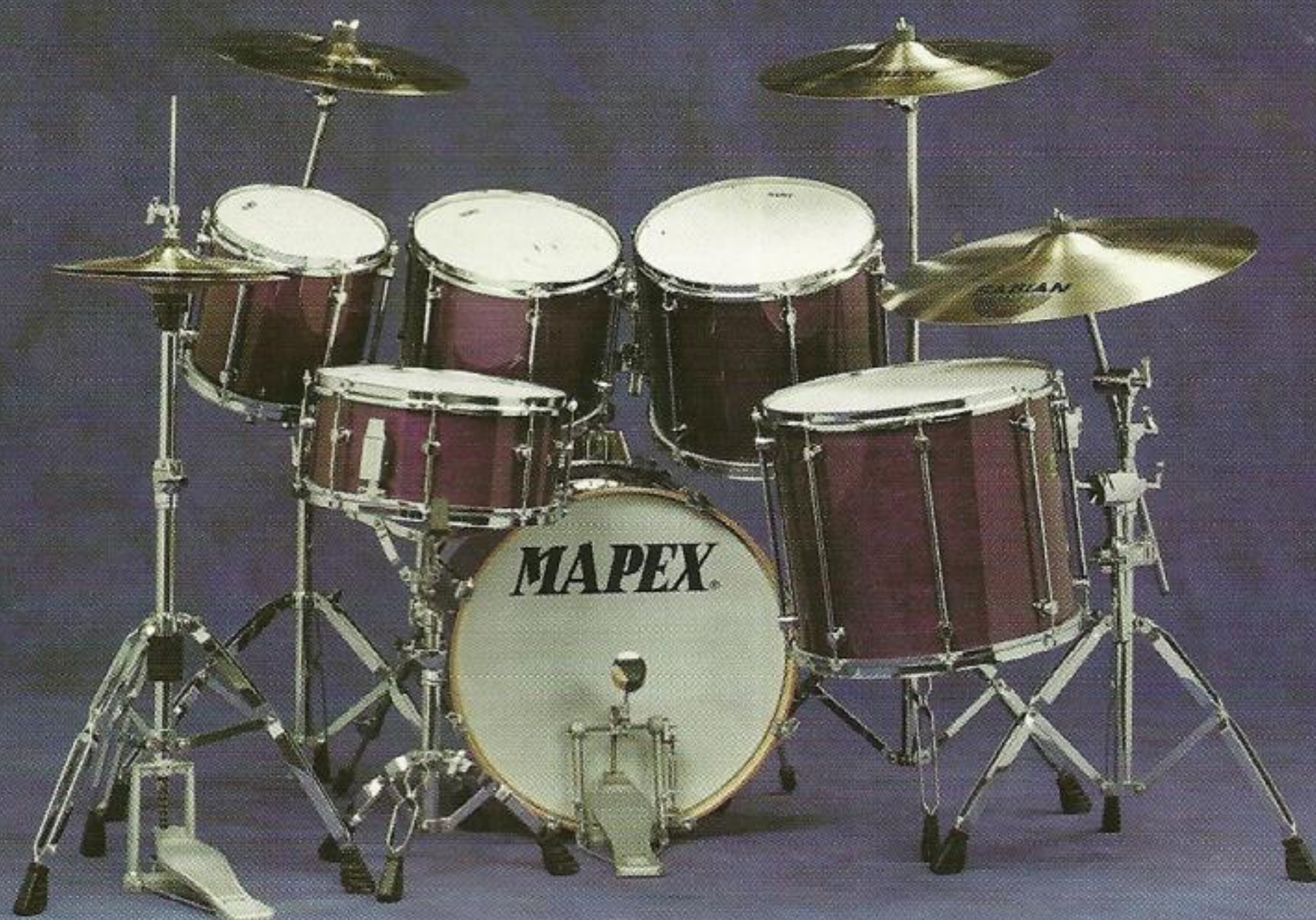
Mars Pro SE • Model No. MP525SE • Transparent Aqua Green

<i>Snare</i>	<i>Bass Drum</i>	<i>Rack Toms</i>	<i>Floor Tom</i>
6.5x14 Wood	16x22	10x12, 11x13	16x16

S550 Snare Stand • C550 Straight Cymbal Stand • H550 Hi-Hat Stand

P560 BD Pedal • TH675 Tom Holder

Cymbals not included.



Mars Pro SE • Model No. MP602SE • Transparent Purple

<i>Snare</i>	<i>Bass Drum</i>	<i>Rack Toms</i>
6.5x14 Wood	16x20	10x10, 10x12, 12x14, 14x16

S550 Snare Stand • C550 Straight Cymbal Stand • B550 Boom Cymbal Stand • H550 Hi-Hat Stand

P560 BD Pedal • TH675 Tom Holder • TS550 Double tom Stand

Shown with AC901 Clamps (x2), TH684 Arms (x2) and additional B550 Boom Cymbal Stand.

Cymbals not included.

Also available with 16x22 Bass Drum (Model No. MP622SE).

MARS SERIES



Mars • Model No. MA622 Transparent Honey Amber

Snare	Bass Drum
6.5x14 Metal	16x22

Rack Toms

10x10, 10x12, 12x14, 14x16

S550 Snare Stand • C550 Straight Cymbal Stand
B550 Boom Cymbal Stand • H550 Hi-Hat Stand
P550 Bass Drum Pedal

TH673 Tom Holder • TS550 Tom Stand
Shown with additional B550 Boom Cymbal Stand.
Cymbals not included.

Also available with 16x20 Bass Drum (Model No. MA602)

Mars • Model No. MA502 Transparent Emerald Green

Snare	Bass Drum
6.5x14 Metal	16x20

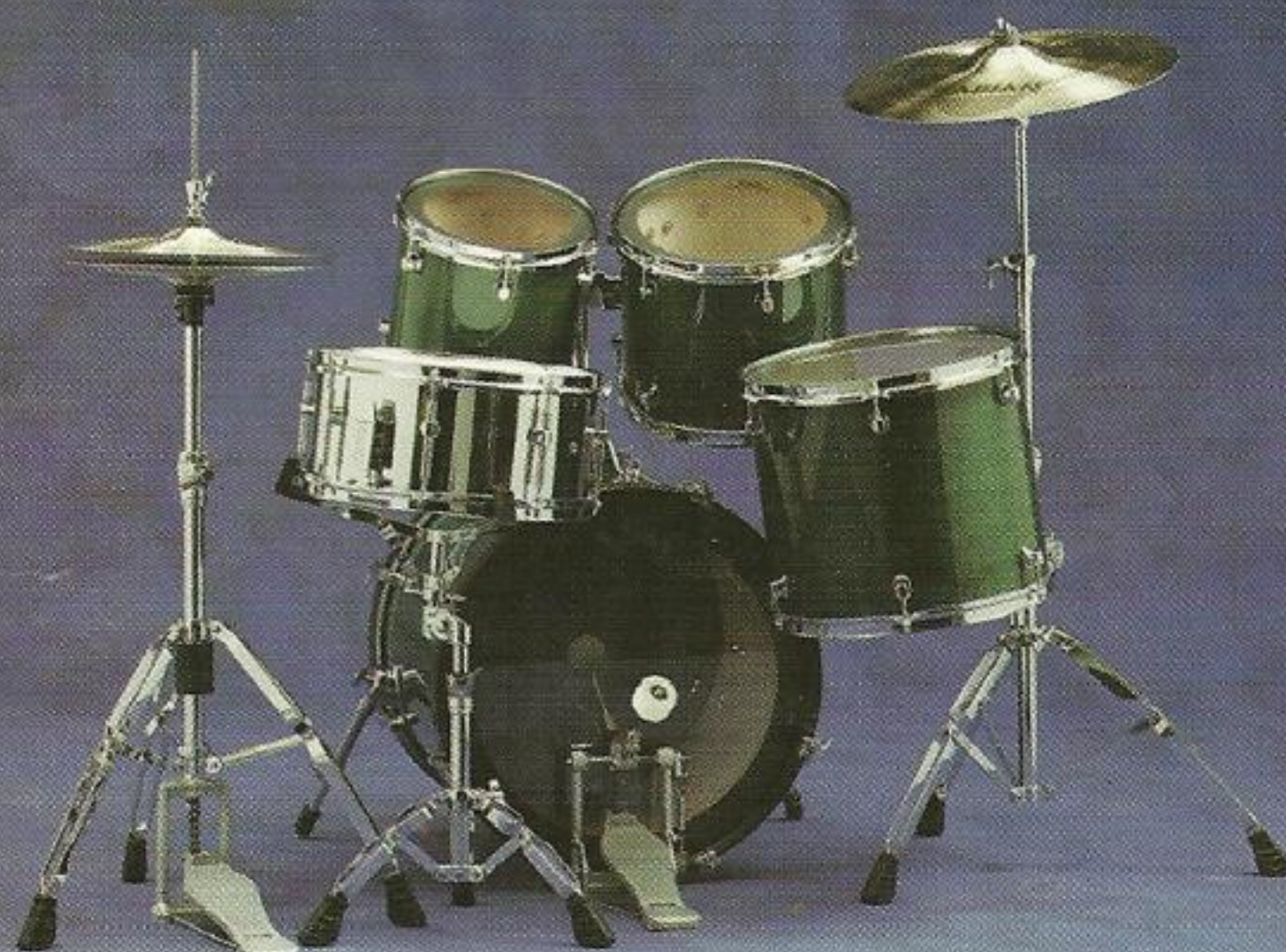
Rack Toms

10x10, 10x12, 12x14

S550 Snare Stand • C550 Straight Cymbal Stand
H550 Hi-Hat Stand • P550 BD Pedal

TH673 Tom Holder • AC901 Clamp • TH684 Arm
Cymbals not included.

Also available with 16x22 Bass Drum (Model No. MA522).



Mars • Model No. MA525 Transparent Walnut

Snare	Bass Drum
6.5x14 Metal	16x22

Rack Toms

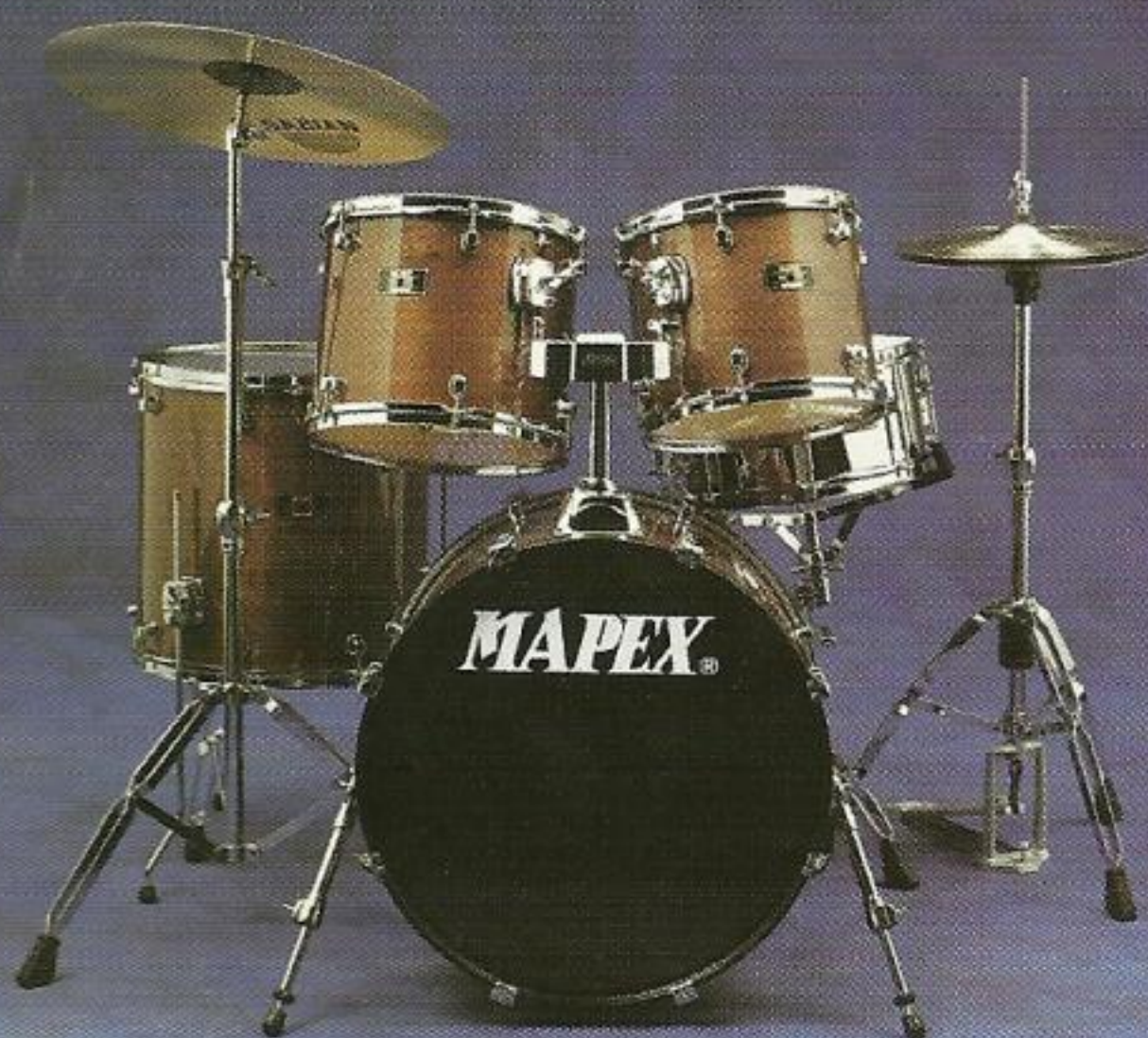
10x12, 11x13

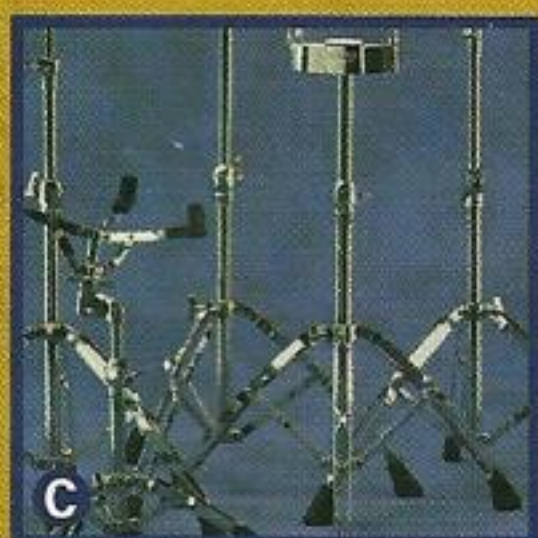
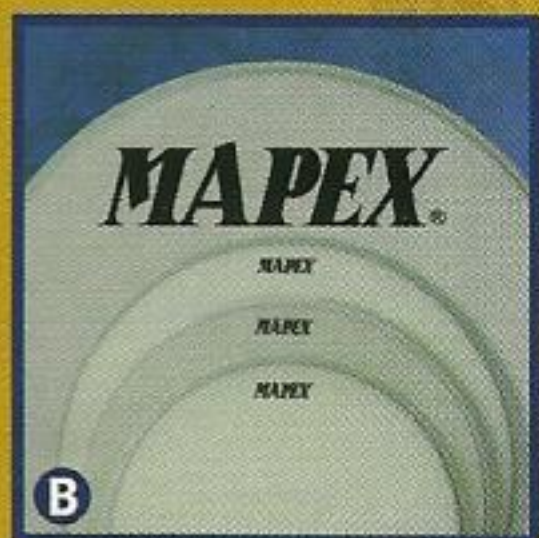
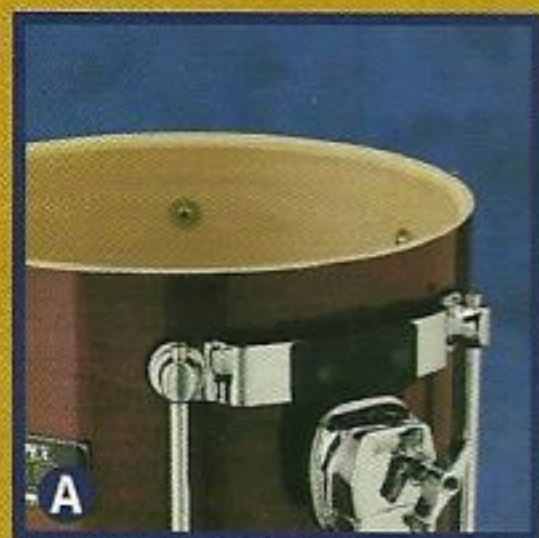
Floor Tom

16x16

S550 Snare Stand • C550 Straight Cymbal Stand
H550 Hi-Hat Stand • P550 Bass Drum Pedal

TH673 Tom Holder
Cymbals not included.





Mars Pro and Mars drums have been created to fill the need for high quality instruments at a midrange price-point. Ideal for intermediate players as well as serious semi-pro's and "weekend warriors", the Mars Pro and Mars Series feature the warmth and clarity of maple-mahogany composite shells along with many of the appearance and performance enhancements found on Mapex Saturn and Orion kits. While Mars Pro and Mars component drums and 350 and 550 hardware are available to create custom configurations, all Mars



drumsets include redesigned 550 Series stands and pedals with Mars Pro packages adding matching wood snare drums, 560 bass drum pedals and I.T.S. (isolated tom system) mounts on both the rack toms and bass drums. Mars Pro drums are further upgraded with genuine Remo Unicorn drumheads. Finally, to compliment their natural sonic beauty, both Mars Pro and Mars are available in a wide choice of luxurious, high-gloss lacquers, with Mars Pro also offered in Wax Cherry Red for a classic, vintage appearance.

Mars Pro and Mars Features

- A** 9-Ply composite shell features mahogany core with hand-selected maple inner and outer plies and a choice of high-gloss lacquer finishes. Mars Pro rack toms also feature I.T.S. isolated tom mount and classic tube-style lugs
- B** Unicorn drumheads by Remo are standard on Mars Pro.
- C** Mars Pro and Mars Drumkits include upgraded 550 Series double-braced hardware with a 2-year limited warranty.
- D** Mars Pro Bass Drums include TH675 I.T.S. isolation-style double tom holder and matching wood BD counterhoops.
- E** Mars Pro wood snares include off-center mounted low-mass lugs.

Mars Pro and Mars drumshells are covered by the Mapex Limited Lifetime Warranty.

Mars Pro & Mars Component Drum Sizes

Snare Drums	Bass Drums	Rack Toms	Floor Toms
6.5x14 (metal)	16x18*	8x8	14x14
6.5x14* (wood)	16x20	8x10*, 10x10	16x16
	16x22, 18x22*	10x12, 12x12*	16x18
	18x24	11x13, 13x13*	
		12x14, 14x14*	
		14x16	

*Available only in Mars Pro Series.

MARS



Mars • PB
Polished
Black



Mars • EG
Transparent
Emerald Green



Mars • LR
Solid
Wine Red



Mars • HA
Transparent
Honey Amber



Mars • TW
Transparent
Walnut

MARS PRO



Mars Pro • AG
Transparent
Aqua Green



Mars Pro • EG
Transparent
Emerald Green



Mars Pro • CY
Transparent
Cherry Red



Mars Pro • MB
Transparent
Midnight Black



Mars Pro • TP
Transparent
Purple



Mars Pro • NB
Transparent
Ocean Blue



Mars Pro • WY
Wax
Cherry Red

Pedals



H950 Hi-Hat Stand Features

A 950 Hi-Hat Clutch*

Steel-To-Steel lever provides secure positioning and unique rubber cymbal washers provides tone control while preventing unwanted loosening of the clutch assembly.

B Angle Adjustable Tri-Nodal Cymbal Seat*

Minimal contact maximizes cymbal resonance.

C Rotating Leg Assembly

Allows closer positioning of footboards in multi pedal set-ups.

D 10-Stop Spring Tension Adjustment

Incremental, positive tension adjustment.

E True Direct-Pull Drive System*

Maintains vertical motion for greater speed, accuracy and control.

F Footboard Adjustment

Adjusts footboard angle and position for increased playing comfort.

G Footboard Connector Rod

Footboard folds up for greater portability.

*Patent Pending

H950 Hi-Hat Stand

P950 & P980 Bass Drum Pedal Features

H 950 Tri-Tonal Beater

Maple, Felt and Plastic provide a variety of sounds and feels.

I Variable Position Cam & Chain Drive*

Drumkey adjustment varies position of cam for custom control of power, accuracy and sensitivity.

J Beater Rod Balance/Memory Lock*

Adjusts balance and recalls beater position.

K Stroke Adjustment & Stabilizer Bearing

Adjusts balance and recalls beater position.

L Spring Tension Lock*

Non-slip feature makes adjustment easier and more reliable.

M Floating Bass Drum Hoop Clamp

(U.S. Patent No. 5641924) Allows faster, more secure clamping.

N Pedal Adjustment Key & Holder

All major adjustments can be made with attached standard drumkey.

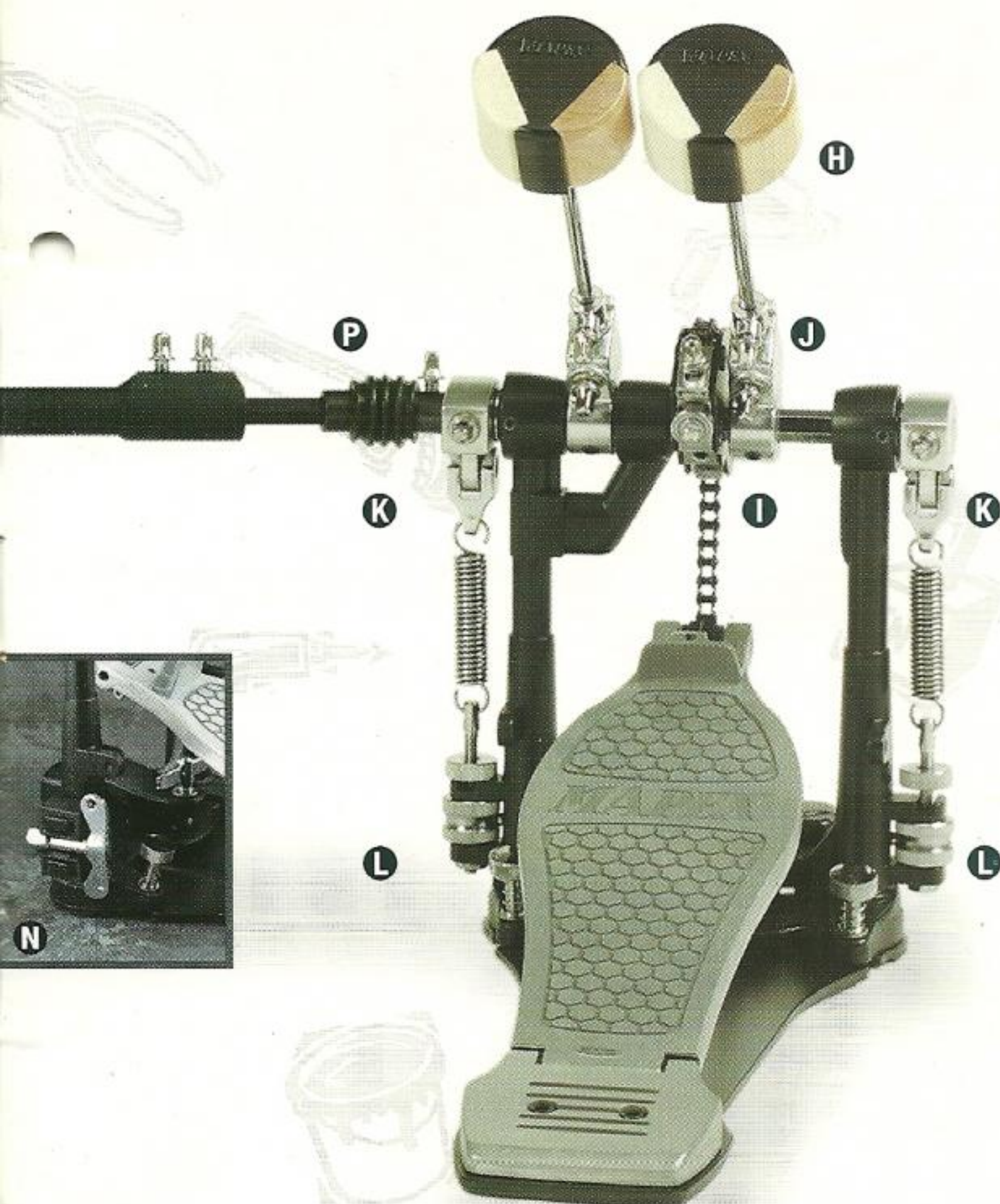
O Steel Pedal Plates

Increased strength and stability plus adjustable built-in spurs and rubber tread.

P Dual Universal Linkage*

(P980 Double Pedal)

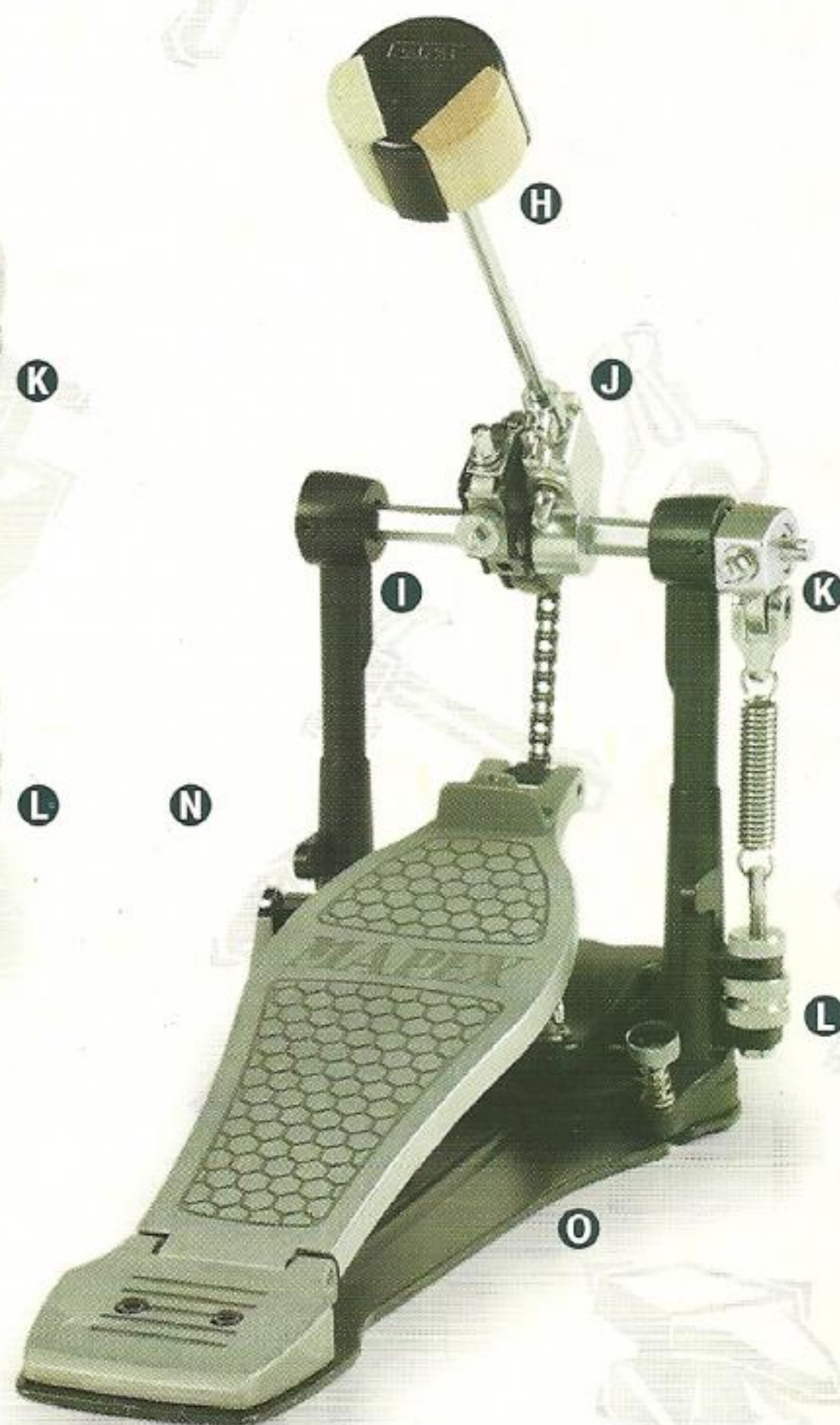
Rubber covering protects U-Joints from dust and dirt while adjustable hexshaft features internal retaining mechanism to prevent pull out.



P980 Double Bass Drum Pedal

The newly designed 950 "Performing Artist" Series Bass Drum Pedals and Hi-Hat Stands represent a new generation of pedals for the next generation of drummers. The P950 Single Bass Drum Pedal, P980 Double Bass Drum Pedal and H950 Hi-Hat Stand are strong without being overly bulky, fast without sacrificing accuracy and adjustable without a lot of unnecessary bells and whistles. Their innovation, quality and value reflect the Mapex commitment to developing a complete line of drums, pedals, hardware and accessories that help raise the level of drumming—not the cost.

Not shown: P550 (Same as P560 with solid felt beater).



P950 Single Bass Drum Pedal



P560
BD Pedal

P200V
BD Pedal



H550
Hi-Hat Stand

H350
Hi-Hat Stand

H200V
Hi-Hat Stand

Hardware



B360	S350	C350	B350
Weighted Boom Cymbal Stand	Snare Drum Stand	Straight Cymbal Stand	Boom Cymbal Stand

350 Series Lightweight Drum Stands

Mapex 350 Series stands feature Steel-to-Steel clamping security and the reduced weight of single-braced legs.



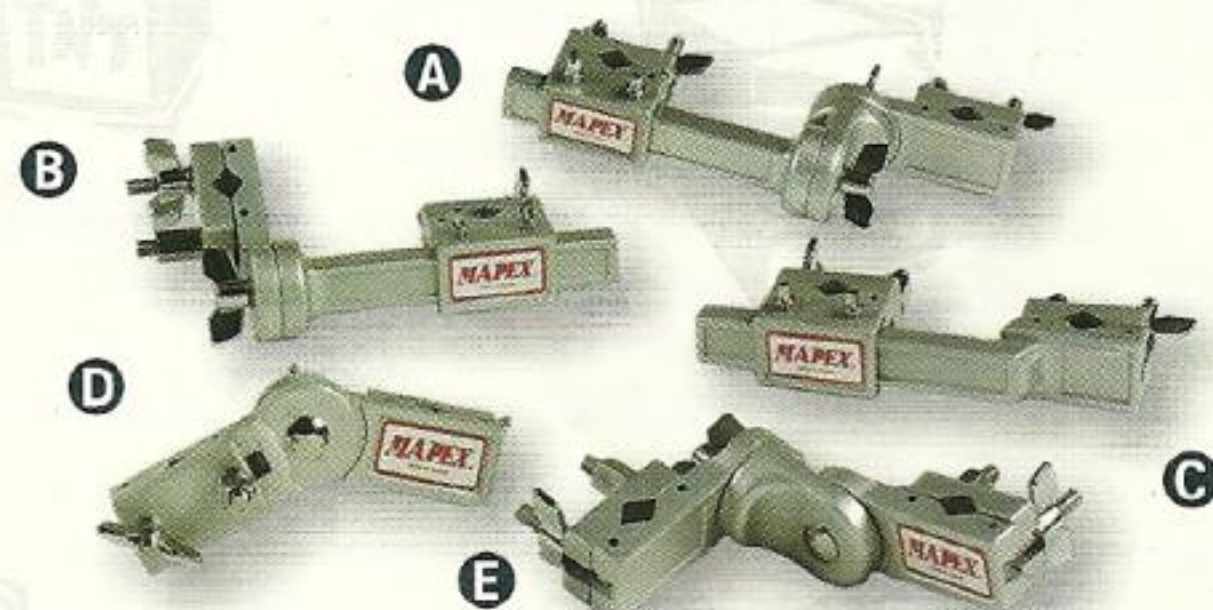
B550	S550	C550	TS550	B560
Boom Cymbal Stand	Snare Drum Stand	Straight Cymbal Stand	Double Tom Stand	Weighted Boom Cymbal Stand

550 Series Middleweight Drum Stands

Upgraded 550 Series stands include Steel-to-Steel clamps, lower tube memory locks and sturdy, double-braced legs.

Accessory Clamps

- A AC903** Double Angle Adjustable Multi-Clamp with Variable Position Clamp
- B AC905** Single Angle Adjustable Multi-Clamp with Variable Position Clamp
- C AC901** Straight Multi-Clamp with Variable Position Clamp
- D AC904** Center Angle Adjustable Multi-Clamp
- E AC902** 90° Double Angle Adjustable Multi-Clamp



Drummer's Thrones



F T710
motorcycle/vinyl
double-braced
threaded
seat
legs
height adj.



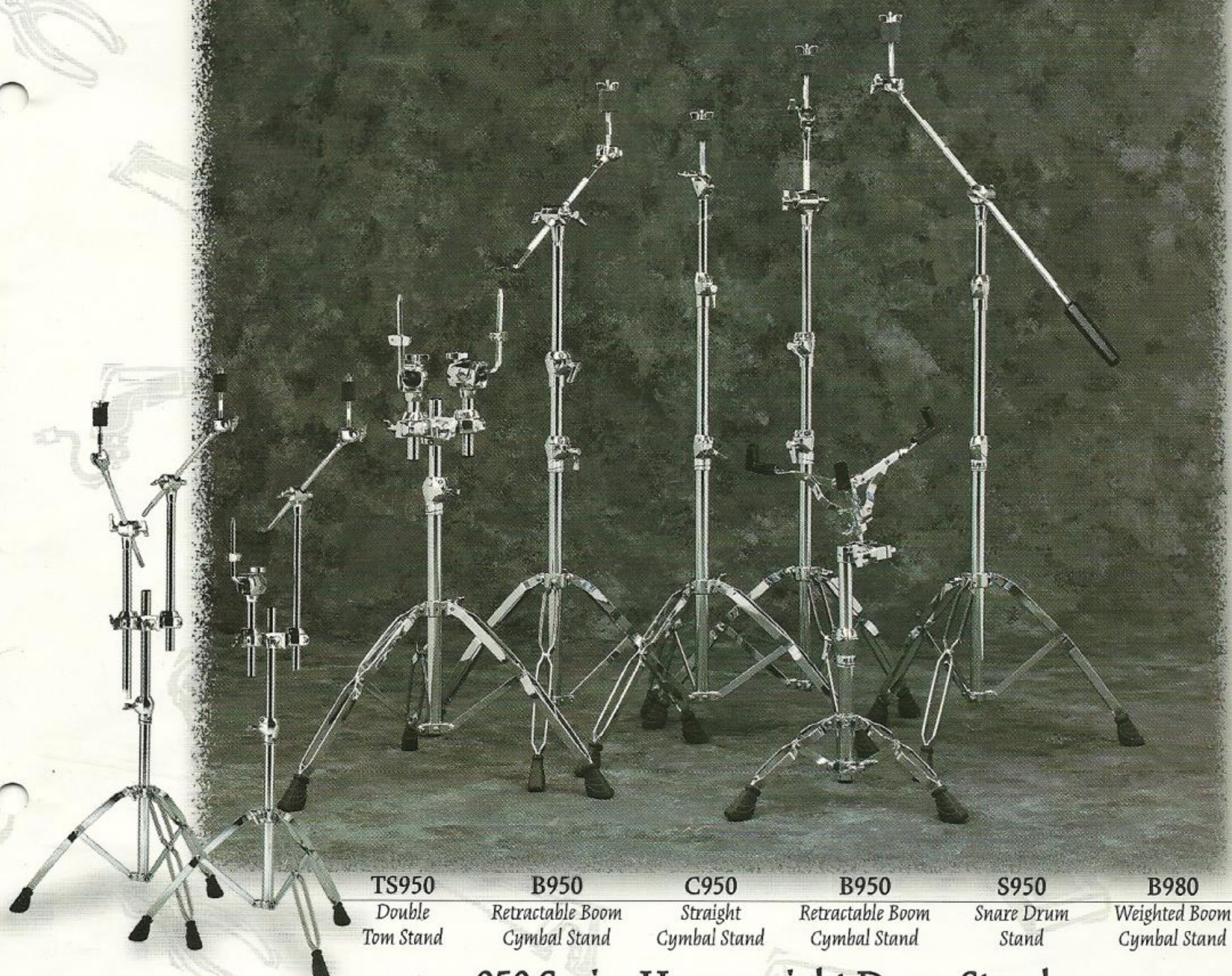
G T720
round/cloth
double-braced
threaded

H T700
round/vinyl
double-braced
threaded

I T560
round/vinyl
double-braced
threaded

J T550
round/vinyl
double-braced
non-threaded

K T350
round/vinyl
single-braced
non-threaded



TS950
Double
Tom Stand

B950
Retractable Boom
Cymbal Stand

C950
Straight
Cymbal Stand

B950
Retractable Boom
Cymbal Stand

S950
Snare Drum
Stand

B980
Weighted Boom
Cymbal Stand

950 Series Heavyweight Drum Stands

Mapex's new, heavy-duty 950 "Performing Artist" Series offers a full-line of tough, dependable stands with the refinements touring and studio drummers demand. High-grade steel levers tighten into recessed steel nuts in all tube receiver and tripod adjustment castings. Nylon receiver insert sleeves allow smoother telescoping and

rattle prevention. Memory locks are standard at all height adjustments. In addition, the S950 Snare Stand can go extremely low while the versatile TS950 Double Tom Stands (inset) feature an exclusive height and rotation adjustable arm receiver that accommodates a variety of Cymbal, Hi-Hat and Accessory Arms.

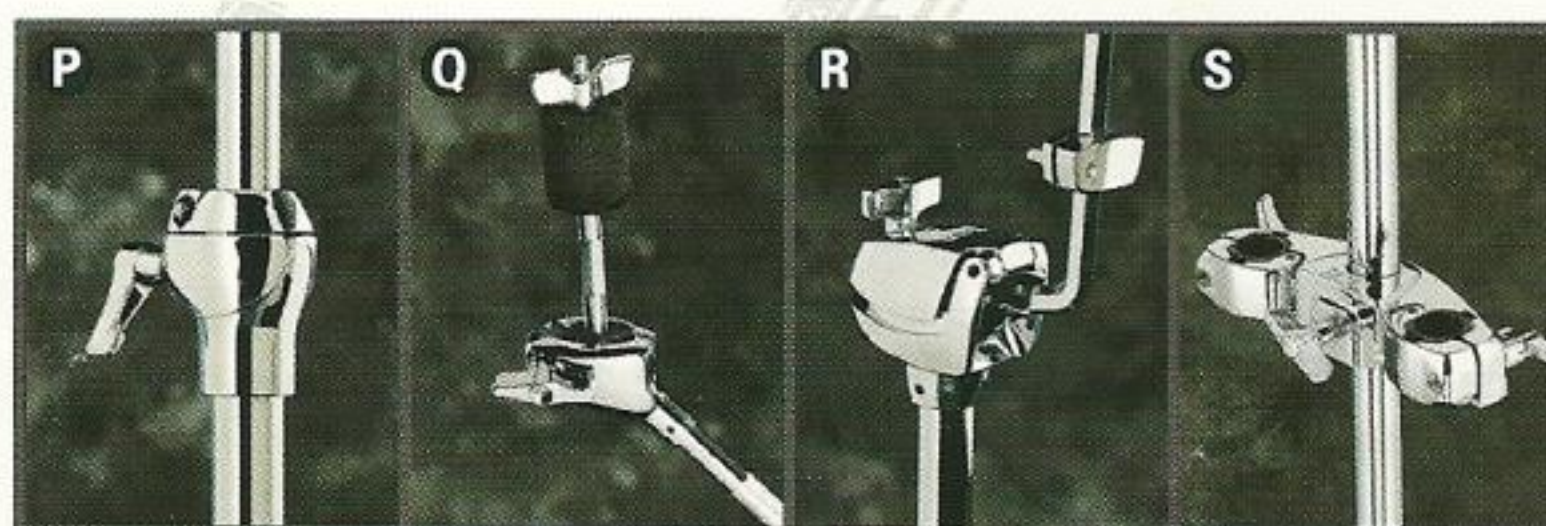


P Steel-To-Steel Lever & Streamlined Memory Lock

Q Ball-In-Socket Cymbal Tilter

R Ball-In-Socket Tom-Tom Arm

S TS950 Arm Receiver



Accessory Arms

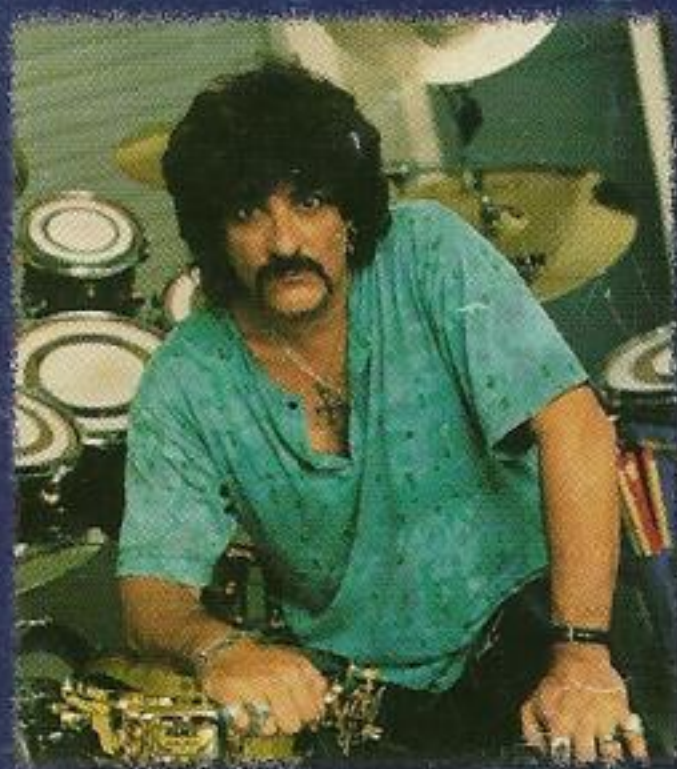
L B78 Weighted Boom Cymbal Arm

N TH684 Single Tom Arm

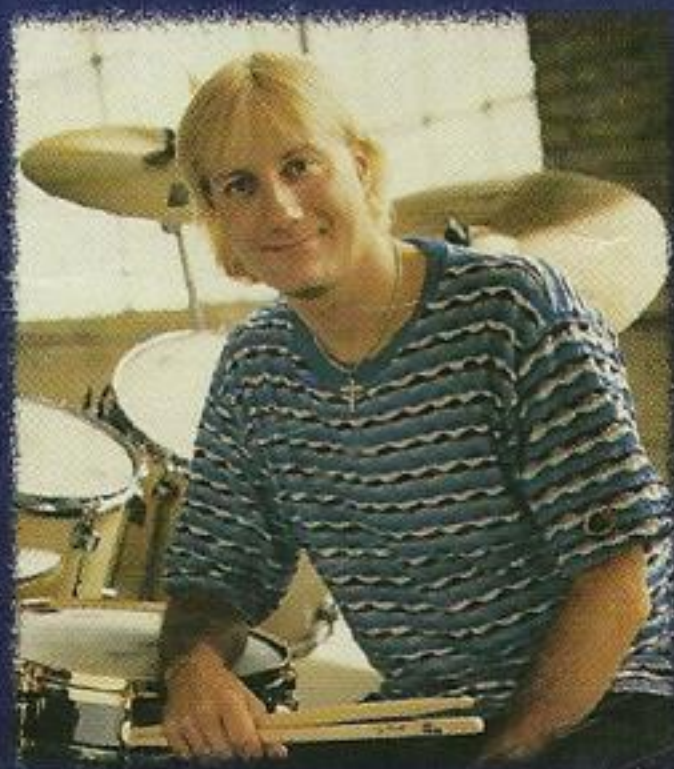
M CH71 Adjustable Auxiliary Hi-Hat Arm

O B75 Retractable Boom Cymbal Arm

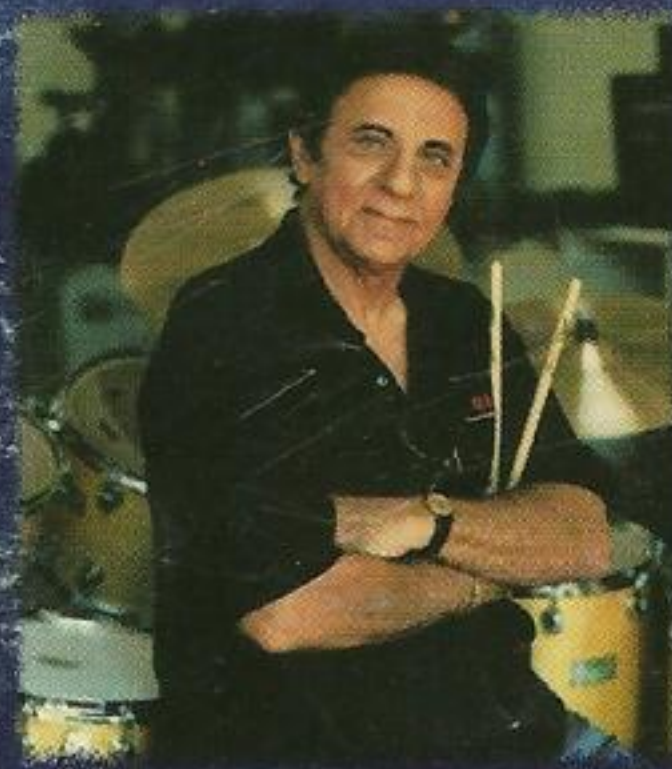
Mapex Drum Artists



Carmine Appice
(independent)



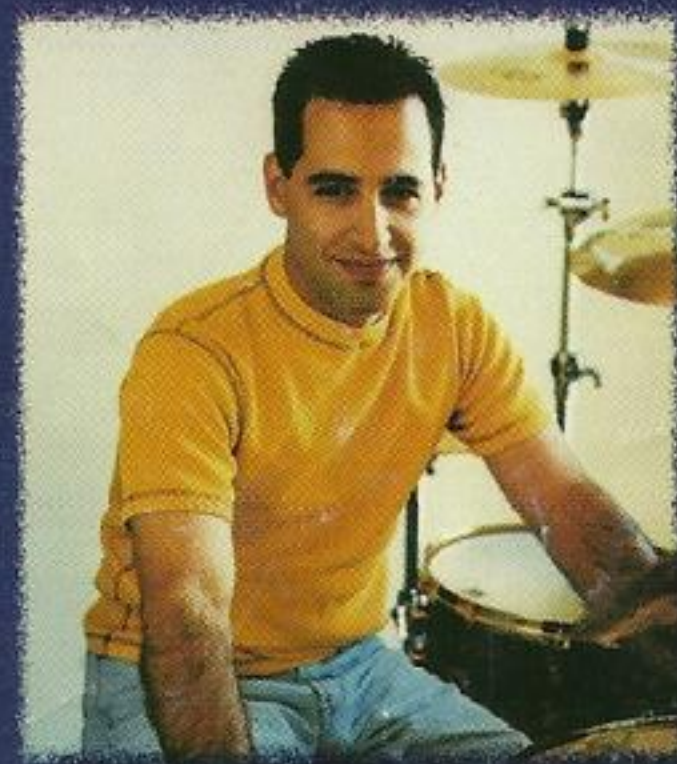
Gregg Bissonette
(independent)



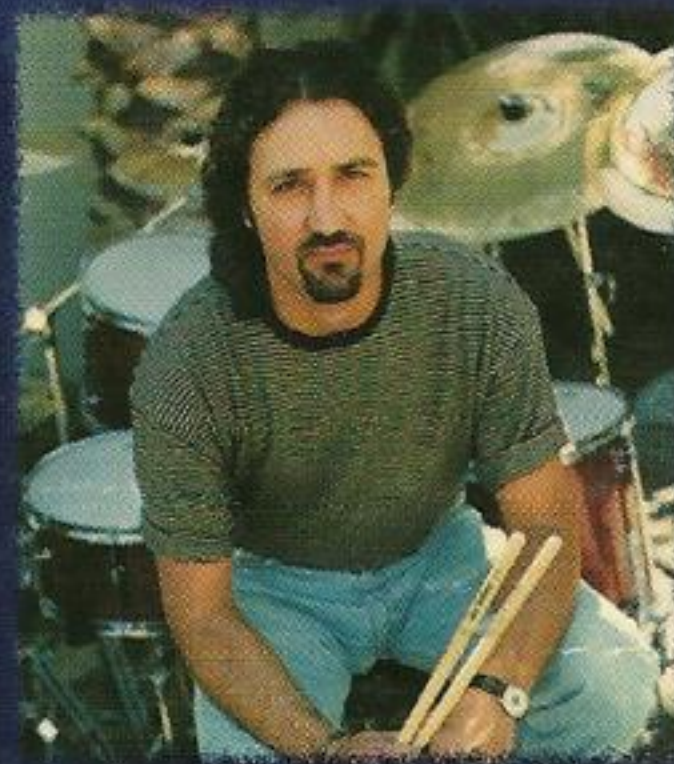
Hal Blaine
(LA studio)



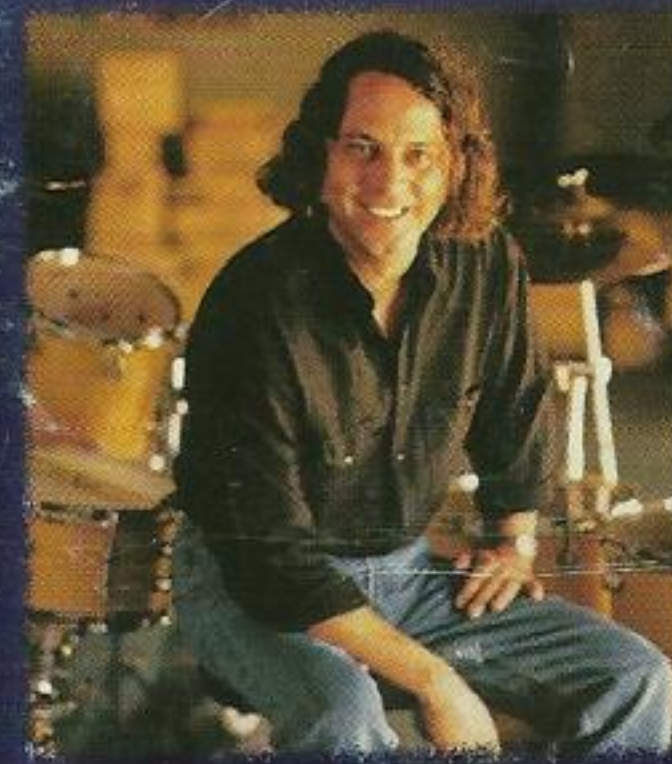
Monty Booker
(Bryan White)



Nick D'Virgilio
(Tears For Fears)



Julio Figueroa
(independent)



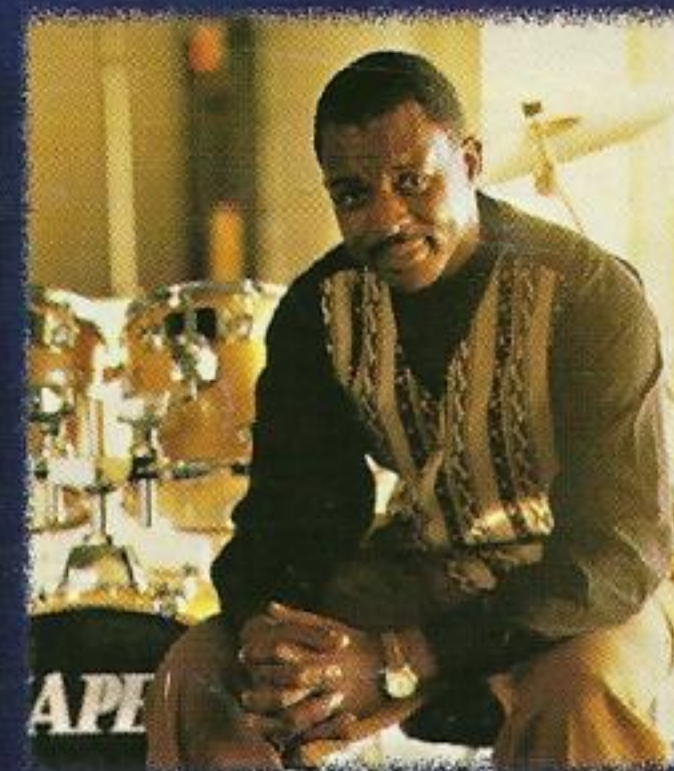
Jeff Hale
(Waylon Jennings)



David Lauser
(Sammy Hagar)



Walfredo Reyes, Jr.
(Steve Winwood)



Herlin Riley
(Wynton Marsalis)



Tom Roady
(Nashville studio)



Raymond Weber
(Harry Connick, Jr.)

Additional Mapex Drum Artists (not shown): Jeff Ausdemore (Nouveaux), Brock Avery (Joykiller), Darren Fair (Terri Clark), Spanky G (The Bloodhound Gang), Bobby Huff (Blackhawk), Lynn Massey (Neal McCoy), Morgan Rose (Sevendust) and John Stacy (Mark Chestnut).

Mapex USA
PO Box 1360
LaVergne, TN 37086-1360 • USA
e-mail: mapex@concentric.net

www.khs-musix.com
Check the Internet for more information
on Mapex products and artists.
#MCAT1/98 © 1997 Mapex USA