



www.mapexdrums.com

©Copyright 2004 Printed in Taiwan



Pro *M* ^{All Maple}
Series
M Series



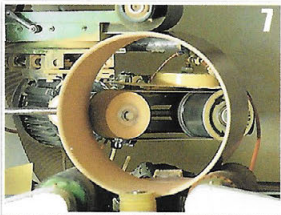
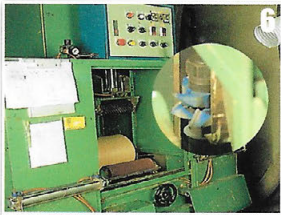
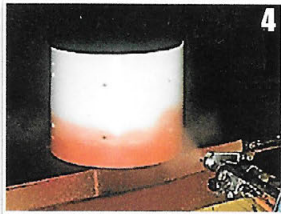
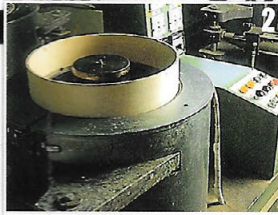
the subtleties of



MAPEX® leads 21st century drum manufacturing with the marriage of our latest computer assembly process and classic hand finishing, continuing our commitment to advance the technology and art of drumming. The All-Maple Pro M series consists of 100% select thin maple plies, first-generation metals and alloys, custom formulated lacquer finishes and high gloss transparent finishes. From the advanced shell isolation features of the new All-Maple Pro M series to the enhanced value of the V series packages, Mapex adheres to the quality standards set by our Orion and Saturn ranges. The resulting musical instruments will meet the performance and durability demands of any studio or live environment. We invite you to review the Pro M drumsets and drums in this leaflet, to complete your own musical expression your own voice.

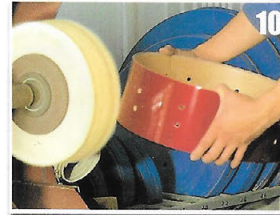
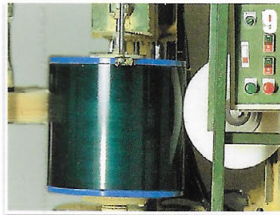
The manufacturing advantage is what gives Mapex its ability to maintain superior quality control, and allows the company flexibility to shape and reposition its product offering quickly to satisfy customer and marketplace needs. Mapex wholly owned manufacturing facility in China, is the only factory in the world building Mapex products. One of the world's largest producers of musical instruments.

Today, the Mapex plant just received a shiny new ISO 9000 certification - the world's benchmark for manufacturing excellence.



MAPEX ISO 9000 certificated manufacturing process:

- 1) The new All-Maple Pro M series is manufactured from laminates of 100% select thin Maple.
- 2) The selected laminate plies are molded to a perfectly circular form using the best computer-monitored heat and pressure settings.
- 3) After rigorous inspection, shells are then hand-selected for each of the vast range of hand-applied and computer-controlled finishes.
- 4) Our new stunning finishes combine hand-applied base coats and computer-controlled 'burst' sprays to create unique works of art - followed by hand finishing and polishing to an immaculate shine.
- 5) Lacquered shells are cured in Mapex' own microwave oven-also computer-controlled for a perfect final appearance.
- 6) Consistent and accurate bearing edges are cut with computer directed, mechanical lathes. These edges are finished with our unique bearing edge polishing rigs, and our special hand buffing and bearing edge treatment.
- 7-8) Each shell is completed with a high speed application of Jeweller Rouge, and special hand polishing wheels bring out the highlights in the hardened finishes.
- 9-10) The final assembly is performed by our skilled craftsmen - tuning, final adjustment, drum assembly and packing.
- 11) Our drums are carefully packed for transit using the best materials to absorb shocks and make sure they arrive in perfect condition for your pleasure, your musical expression - and for your own voice!



Pro M series



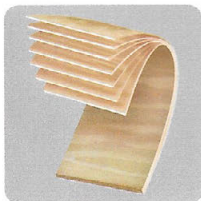
Pro M Series

All Maple

Mapex "Pro M" drums have been created to provide professional "road-worthy" instruments at a mid-range price point. The thin 6.1mm Maple 7-ply shells, generate a focused, studio-proven sound, tuning range and resonance. The

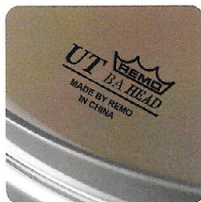
drum sound integrity is ensured with our I.T.S. (Isolated Tom System™), non-penetrating bass drum double tom holder and the Mapex exclusive spring-loaded floor tom legs.

The Pro M drum sets are accompanied with sturdy 550 series hardware and 750 series bass drum pedal and hi hat stands. In addition to several drumset configurations, the Pro M series includes a wide range of available component pieces in hand-rubbed lacquer finishes, including MAPEX' pecially formulated , Fade and gloss transparent finishes.



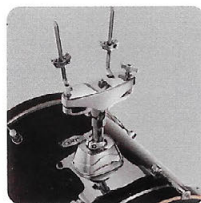
7-ply 6.1mm All Maple Shells

Traditional warmth, presence and tuning range along with an uncommon balance of focus and resonance.



REMO® Drumheads

Mapex Pro M features REMO® drum heads. Bass drums feature self-muting clear (batter) and ebony (resonant) heads, toms clear single ply heads and snare drum features coated REMO® batter head.



I.T.S. Isolated Double Tom/Bass Drum Holder

The non-penetrating Pro M base plate is set 15mm above the bass drum to allow the bass drum shell provide a highly focused, full-shell bass drum sound. The two-part external tom shaft provides for a wide range of tom height adjustment.



Maple Finished Bass Drum Hoops

Low frequency biased, wood bass drum hoops feature a color matched outer finish and clear natural inner finish.



Non-obtrusive Bass Drum Claw Hooks

Housed in sturdy finely curved claw hook housings, the drum-key tuning rods with nylon washers provide accurate smooth tuning.



I.T.S. Isolated Tom System™

Mapex's exclusive off-shell tom mounting system provides stability without stopping all important shell resonance that contributes to the toms full projection sound.



P750 Bass Drum Pedal

All Pro M drum sets include this sleek designed pedal featuring adjustable beater positioning, Mapex Tri-tonal beater and patented floating bass drum hoop clamp.



Heavy-Duty Telescoping Spurs

Non-penetrating spurs prevent bass drum 'creep' with extensive height and angle adjustment. Spur end can be adjusted from rubber foot to sharp steel tip providing non-slip security on floor surfaces.

*the subtleties of
studio*

Pro M series



22x18
8x8 10x9 12x10
14x5.5
14x12
16x16F
18x16F

STUDIO 8-PIECE DRUMSET Caramel Fade

| | | | |
|--------|------------|--------|-----------------|
| 22X18 | Bass Drum | H750 | Hi-Hat Stand |
| 8X8 | Rack Tom | B550*2 | Boom Stand |
| 10X9 | Rack Tom | C550 | Cymbal Stand |
| 12X10 | Rack Tom | S550 | Snare Stand |
| 14X12 | Rack Tom | P750 | Pedal |
| 14X5.5 | Snare Drum | TS960 | Multi-Use Stand |
| 16X16 | Floor Tom | AC901 | Clamp |
| 18X16 | Floor Tom | TH684 | Single Tom Arm |

the abuse of gigging

20x16

10x9

12x10

14x5.5

14x14F

FUSION PM5045MB

Transparent Midnight Black

| | | | |
|--------|------------|------|--------------|
| 20X16 | Bass Drum | H750 | Hi-Hat Stand |
| 10X9 | Rack Tom | B550 | Boom Stand |
| 12X10 | Rack Tom | C550 | Cymbal Stand |
| 14X14 | Floor Tom | S550 | Snare Stand |
| 14X5.5 | Snare Drum | P750 | Pedal |



22x18

10x9

12x10

14x5.5

14x12

FUSION PM5225NL

Glossy Natural

| | | | |
|--------|------------|------|--------------|
| 22X18 | Bass Drum | H750 | Hi-Hat Stand |
| 10X9 | Rack Tom | B550 | Boom Stand |
| 12X10 | Rack Tom | C550 | Cymbal Stand |
| 14X12 | Rack Tom | S550 | Snare Stand |
| 14X5.5 | Snare Drum | P750 | Pedal |

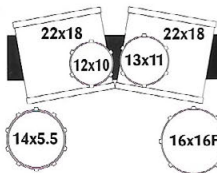
(Shown w/additional Boom Stand B550*2)



Pro M series



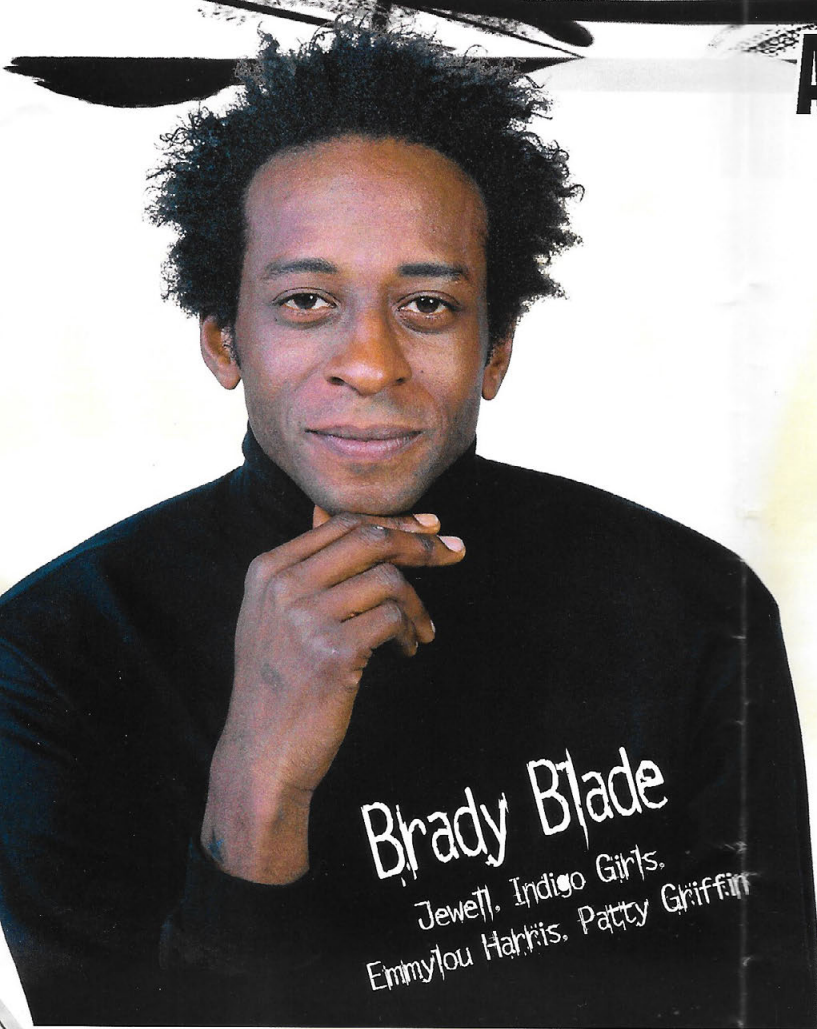
ProM All Maple
Series



ROCK PM6285DCY Transparent Cherry Red

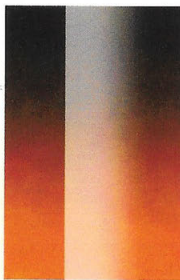
| | | | |
|---------|------------|--------|--------------|
| 22X18"2 | Bass Drum | H750 | Hi-Hat Stand |
| 12X10 | Rack Tom | B550"2 | Boom Stand |
| 13X11 | Rack Tom | S550 | Snare Stand |
| 16X16 | Floor Tom | P750 | Pedal |
| 14X5.5 | Snare Drum | TS550 | Tom Stand |

AVAILABLE COLORS

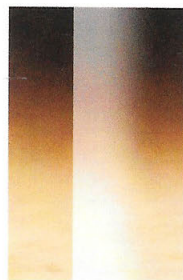


Brady Blade
 Jewell, Indigo Girls,
 Emmylou Harris, Patty Griffin

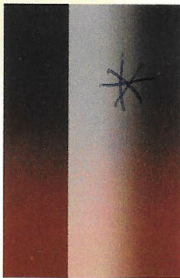
"I need a kit that stands up to the abuse of gigging night after night, and can still handle the subtleties of studio sessions."



RF
Cherry Fade



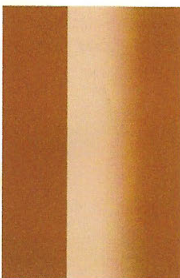
YL
Caramel Fade



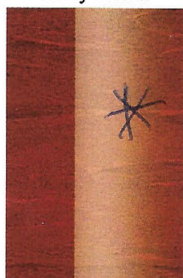
TF
Tobacco Fade



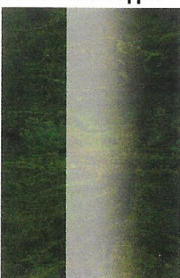
NL
Glossy Natural



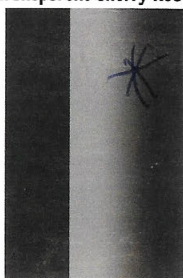
KC
Benchmark Copper



CY
Transparent Cherry Red



EG
Transparent Emerald Green



MB
Transparent Midnight Black

Pro M series

HARDWARE



Patented Hi-Hat Clutch & Tri-Nodal Cymbal Seat

Hi-Hat cymbals are secured within the grasp of Mapex's OS Cymbal Accentuators™ that enhances cymbal sustain, yet will not shred or compact into a hard surface. The angle adjustable Tri-Nodal cymbal seat provides maximum angel control with minimal contact to the bottom cymbal itself.
US Patent 5918300.



Mapex Designed Castings & Slip-Proof Nylon Sleeves

Secure the stand height within slip-proof nylon sleeves designed into the chrome castings, featuring the high-grade steel wing-bolts that tighten into recessed steel nuts.



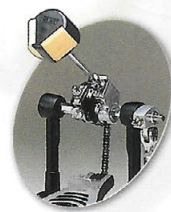
OS Cymbal Accentuator™

Enhance the sustain of the cymbal through minimal contact, offer more protection from the wing-nut on top of the cymbal itself and will not compress or shred like traditional felt washers.



10-Stop Spring Tension Adjustment

Incremental, positive tension adjustment for the individual's needs and playing style.
US Patent 4977810.



Tri-Tonal Beater

Maple, felt and plastic provide a variety of sounds and feel.

The Pro M series features the advanced 750 series pedals and hi-hat stands and durable 550 series double-braced stands that secure stand height with slip-proof nylon sleeves within chrome castings featuring high-grade steel wing screws that secure into recessed steel nuts.

Hi-Hat Stand H750

- Patented HH clutch and Tri-Nodal cymbal seat
- Rotating single-braced heavy-weight legs
- 10-stop wide range spring tension adjustment

Pedal P750

- Tri-tonal beater- Maple, Felt and Plastic
- Patented floating bass drum hoop clamp
- Sturdy steel footboard plate
- Rolling power drive cam and chain drive

Boom Stand B550 & Cymbal Stand C550

- OS Cymbal Accentuator™
- Steel-to-steel clamps with nylon inserts
- Multi-Tooth ratch
- Memory locks on lower castings

Snare Stand S550

- 18-Tooth ratch gear tilter
- Memory locks on castings
- Solid double-braced, middle weight tubing



the subtleties of studio

Available Models

| | PM5225 | PM5255 | PM5466 | PM6225 | PM5045 | PM6285D |
|---------------------|--------|--------|--------|--------|--------|---------|
| Bass Drum | 22x18 | 22x18 | 24x18 | 22x18 | 20x16 | 22x18*2 |
| Rack Tom | 10x9 | 12x10 | 13x11 | 10x9 | 10x9 | 12X10 |
| | 12x10 | 13x11 | | 12x10 | 12x10 | 13X11 |
| | 14x12 | | | 14x12 | | |
| | | | | 16x14 | | |
| Floor Tom | | 16x16 | 16x16 | | 14x14 | 16X16 |
| Snare Drum | 14x5.5 | 14x5.5 | 14x6.5 | 14x5.5 | 14x5.5 | 14x5.5 |
| Snare Stand | S550 | S550 | S550 | S550 | S550 | S550 |
| Hi-Hat Stand | H750 | H750 | H750 | H750 | H750 | H750 |
| Cymbal Stand | C550 | C550 | | C550 | C550 | |
| Boom Stand | B550 | B550 | B550*2 | B550 | B550 | B550*2 |
| Pedal | P750 | P750 | P750 | P750 | P750 | P750 |
| Tom Stand | | | | | | TS550 |

Components

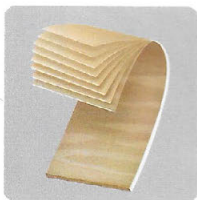
| | | | | | |
|-----------|---------|----------|------------|----------|----------|
| Bass Drum | 18"X14" | PMB1814N | | 8"X8" | PMT808N |
| | 20"X16" | PMB2016N | | 12"X9" | PMT1209N |
| | 20"X18" | PMB2018N | | 12"X10" | PMT1210N |
| | 22"X18" | PMB2218N | | 13"X11" | PMT1311N |
| | 24"X18" | PMB2418N | | 14"X7" | PMT1407N |
| Floor Tom | 14"X14" | PMF1414N | | 14"X12" | PMT1412N |
| | 16"X16" | PMF1616N | | 16"X8" | PMT1608N |
| | 18"X16" | PMF1816N | | 16"X14" | PMT1614N |
| Tom Tom | 10"X5" | PMT1005N | | 8"X4" | PMT804N |
| | 10"X8 | PMT1008N | Snare Drum | 13"X5" | PMS3506N |
| | 10"X9" | PMT1009N | | 14"X5.5" | PMS4556N |
| | 12"X6" | PMT1206N | | 14"X6.5" | PMS4656N |
| | 12"X8" | PMT1208N | | | |

Pro M series



M Series

MAPEX "M Series" drums feature 8-ply, 8.1mm Maple/Basswood drum shells. The interior 7-ply basswood shell is a hardwood that has been used extensively in the manufacture of musical instruments due to its inherent tonal properties and relative affordability. Basswood, similar to birch in both appearance and timbre, accentuates upper frequency response with additional boost to the lower midrange areas. The result is a tightly grained, full-bodied yet relatively lightweight material that blends perfectly with other hardwoods providing enhanced depth, attack and projection. The outside maple ply further enhances tonal projection as well as providing an excellent base for the high gloss lacquer finish.



Maple / Basswood Shell

8 ply, 8.1mm, North American maple and basswood shells blend strength beauty with a wide tuning range to provide enhanced depth, attack and projection.



REMO® Drumheads

REMO® designed Mapex drum heads on snare drums and toms. Bass drum heads are self-muting with thin Mylar™ underlay behind the body of the head.



Maple/Basswood Bass Drum Hoops

Natural lacquered wood hoops enhance the bass frequency of the drum, without the brittleness associated with plastic or metal bass drum hoops.



I.T.S. Isolated Tom System™

Mapex I.T.S. system enhances the drum's resonance and projection by eliminating the tom bracket to drum shell contact, allowing full, active shell motion.



Maple/Basswood Snare Drum

The internal Basswood plys contribute vast dynamic characteristics at a wide tuning range. REMO® heads and smooth throw-off complete the package. Finished with a color matched outer ply of North American maple.



Ball Adjustment Tom Holder

The Mapex hemisphere tilter allows fully independent tom positioning for incredible versatility and player comfort.



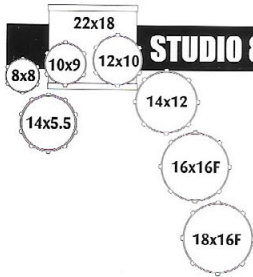
Telescoping Bass Drum Spurs

Allows wide range of bass drum height adjustment, retractable rubber over steel tip provides non-slip security on floor surface.

the subtleties of
studio



M
Series



STUDIO 8-PIECE DRUMSET Transparent Cherry Red

| | | | |
|--------|------------|--------|----------------|
| 22X18 | Bass Drum | H550 | Hi-Hat Stand |
| 8X8 | Rack Tom | B550*3 | Boom Stand |
| 10X9 | Rack Tom | C550 | Cymbal Stand |
| 12X10 | Rack Tom | S550 | Snare Stand |
| 14X12 | Rack Tom | P550 | Pedal |
| 14X5.5 | Snare Drum | TS550 | Tom Stand |
| 16X16 | Floor Tom | AC901 | Clamp |
| 18X16 | Floor Tom | TH684 | Single Tom Arm |

22x18
12x10 13x11
STANDARD M5255UG Mustard Green

- 14x5.5 16x16F
- | | |
|--------|--------------|
| 22X18 | Bass Drum |
| 12X10 | Rack Tom |
| 13X11 | Rack Tom |
| 16X16 | Floor Tom |
| 14X5.5 | Snare Drum |
| H550 | Hi-Hat Stand |
| B550 | Boom Stand |
| C550 | Cymbal Stand |
| S550 | Snare Stand |
| P550 | Pedal |



22x18
10x9 12x10
STUDIO M6225NL Glossy Natural

- 14x5.5 14x12 16x14
- | | |
|--------|--------------|
| 22X18 | Bass Drum |
| 10X9 | Rack Tom |
| 12X10 | Rack Tom |
| 14X12 | Rack Tom |
| 16X14 | Rack Tom |
| 14X5.5 | Snare Drum |
| H550 | Hi-Hat Stand |
| B550 | Boom Stand |
| C550 | Cymbal Stand |
| S550 | Snare Stand |
| P550 | Pedal |
| TS550 | Tom Stand |

the subtleties of Studio

STUDIO 7-PIECE DRUMSET Benchmark Copper

22x18
10x9 12x10 13x11
14x5.5

16x16F

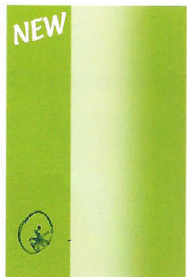
18x16F

- 22X18 Bass Drum
- 10X9 Rack Tom
- 12X10 Rack Tom
- 13X11 Rack Tom
- 16X16 Floor Tom
- 18X16 Floor Tom
- 14X5.5 Snare Drum
- H550 Hi-Hat Stand
- B550*2 Boom Stand
- C550 Cymbal Stand
- S550 Snare Stand
- P550 Pedal
- AC901 Clamp
- TH684 Single Tom Arm



M Series

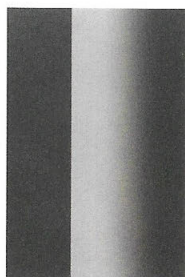
AVAILABLE COLORS



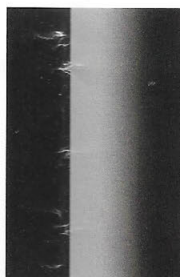
UG
Mustard Green



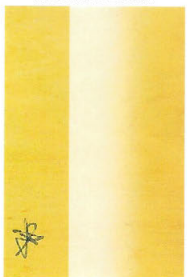
KC
Benchmark Copper



IE
Iron Grey



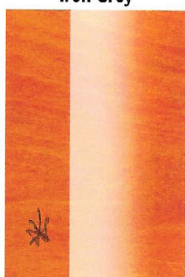
PB
Polished Black



NL
Glossy Natural



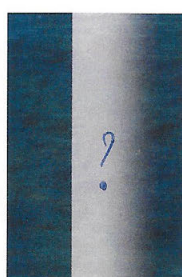
CY
Transparent Cherry Red



HA
Transparent Honey Amber



TP
Transparent Purple



TS
Transparent Sapphire



EG
Transparent Emerald Green



HARDWARE



Double-Braced Tripod Base

Mapex double-braced, curved tripod legs and rigid cross support assures massive stability and security.



Mapex Designed Castings & Slip-Proof Nylon Sleeve

Secure the stand height within slip-proof nylon sleeves designed into the chrome castings, featuring the high-grade steel wing nuts that tighten into recessed steel nuts.



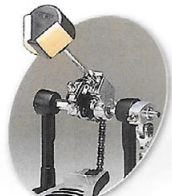
OS Cymbal Accentuator™

Enhance the sustain of the cymbal through minimal contact, offer more protection from the wing nut on top of the cymbal itself and will not compress or shred like traditional felt washers.



10-Stop Spring Tension Adjustment

Incremental, positive tension adjustment for the individual's needs and playing style.
US Patent 4977810.



Tri-Tonal Beater

Maple, felt and plastic provide a variety of sounds and feel.

The M series includes a full-range of medium-weight, dependable and durable hardware. The 550 series double-braced stands secure stand height with slip-proof nylon sleeves within chrome castings featuring high-grade steel wing screws that secure into recessed steel nuts.

Hi-Hat Stand H550

Patented HH clutch and Tri-Nodal cymbal seat
Rotating single-braced heavy-weight legs
10-stop wide range spring tension adjustment

Pedal P550

Tri-tonal beater- Maple, Felt and Plastic
Patented floating bass drum hoop clamp
turdy steel footboard plate
Rolling power drive cam and chain drive

Boom Stand B550 & Cymbal Stand C550

OS Cymbal Accentuator
Steel-to-steel clamps with nylon inserts
Multi-tooth ratch
Memory locks on lower castings

Snare Stand S550

18-Tooth ratch gear tilter
Memory locks on castings
Solid double-braced, middle-weight tubing



the subtleties of studio

Available Models

| | M5225 | M5255 | M5044 | M6225 |
|---------------------|--------|--------|--------|----------------|
| Bass Drum | 22x18 | 22x18 | 20x16 | 22x18 |
| Rack Tom | 10x9 | 10x9 | 10x8 | 10x9 |
| | 12x10 | 12x10 | 12X10 | 12X10 |
| | 14x12 | 13X11 | | 14X12 16X14 |
| Floor Tom | | 16X16 | 14x14 | |
| Snare Drum | 14x5.5 | 14x5.5 | 14x5.5 | 14x5.5 |
| Snare Stand | S550 | S550 | S550 | S550 |
| Hi-Hat Stand | H550 | H550 | H550 | H550 |
| Cymbal Stand | C550 | C550 | C550 | C550 |
| Boom Stand | B550 | B550 | | B550 |
| Pedal | P550 | P550 | P550 | P550 |

Components

| | | |
|-------------------|----------|----------|
| Bass Drum | 18"X14" | MB1814N |
| | 20"X16" | MB2016N |
| | 22"X16" | MB2216N |
| | 14"X14" | MF1414N |
| Floor Tom | 16"X16" | MF1616N |
| | 18"X16" | MF1816N |
| Rack Tom | 8"X8" | MT808N |
| | 10"X8 | MT1008N |
| | 10"X9" | MT1009N |
| | 12"X10" | MT12104N |
| | 13"X11" | MT1311N |
| | 14"X12" | MT1412N |
| Snare Drum | 14"X5.5" | MS4556N |
| | 14"X6.5" | MS4656N |

M
series