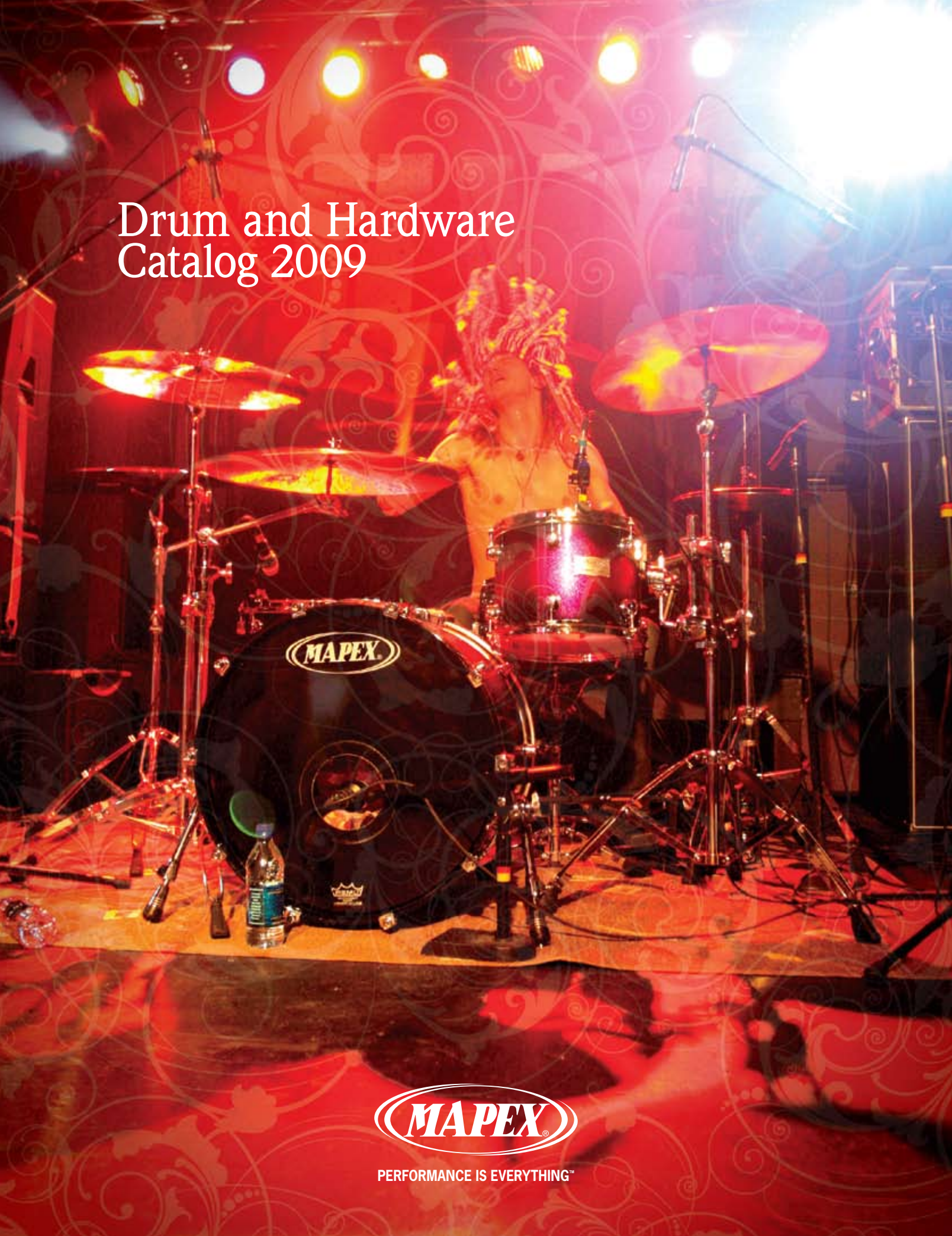


# Drum and Hardware Catalog 2009



PERFORMANCE IS EVERYTHING™





**PERFORMANCE IS EVERYTHING™**

Elias Andra, Julien k  
On the cover: Moe Carlson, Protest the Hero



Tonight, you'll sit down to perform and like every night, you'll give it your all. You've figured out that giving your best performance reaps valuable rewards. If you give it your best tonight, you'll learn something new about yourself, about your playing, about your music. That information will be filed away in your head and will no doubt, contribute to the success of tomorrow night's performance.

Because to you, performance is everything.

As your playing progresses, these tidbits of information are collected and over time, are woven to create the fabric of your ability. Sometimes they're small and hardly noticeable. Other times they're epiphanic, redirecting the very course of your drum-playing life. They are just as likely to come to you during the biggest gig you've ever played as they are when you're messing around by yourself on the kit you keep in the garage.

Because to you, performance is everything.

With this level of understanding, Mapex is constantly learning and growing along with drummers, taking the information they feed us and shaping it into the most exciting and progressive drum products in the world.

Don't just take it from us. Ask your friends who play Mapex. Ask your nearest independent Mapex Retailer. In addition to being one of the industry's fastest growing drum makers, Mapex has recently won five major industry awards for its performance in customer service, its performance in manufacturing and performance in product innovation.

Because to Mapex, performance is everything.





Chris Adler  
*Lamb of God*



Sam Aliano  
*Independent*



Elias Andra  
*julien-k*



Brian Barnett  
*Hank Williams Jr. / John Rich*



Gregg Bissonette  
*Independent*



Brady Blade  
*Emmylou Harris / Dave Matthews*



John Boecklin  
*DevilDriver*



DJ Bonebrake  
*X*



Rick Brothers  
*Smokey Lonesome*



Jordan Burns  
*Strung Out*



David Calarco  
*Independent*



Will Calhoun  
*Living Colour*



Moe Carlson  
*Protest the Hero*



Stephane Chamberland  
*Independent*



Judy Cocuzza  
*Independent*



Tony Coleman  
*B.B. King*



Billy Copeland  
*Billy Ray Cyrus*



Rocky Covington  
*Bucky Covington*



Malcolm Cross  
*Pete Yorn / Minibar*



Nick DeVirgilio  
*Spock's Beard / Tears for Fears*



Liberty DeVitto  
*Independent*



Marko Djordjevic  
*Sveti / The Drummer's Collective*

# Mapex USA Artists



Jim Donovan  
*Independent*



Vince Ector  
*Independent*



Erik Eldenius  
*Ace Young*



Dom Famularo  
*Drumming's Global Ambassador*



Derrick Frost  
*Chiodos*



Eric Green  
*N.E.R.D.*



Mike Hodges  
*Adrian Belew*



Nioshi Jackson  
*Crystal Shawanna*



Mylious Johnson  
*Jovanotti / Tiziano Ferro and Kid Guch*



Rory Koff  
*No Use For a Name*



Waldo Madera  
*Ricky Martin / Juanes*



Cole Marcus  
*Independent*



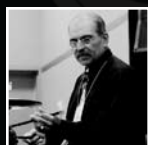
Jason Marsalis  
*Independent*



Mitch Marine  
*Dwight Yoakam*



Mat Marucci  
*Cadence / CIMP Recording Artist*



Marty Merrill  
*Duke Ellington*



Kevin Miller  
*Tantric / Foster Child*



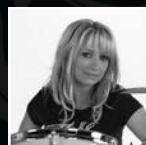
Mike Novak  
*Every Time I Die*



Doug Pellerin  
*Independent*



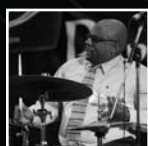
Chris Pennie  
*Coheed and Cambria*



Darla Rae Perlozzi  
*Independent*



Mike Peters  
*Cancer Bats*



Ralph Peterson Jr.  
*Berklee College of Music*



Wardell Pearson  
*Vivian Green*



Tony Pia  
*Brian Setzer Orchestra*



Aquillies Priester  
*Independent*



Keech Rainwater  
*Lonestar*



Walfredo Reyes Jr.  
*Lindsay Buckingham / Santana*



Herlin Riley  
*Wynton Marsalis*



Darrell Robinson  
*N.E.R.D.*



Jerry Roe  
*The Wreckers / Michelle Branch*



Fernando Sanchez  
*Ben Jelen / Gran Ronde*



Ty Smith  
*Godhead*



Glen Sobel  
*Elliott Yamin*



Stacey Lamont Sydnor  
*Wayne Brady / Sly and the Family Stone*



Tom Van Schaik  
*Robert Earl Keen*



Rashid Williams  
*John Legend*



Matt Wolfe  
*Byzantine*

Nick DeVigilo - Spock's Beard, Tears for Fears



# Orion

Mapex's flagship Orion Series established the standard for high-end exotic veneer maple drums. Thin North American shells produce outstanding resonance and crisp Mapex tone. Luxurious hand-rubbed lacquer finishes ensures that the Orion Series looks as spectacular as it sounds. In order to satisfy the discerning needs of the musician, Orion is sold by component only, allowing the buyer to specify exactly the sizes and configuration that best suit his or her style.



Gregg Bissonette -  
Ringo Starr and His All-Star Band





# Orion

- 7-ply, 7.5mm bass drums, 6.1mm toms, North American maple toms with hand-selected burl maple exterior ply.
- Eight coat, hand applied deep gloss lacquer finish
- Exclusive Isolated Tom Mounting System on all suspended toms and floor toms
- Exclusive Isolated Tom Mounting System on bass drums
- Spring-loaded floor tom legs
- Low mass, single-point-of-contact lugs
- Low profile, cushioned, die cast bass drum claw hooks
- 2.3mm Steel Mapex Powerhoops
- Remo® Ambassador drum heads



All New Finish For 2009 Cosmic Cloud Burst  
shown with black hardware.

## Orion Components

Bass Drums	
BMB1814	18 x 14
BMB1814A*	18 x 14
BMB1816	18 x 16
BMB1816A*	18 x 16
BMB2014	20 x 14
BMB2014A*	20 x 14
BMB2016	20 x 16
BMB2016A*	20 x 16
BMB2018	20 x 18
BMB2018A*	20 x 18
BMB2020A*	20 x 20
BMB2216	22 x 16
BMB2216A*	22 x 16
BMB2218	22 x 18
BMB2218A*	22 x 18
BMB2220A*	22 x 20
BMB2416A*	24 x 16
BMB2418A*	24 x 18
BMB2420A*	24 x 20

\* Bass drum does not include tom mount.

### Gong Bass Drum

BMGB1816	18 x 16
----------	---------

Tom Toms	
BMT807	8 x 7
BMT808	8 x 8
BMT1007	10 x 7
BMT1008	10 x 8
BMT1009	10 x 9
BMT1207	12 x 7
BMT1208	12 x 8
BMT1209	12 x 9
BMT1210	12 x 10
BMT1307	13 x 7
BMT1309	13 x 9
BMT1310	13 x 10
BMT1311	13 x 11
BMT1410	14 x 10
BMT1411	14 x 11
BMT1412	14 x 12
BMT1512	15 x 12
BMT1513	15 x 13
BMT1613	16 x 13
BMT1614	16 x 14

Floor Toms	
BMF1411	14 x 11
BMF1412	14 x 12
BMF1414	14 x 14
BMF1513	15 x 13
BMF1515	15 x 15
BMF1613	16 x 13
BMF1614	16 x 14
BMF1616	16 x 16
BMF1816	18 x 16

Snare Drums	
BMS3600	13 x 6
BMS4550	14 x 5.5
BMS4650	14 x 6.5
BMS4700	14 x 7

Orion components can be ordered with chrome, black or gold hardware.



## Finishes

	Blue Mist Burst (TN)
	Butter Burst (UB)
	Cinnamon Fade (FS)
	Coffee Burst (TO)
	<b>NEW</b> Cosmic Cloud Burst (SL)
	Ebony Burst (TK)
	Imperial Burst (TL)
	Transparent Red (TR)
	Teal Burst (TU)
	Wine Burl Burst (TY)





Chris Adler - Lamb Of God



# Saturn

The Mapex Saturn is ideal for any professional studio application and has been extensively tested on tours by Mapex artists for years. Saturn is available in a wide variety of complete drum sets and shell packs. A multitude of components can be added to complete any desired set-up. With its unique thin maple and walnut shell, Saturn produces a deep, rich tone that thousands of players have made their drum of choice.



Will Calhoun - Living Colour



The Saturn Plus Bass Pop Fusion 22 configuration  
in the new Cherry Sparkle lacquer finish



# Saturn

- 6-ply, 7.5mm bass drums, 5.1mm toms, two interior walnut plies, four exterior maple plies
- Eight coat, hand applied deep gloss lacquer finish
- Exclusive Isolated Tom Mounting System on all toms
- Exclusive Isolated Tom Mounting System on bass drums
- Spring-loaded floor tom legs
- Low mass, single-point-of-contact lugs
- Low profile, cushioned, dies cast bass drum claw hooks
- 2.3mm Steel Mapex Powerhoops
- Remo® Emperor batter heads on all toms, Remo® Ambassador heads on snare and bass drums






# Saturn



The Saturn Studioease configuration in the new Tobacco Fade lacquer finish



Waldo Madera - Juanes / Ricky Martin

The incredibly thin composite maple and walnut shell has made the Saturn Series a favorite among professional players. With its wide tuning range and its rich, powerful bottom end, Saturn performs as well in the studio as it does in a concert hall.

Saturn configurations are available with a full complement of 750 Series hardware or as shell packs.



# Saturn



The Saturn can be ordered in a multitude of custom configurations. This ten-piece setup is shown in the spectacular, Mapex-exclusive Cosmic Krush covered finish with black hardware.



Tony Coleman - B.B. King





## Saturn Configurations

Configuration	Bass Drum	Tom Toms	Floor Toms	Snare Drum	Tom Holder	Tom Stand	Boom Stand	Cymbal Stand	Snare Stand	Hi-Hat Stand	Pedal	Multi-Clamp
<b>7-PIECE</b>												
Plus Bass Fusion Pop 22 SW7287U	22 x 20	8 x 7 10 x 8 12 x 9	14 x 12 16 x 14	14 x 5.5		TS960A TS700	B750A (x2)		S750A	H750A	P750A	
<b>6-PIECE</b>												
Studioease SW6285U	22 x 18	10 x 8 12 x 9	14 x 14 16 x 16	14 x 5.5	TH682		B750A (x2)		S750A	H750A	P750A	
<b>5-PIECE</b>												
<b>NEW</b> SRO SW5295U	22 x 18	10 x 8 12 x 9	16 x 16	14 x 5.5	TH682		B750A (x2)		S750A	H750A	P750A	
Standard SW5255U	22 x 18	12 x 9 13 x 10	16 x 16	14 x 5.5	TH682		B750A (x2)		S750A	H750A	P750A	
Fusionease SW5245U	22 x 18	10 x 8 12 x 9	14 x 14	14 x 5.5	TH682		B750A (x2)		S750A	H750A	P750A	
Jazz SW5045U	20 x 18	10 x 8 12 x 9	14 x 14	14 x 5.5	TH682		B750A (x2)		S750A	H750A	P750A	
<b>4-PIECE</b>												
Manhattan SW4815U	18 x 14	12 x 8	14 x 14	14 x 5.5	TH653		B350A	C350A	S350A	H350A	P700	AC909

All Saturn configurations are available as shell packs. Consult your dealer for contents and availability.

## Components

Bass Drums	
SWB1814U	18 x 14
SWB1816U	18 x 16
SWB2014U	20 x 14
SWB2016U	20 x 16
SWB2018U	20 x 18
SWB2216U	22 x 16
SWB2216UA*	22 x 16
SWB2218U	22 x 18
SWB2220UA*	22 x 20
SWB2418U*	24 x 18
SWB2420U*	24 x 20

\* Bass drum does not include tom mount.

Gong Bass Drum	
SWGB1816A	18 x 16

Tom Toms	
SWT807U	8 x 7
SWT808U	8 x 8
SWT1055U	10 x 5.5
SWT1007U	10 x 7
SWT1008U	10 x 8
SWT1009U	10 x 9
SWT1206U	12 x 6
SWT1208U	12 x 8
SWT1209U	12 x 9
SWT1210U	12 x 10
SWT1310U	13 x 10
SWT1311U	13 x 11
SWT1407U	14 x 7
SWT1410U	14 x 10
SWT1411U	14 x 11
SWT1412U	14 x 12
SWT1512U	15 x 12
SWT1513U	15 x 13
SWT1613U	16 x 13
SWT1614U	16 x 14

Floor Toms	
SWF1412U	14 x 12
SWF1414U	14 x 14
SWF1513U	15 x 13
SWF1515U	15 x 15
SWF1614U	16 x 14
SWF1616U	16 x 16
SWF1816U	18 x 16

Snare Drums	
SWS3550U	13 x 5.5
SWS4550U	14 x 5.5
SWS4650U	14 x 6.5
SWS4700U	14 x 7



Saturn drum sets, shell packs and components can be ordered with chrome or black hardware.

## Finishes

	Blue Galaxy Sparkle Burst (TT)
	Cosmic Krush (KM)
	Crystal Krush (KT)
	Electric Berry Burst (TH)
	Galaxy Burst (TJ)
	Gloss Natural (NL)
	Green Apple Burst (TG)
	Mango Burst (TM)
	Root Beer Burst (TX)
	Tobacco Burst (OB)
	Transparent Black (TB)
	Transparent Cherry Red (CY)
	Cherry Sparkle (RL)

Mike Novak - Every Time I Die



# Meridian Maple

New for 2009, the Mapex Meridian Maple ushers in a new level of quality and functionality in mid-level all maple drum sets. With a completely new lug and redesigned lightweight Isolated Tom Mounting System, the Meridian Series features bright and resonant all maple shells in a wide selection of lacquered and covered finishes. Each Meridian drum set is also equipped with all new, feature-packed Mapex 700 Series hardware.



Chris Pennie - Coheed and Cambria



The new Meridian Maple Studioease Configuration, shown in the Midnight Steel lacquer finish.





# Meridian Maple

- 7-ply all maple, 5.8mm toms and snares, 7.2mm bass drum
- Newly engineered Isolated Tom Mount System (ITS™)
- Newly designed lug with smaller footprint for lower overall mass
- 2.3mm Mapex Powerhoops
- Spring-cushioned floor tom legs
- Eight coat, hand-sanded, high gloss lacquer finish
- Redesigned Bass drum tom mount with and built-in adapter for optional boom arm
- Low-profile, recessed bass drum claws with cushioning gasket
- 10 lug all maple snare drum
- Remo® UT Pinstripe heads
- Instructional Setup DVD included



# Meridian Maple

Derrick Frost - Chiodos



The all-new Meridian Maple SRO Configuration features a 10, 12, 16 setup, shown here in the Volcano Burst lacquer finish.





Along with the introduction of the Meridian Series comes the introduction of Mapex's newly designed Isolated Tom Mount System.

This version of the system is significantly lighter in weight and lower in profile than before and is more easily mounted and adjusted.

Additionally, the unique Mapex off-the-shell design and single-point-of-contact lugs distribute tension evenly across the shell for even better resonance and sustain.









# Meridian Maple in Sparkle Wrap Finishes

The Mapex Meridian Maple is also available in three Delmar® Sparkle Wrap finishes. These durable, yet dazzling coverings are ideal for players that are constantly on the move. Platinum, Indigo and Burgundy Sparkle Wrap finishes are only available in the six-piece Studioease Shell Packs.

Hardware pack sold separately.



## Meridian Maple Configurations

Configuration	Bass Drum	Tom Toms	Floor Toms	Snare Drums	Tom Holder	Tom Stand	Boom Stand	Cymbal Stand	Snare Stand	Hi-Hat Stand	Pedal	Multi-Clamp
<b>6-PIECE DRUM SETS</b>												
Studioease MP6285	22 x 18	10 x 8 12 x 9	14x14 16x16	14 x 5.5	TH676		B700	C700	S700	H700	P700	
<b>5-PIECE DRUM SETS</b>												
<b>NEW SRO</b> MP5295	22 x 18	10 x 8 12 x 9	16 x 16	14 x 5.5	TH676		B700	C700	S700	H700	P700	
Standard MP5255	22 x 18	12 x 9 13 x 10	16 x 16	14 x 5.5	TH676		B700	C700	S700	H700	P700	
Fusionease MP5245	22 x 18	10 x 8 12 x 9	14 x 14	14 x 5.5	TH676		B700	C700	S700	H700	P700	
Jazz MP5045	20 x 18	10 x 8 12 x 9	14 x 14	14 x 5.5	TH676		B700	C700	S700	H700	P700	
<b>4-PIECE SHELL PACK</b>												
Manhattan MP481S	18 x 14	12 x 8	14 x 14	14 x 5.5	TH653							
<b>ADD-ON PACK</b>												
Go-Large Maple MPBF2218PK	22 x 18	10 x 8	18 x 16		TH676		B700				P700	

## Components

Bass Drums	
MPB1814	18 x 14
MPB1816	18 x 16
MPB2016	20 x 16
MPB2018	20 x 18
MPB2216	22 x 16
MPB2218	22 x 18
MPB2218A*	22 x 18
MPB2220A*	22 x 20
MPB2418*	24 x 18
MPB2420*	24 x 20

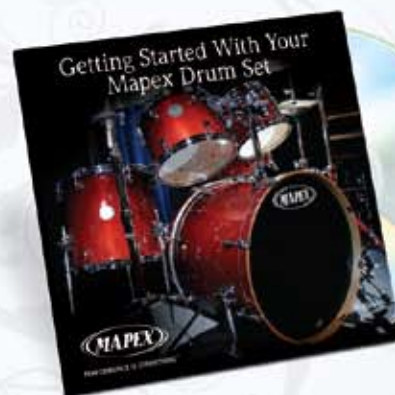
\* Bass drum does not include tom mount.

Gong Bass Drums	
MPGB1816	18 x 16

Tom Toms	
MPT804	8 x 4
MPT807	8 x 7
MPT808	8 x 8
MPT1055	10 x 5.5
MPT1007	10 x 7
MPT1008	10 x 8
MPT1009	10 x 9
MPT1206	12 x 6
MPT1208	12 x 8
MPT1209	12 x 9
MPT1210	12 x 10
MPT1309	13 x 9
MPT1310	13 x 10
MPT1311	13 x 11
MPT1407	14 x 7
MPT1410	14 x 10
MPT1411	14 x 11
MPT1412	14 x 12
MPT1608	16 x 8
MPT1613	16 x 13
MPT1614	16 x 14

Floor Toms	
MPF1412	14 x 12
MPF1414	14 x 14
MPF1515	15 x 15
MPF1613	16 x 13
MPF1614	16 x 14
MPF1616	16 x 16
MPF1816	18 x 16

Snare Drums	
MPS3506	13 x 5.5
MPS4556	14 x 5.5
MPS4656	14 x 6.5
MPS4706	14 x 7
MPS4806	14 x 8



Meridian drum sets come with an instructional DVD that will help you start enjoying your drums the day you get them home.



Meridian bass drum claws are cushioned to prevent damage to the hoop.

## Finishes

	Gloss Natural (NL)
	Midnight Steel (PE)
	Sienna Burst (IT)
	Transparent Cherry Red (CY)
	Transparent Midnight Black (MB)
	Vanilla Cream Pearl (VP)
	Volcanic Burst (TZ)
<b>Available in Studioease Shell Pack Only (MP628S)</b>	
	Burgundy Sparkle Covering by Delmar® (RX)
	Platinum Sparkle Covering by Delmar® (PX)
	Indigo Sparkle Covering by Delmar® (LX)

Some items and/or finishes may only be available via special order. Consult your retailer for details.

Darrell Robinson - N.E.R.D.



# Meridian Birch

Like its Maple counterpart, the all new Meridian Birch employs the same lightweight and ergonomic Isolated Tom Mounting System for maximum resonance and sustain. The Meridian's thin birch shells offer plenty of attack and remarkable tone.

To make sure you're ready play as soon as possible, Meridian Birch drums sets come with all-new, feature-rich Mapex 700 Series hardware.



Moe Carlson - Protest the Hero







# Meridian Birch

- 6-ply all birch, 7.2mm toms and snares, 7.2mm bass drum
- Newly engineered Isolated Tom Mount System (ITS)
- Newly designed lug with smaller footprint for lower overall mass
- Eight coat, hand-sanded, high gloss lacquer finish
- Redesigned Bass drum tom mount with and built-in adapter for optional boom arm
- Low-profile, recessed bass drum claws with cushioning gasket
- All birch snare drum
- Remo® UT heads
- Instructional Setup DVD included

The new Meridian Birch Studioease Configuration, shown in the Cherry Mist lacquer finish. (Set shown with optional B74 Boom Arm.)



# Meridian Birch







The new Meridian Birch Jazz Configuration, shown in the Transparent Honey Amber lacquer finish.  
(Set shown with optional B74 Boom Arm.)



The new Meridian Birch Fusionease Configuration, shown in the Sapphire Fade lacquer finish.



## Meridian Birch Configurations

Configuration	Bass Drum	Tom Toms	Floor Toms	Snare Drums	Tom Holder	Tom Stand	Boom Stand	Cymbal Stand	Snare Stand	Hi-Hat Stand	Pedal	Multi-Clamp
<b>6-PIECE DRUM SETS</b>												
Studioease MR6285	22 x 18	10 x 8 12 x 9	14x14 16x16	14 x 5.5	TH676		B700	C700	S700	H700	P700	
<b>5-PIECE DRUM SETS</b>												
<b>NEW SRO</b> MR5295	22 x 18	10 x 8 12 x 9	16 x 16	14 x 5.5	TH676		B700	C700	S700	H700	P700	
Standard MR5255	22 x 18	12 x 9 13 x 10	16 x 16	14 x 5.5	TH676		B700	C700	S700	H700	P700	
Fusionease MR5245	22 x 18	10 x 8 12 x 9	14 x 14	14 x 5.5	TH676		B700	C700	S700	H700	P700	
Jazz MR5045	20 x 18	10 x 8 12 x 9	14 x 14	14 x 5.5	TH676		B700	C700	S700	H700	P700	
<b>ADD-ON PACK</b>												
Go-Large Birch MRBF2218PK	22 x 18	10 x 8	18 x 16		TH676		B700				P700	

Some items and/or finishes may only be available via special order. Consult your retailer for details.

## Components

Bass Drums	
MRB1814	18 x 14
MRB2016	20 x 16
MRB2018	20 x 18
MRB2216	22 x 16
MRB2218	22 x 18
MRB2418	24 x 18

Tom Toms	
MRT807	8 x 7
MRT808	8 x 8
MRT1007	10 x 7
MRT1008	10 x 8
MRT1009	10 x 9
MRT1208	12 x 8
MRT1209	12 x 9
MRT1210	12 x 10
MRT1309	13 x 9
MRT1310	13 x 10
MRT1311	13 x 11
MRT1411	14 x 11
MRT1412	14 x 12
MRT1613	16 x 13
MRT1614	16 x 14

Floor Toms	
MRF1414	14 x 14
MRF1616	16 x 16
MRF1816	18 x 16

Snare Drums	
MRS4556	14 x 5.5
MRS4656	14 x 6.5



Meridian drum sets come with an instructional DVD that will help you start enjoying your drums the day you get them home.

Meridian Series bass drum tom holders (TH676) include a socket for a boom arm, giving you an additional cymbal or accessory placement. (B74 Cymbal Boom Arm sold separately.)

## Finishes

	Caramel Fade (YL)
	Cherry Mist (LE)
	Sapphire Fade (SI)
	Transparent Cherry Red (CY)
	Transparent Honey Amber (HA)
	Transparent Midnight Black (MB)
	Transparent Sapphire (TS)
	Tobacco Fade (TF)

Walfredo Reyes Jr. - Santana, Lindsey Buckingham



# QR

With genuine basswood shells and Mapex's exclusive Isolated Tom Mounting System, the QR Series features appointments that rival those found on far more expensive drum sets. If you're in search of a terrific first drum set or a superb second set for gigging, the QR is the kit you need.



# QR



The QR Fusionease Configuration, shown in the Blue Sparkle wrapped finish.

## QR Configurations

Configuration	Bass Drum	Tom Toms	Floor Toms	Snare Drum	Tom Holder	Boom Stand	Snare Stand	Hi-Hat Stand	Pedal	Throne	Planet Z Cymbals
5-PIECE SETS											OPTIONAL
Standard QR5254TN	22 x 16	12 x 9 13 x 10	16 x 16	14 x 5.5	TH630	B300A	S300A	H300A	P320A	T250A	14" Hi-Hats 18" Crash/Ride
Fusionease QR5244TN	22 x 16	10 x 8 12 x 9	14 x 14	14 x 5.5	TH630	B300A	S300A	H300A	P320A	T250A	14" Hi-Hats 18" Crash/Ride
Jazz QR5044TN	20 x 16	10 x 8 12 x 9	14 x 14	14 x 5.5	TH630	B300A	S300A	H300A	P320A	T250A	14" Hi-Hats 18" Crash/Ride

- 9-ply, 7.2mm basswood shells
- Exclusive Mapex Isolated Tom Mount System (ITS)
- Attractive and durable wrapped coverings
- Flanged hoops on toms and snares
- Mapex double braced hardware and drummer's throne
- Low mass, single point-of-contact lugs
- Wooden bass drum hoops with matching inlays
- Matching basswood snare drum
- Remo® heads, including self-muffling bass drum head



QR Series drum sets come with an instructional DVD that will help you start enjoying your drums the day you get them home.

QR Series drum sets are available with Planet Z Cymbals. Made in the USA by Zildjian, Planet Z cymbals are a great choice for your new drum set. See your retailer for details.

## Components

Bass Drums	
QRB2216	22 x 16
Tom Toms	
QRT807	8 x 7
QRT808	8 x 8
QRT1008	10 x 8
QRT1209	12 x 9
QRT1310	13 x 10
QRT1411	14 x 11
Floor Toms	
QRF1414	14 x 14
QRF1616	16 x 16
QRF1816	18 x 16
Snare Drums	
QRS4556	14 x 5.5

## Finishes

	Black (BL)
	Blue Sparkle (NS)
	Burgundy Steel (YT)
	Gray Steel (GT)
	Indigo Steel (UT)
	Silver Sparkle (SX)







# Q Series

## Better drums for a better start

The Q Series is ideal for those just starting out in the world of percussion. Available in three durable and attractive covered finishes, the Q Series is a great drum set at a great price!

- 9-ply 7.2mm basswood shells
- Durable, high-gloss wrapped finish
- Double-braced hardware
- Matching basswood snare drum
- Drummer's throne included
- Includes sturdy TH630 Tom Holder
- Remo® equipped, including self-muffling bass drum head
- Wooden bass drum hoops with matching inlays
- Limited Lifetime Warranty on drum shells
- 5-year Limited Warranty on hardware



QR Series drum sets come with an instructional DVD that will help you start enjoying your drums the day you get them home.

Configuration	Bass Drum	Tom Toms	Floor Toms	Snare Drum	Tom Holder	Cymbal Stand	Snare Stand	Hi-Hat Stand	Pedal	Throne	Planet Z Cymbals
Standard Q5254TA	22 x 16	12 x 10 13 x 11	16 x 16	14 x 5.5	TH630	C300A	S300A	H300A	P320A	T250A	14" Hi-Hats 18" Crash



Black  
(BL)



Burgundy  
(BY)



Dark Indigo  
(DI)



# Black Panther Special Edition Mayan Steel Snare Drum



This beautifully crafted Black Panther snare drum captures the bold spirit of the ancient Mayan civilization. This 14x5.5, 1.0mm steel shell is embossed with traditional Mayan eagle/human mask art. The shell's bearing edge is rounded on the batter side for greater head to shell contact. The result is a stunningly attractive drum with tremendous projection and great feel.

The drum is also equipped with black hardware that has been brushed with bronze. Die cast hoops provide extra sensitivity and piercing crack.

A specially designed Remo® Fiberskin batter head tops off the exotic look of this highly collectable instrument. The Special Edition Mayan Snare also comes with a Black Panther Deluxe Padded Carrying Bag.

Model No: BPST455MA







# THE BLACK PANTHER CHRIS ADLER SIGNATURE SNARE DRUM



In 1995, Lamb Of God founding member and drummer, Chris Adler was browsing around a local drum shop, searching for a snare drum to complete the drum set he planned on using for recording with his new band. He wasn't exactly sure what he was looking for at the time, but he knew that the snare drum he chose would play a large role in defining his sound.

Eventually, he came upon a snare drum that caught his eye. While its 12 x 5.5 size was somewhat out-of-the-ordinary, he quickly realized as he tuned it and played it that this instrument was the sound he had been looking for — an articulate, yet explosive, artillery-like bang. That drum was a Mapex Black Panther Snare Drum. Chris was so impressed that he purchased it on the spot and immediately began using it in the studio and in the band's live shows.

The Chris Adler Signature Snare Drum is Mapex's first-ever signature snare drum. Every detail is meticulously designed to Chris's specifications. From the thin walnut shell, to the signature graphic (designed by Lamb Of God designer K3n), to Chris's personal choice of high-quality Aquarian drum heads.

"The size of the drum mixed with a high-tension, high-energy head creates a unique, high pitched, yet full bodied punch that has become a signature sound in my playing and in the band's catalog," said Chris upon his approval of the final prototype.

Now you can finally play the same snare drum that Chris Adler has used to inspire a new generation of metal drummers. Model No: BPWM2550BCANO

12 X 5.5 | 5.1MM WALNUT SHELL

CHRIS ADLER-INSPIRED ARTWORK WITH HIGH GLOSS LACQUER FINISH

2.3MM MAPEX POWERHOOPS

BLACK CHROME HARDWARE

BLACK PANTHER THROW-OFF

AQUARIAN® HE12 BATTER HEAD | CCSN12 SNARE HEAD

20-STRAND SNARE

BLACK PANTHER DELUXE PADDED CARRY BAG



The same shell that was voted "Snare Drum of the Year" by the readers of DRUM! Magazine now finished in a brilliant Silver Sparkle lacquer.

Shell Thickness: 12mm  
Shell Finish: Silver Sparkle  
Hoops: Die Cast Hoops  
Hoop Finish: Black Chrome  
Snare: 20-strand  
Heads: Remo® Ambassador™

This drum includes a Black Panther Deluxe Padded Carrying Bag.

BPML4600TBIL  
14" x 5.5"



# NEW Thick Maple

## BLACK PANTHER SNARE DRUMS

# Maple

The Black Panther Maple Snare is a staple for any set up. Choose from three popular sizes. All deliver rich, honest tone and superior resonance.

Shell Thickness: 5.1mm  
Shell Finish: Natural Gloss Lacquer\*  
Hoops: 2.3mm Mapex Powerhoops  
Hoop Finish: Chrome  
Snare: 20-strand  
Heads: Remo® Ambassador™



BPML4550BTB  
14" x 5.5"

\* Available only in Transparent Black Lacquer with Black Chrome Die Cast Hoops.







Die cast hoops provide plenty of extra "crack" and superior response.



The Black Panther Thick Maple Snare features a traditional deep snare bed and a rounded bearing edge for increased head-to-shell contact. The result is a warm, dark, full-bodied sound with incredibly soft feel.



BPML3600CNL  
13" x 6"



BPML4650CNL  
14" x 6.5"

BPML0550CNL  
10" x 5.5"





BPWT3600TBW  
13" x 6"

Black Panther Walnut Snares produce rich, dark, saturating tone that provides warmth and reliable responsiveness at any tuning.

Shell Thickness: 8.5mm  
Shell Finish: Brown Sugar Burst Lacquer  
Hoops: Die Cast Hoops  
Hoop Finish: Black Chrome  
Snare: 42-strand on 13 x 6 and 14 x 6.5  
20-strand on 14 x 5.5  
Heads: Remo® Ambassador™

These drums include a Black Panther Deluxe Padded Carrying Bag.

# Walnut

## BLACK PANTHER SNARE DRUMS

# Cherry

BPCW4550NL  
14" x 5.5"



The Black Panther Cherry Snare has a distinctive look and produces a sweet, full bodied sound.

Shell Thickness: 5.1mm  
Shell Finish: Natural Gloss Lacquer  
Hoops: Die Cast Hoops  
Hoop Finish: 24K Gold Plated  
Snare: 20-strand  
Heads: Remo® Ambassador™

Reliable full-bodied maple tone is masterfully presented in these subtle, yet handsome bird's eye maple shells.

Shell Thickness: 5.1mm  
Shell Finish: Flat Black Lacquer  
Hoops: Die Cast Hoops  
Hoop Finish: Black Chrome  
Snare: 20-strand  
Heads: Remo® Ambassador™





BPWT4550TBW  
14" x 5.5"

BPWT4650TBW  
14" x 6.5"



# Bird's Eye Maple

BPBE4550FB  
14" x 5.5"



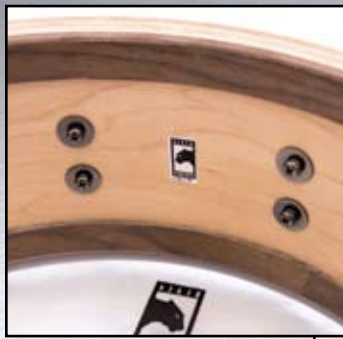
BPBE4650FB  
14" x 6.5"



This gorgeous instrument features a classic Black Panther maple shell with built-in walnut sound rings and a magnificently grained, hand selected elm exterior ply for exquisite beauty.

Shell Thickness: 6.1mm  
with Rings 9.5mm  
Shell Finish: Gloss Natural  
Hoops: Die Cast Hoops  
Hoop Finish: Black Chrome  
Snare: 20-strand  
Heads: Remo® Ambassador™

This drum includes a Black Panther  
Deluxe Padded Carrying Bag



The 4-ply walnut sound rings add additional roundness and darkness to the tone to the drum.

The beautiful hand selected elm wood grain is emphasized by the high gloss clear coat lacquer finish.



# Special Edition Elm

## BLACK PANTHER SNARE DRUMS

BPBR465HB  
14" x 6.5"



BPBR455HB  
14" x 5.5"







BPLM4550BXN  
14" x 5.5"



# Hammered Brass



Black Panther Hammered Brass snares are designed to produce bright, delicate tones regardless of whether the drum is played softly or extremely hard.

Shell Thickness:	1.2mm
Shell Finish:	Black Chrome
Hoops:	Die Cast Hoops
Hoop Finish:	Black Chrome
Snare:	20-strand
Heads:	Remo® Ambassador™



Black Panther Steel Snares produce razor sharp highs that can cut through any mix. Mapex 2.3mm Powerhoops add superior sensitivity and articulation.

Shell Thickness: 1.0mm  
Shell Finish: Black Chrome  
Hoops: 2.3mm Mapex Powerhoops  
Hoop Finish: Black Chrome  
Snare: 20-strand on 14 x 5.5  
Heads: Remo® Ambassador™

BPST0551  
10" x 5.5"



# Stainless Steel

## BLACK PANTHER SNARE DRUMS

# Solid Steel

The Black Panther Solid Steel features a seamless shell that is routed with sound rings at the top and bottom of the inside of shell. The result is unforgettable dynamic reproduction. At a whopping 17.3lbs, the Solid Steel Snare produces the kind of punch that you would expect from a heavyweight.

Shell Thickness: 3.0mm at center  
5.0mm at sound control ring  
Shell Finish: Black Chrome  
Hoops: Die Cast Hoops  
Hoop Finish: Black Chrome  
Snare: 20-strand  
Heads: Remo® Ambassador™

This drum includes a Black Panther Deluxe Padded Carrying Bag.

BPST455SLBR  
14" x 5.5"







BPST4651A  
14" x 6.5"



BPST4551A  
14" x 5.5"



# Hammered Steel



BPST455H  
14" x 5.5"

The hand hammered shell adds additional brightness and versatility to a shell that features incredible range.

Shell Thickness: 1.0mm  
Shell Finish: Stainless Steel  
Hoops: Die Cast Hoops  
Hoop Finish: Chrome  
Snare: 20-strand  
Heads: Remo® Ambassador™



# Mapex introduces Value made

## **MPX Maple 13 x 6**

[MPML3600CNL]

- 5.1mm maple shell
- Natural Gloss finish
- 16 low-mass lugs
- Chrome hardware
- Fully adjustable throw-off
- Remo® drum heads

## **MPX Maple 14 x 5.5**

[MPML4550CNL]

- 5.1mm maple shell
- Natural Gloss finish
- 20 low-mass lugs
- Chrome hardware
- Fully adjustable throw-off
- Remo® drum heads

## **MPX Steel 14 x 5.5**

[MPST4550]

- 1.2mm stainless steel shell
- Chrome finish
- 20 low-mass lugs
- Chrome hardware
- Fully adjustable throw-off
- Remo® drum heads

## **MPX Steel 13 x 3.5**

[MPST3354]

- 1.2mm stainless steel shell
- Chrome finish
- 16 low-mass lugs
- Chrome hardware
- Fully adjustable throw-off
- Remo® drum heads

## **MPX Steel 10 x 5.5**

[MPST0554]

- 1.2mm stainless steel shell
- Chrome finish
- 20 low-mass lugs
- with tom-style mount
- Chrome hardware
- Fully adjustable throw-off
- Remo® drum heads





# MPX Snare Drums. loud and clear.



## **MPX Birch 14 x 5.5**

[MPBC4550CXN]

- 5.1mm birch shell
- Natural Gloss finish
- 20 low-mass lugs
- Chrome hardware
- Fully adjustable throw-off
- Remo® drum heads



## **MPX Birch 13 x 6**

[MPBC3600BMB]

- 5.1mm birch shell
- Natural Gloss finish
- 16 low-mass lugs
- Black hardware
- Fully adjustable throw-off
- Remo® drum heads

## **MPX Birch 14 x 5.5**

[MPBC4550BMB]

- 5.1mm birch shell
- Natural Gloss finish
- 20 low-mass lugs
- Black hardware
- Fully adjustable throw-off
- Remo® drum heads

# NEW MAPEX 700 SERIES HARDWARE

## B700 BOOM STAND

- **NEW** Multi-Sustain Cymbal Felts - assemble any combination of felt and plastic for the perfect degree of sustain
- **NEW** Super-Glide Stepless Cymbal Tilter for smooth and accurate positioning
- **NEW** Accu-Lock Tilter Handle for extra precision



- Hideaway Boom Arm



- **NEW** Ergonomically Designed Wing nuts

- **NEW** Re-Engineered Clamp-style Memory Locks for extra security

- Three-tiered Height Adjustment with Molded Nylon Insert

- Double Braced Legs



- **NEW** Re-Designed Slip-Proof Rubber Feet







### **P700TW Double Pedal**

- Double Chain Drive
- Fully Adjustable Spring Tension
- Tri-Tonal Beaters
- Independent Universal Linkage Adjustment
- Rubber Sealed U-Joints
- Skid-Proof Stabilizer Plates
- Retractable Floor Spikes
- Patented Floating Hoop Clamp
- Drum Key Holder
- Five Year Warranty

### **C700 Cymbal Stand**

- New Multi-Sustain Cymbal Felts
- New Super-Glide Stepless Cymbal Tilter
- New Accu-lock Tilter Handle
- Ergonomically Designed Wing Nuts
- New Re-engineered Clamp-style Memory Locks
- Three-tiered Height Adjustment
- Double Braced Legs
- Re-Designed Slip Proof Rubber Feet

### **H700 Hi-Hat Stand**

- New Multi-Sustain Cymbal Felts
- Tru-Direct-Pull™ Drive System
- Adjustable Angle Footboard
- 10-Stop Wide-range Tension Adjustment
- Retractable Floor Spikes
- Dual Tube Construction with Slip-Proof Nylon Inner Sleeve
- New Re-engineered Clamp-style Memory Locks
- 360° Rotating Leg Assembly
- Double Braced Legs
- Re-Designed Slip Proof Rubber Feet
- Five Year Warranty

### **S700 Snare Stand**

- Multi-tooth Ratchet Snare Basket Tilter
- Dual Tube Construction with Slip-Proof Nylon Inner Sleeve
- New Re-engineered Clamp-style Memory Locks
- Double Braced Legs
- Re-Designed Slip Proof Rubber Feet
- Five Year Warranty

### **P700 Pedal**

- Chain Drive
- Fully Adjustable Spring Tension
- Tri-Tonal Beater
- Solid Steel Skid-proof Stabilizer Plate
- Retractable Floor Spikes
- Patented Floating Hoop Clamp
- Drum Key Holder
- Five Year Warranty



# 950 SERIES

## S950A Snare Stand

- Ground Reaching Center Shaft for extra low positioning for deep snares
- Universal Ball-in-Socket Snare Basket Tilter
- Dual Tube Construction with Slip-Proof Nylon Inner Sleeve
- Die Cast Memory Lock
- Double Braced Legs

## H950A Hi-Hat Stand

- Tru-Direct-Pull™ Drive System
- Adjustable Angle Footboard
- 10-Stop Wide-range Tension Adjustment
- OS Cymbal Accentuator for Top Cymbal
- Fully Adjustable Tri-Nodal Cymbal Seat
- Retractable Floor Spikes
- Dual Tube Construction with Slip-Proof Nylon Inner Sleeve
- Die Cast Memory Lock
- 360° Rotating Leg Assembly
- Double Braced Legs

## C950A Cymbal Stand

- Universal Ball-in-Socket Cymbal Tilter
- Triple Tube Construction with Slip-Proof Nylon Inner Sleeve
- OS Cymbal Accentuators
- Die Cast Memory Locks
- Double Braced Legs

## B950A Boom Stand

- Universal Ball-in-Socket Cymbal Tilter
- Knurled Hideaway Boom Arm
- Triple Tube Construction with Slip-Proof Nylon Inner Sleeve
- OS Cymbal Accentuators
- Die Cast Memory Locks
- Double Braced Legs

## P950A Pedal

- Double Chain Drive
- Adjustable Stabilizer Bearing
- Fully Adjustable Spring Tension
- Tri-Tonal Beater
- Solid Steel Skid-proof Stabilizer Plate
- Retractable Floor Spikes
- Patented Extra Large Floating Hoop Clamp
- Drum Key Holder

## P980A Double Pedal

- Double Chain Drive
- Fully Adjustable Spring Tension
- Tri-Tonal Beaters
- Independent Universal Linkage Adjustment
- Rubber Sealed U-Joints
- Solid Steel Skid-proof Stabilizer Plates
- Retractable Floor Spikes
- Patented Extra Large Floating Hoop Clamp
- Drum Key Holder







# 750 SERIES

## S750A Snare Stand

- Universal Ball-in-Socket Snare Basket Tilter
- Dual Tube Construction with Slip-Proof Nylon Inner Sleeve
- Die Cast Memory Lock
- Double Braced Legs

## H750A Hi-Hat Stand

- Tru-Direct-Pull™ Drive System
- 10-Stop Wide-range Tension Adjustment
- OS Cymbal Accentuator for Top Cymbal
- Heavy Duty Felt Bottom Cymbal Seat
- Retractable Floor Spikes
- Dual Tube Construction with Slip-Proof Nylon Inner Sleeve
- Die Cast Memory Lock
- 360° Rotating Leg Assembly
- Double Braced Legs

## C750A Cymbal Stand

- Universal Ball-in-Socket Cymbal Tilter
- Triple Tube Construction with Slip-Proof Nylon Inner Sleeve
- OS Cymbal Accentuators
- Die Cast Memory Locks
- Double Braced Legs

## B750A Boom Stand

- Universal Ball-in-Socket Cymbal Tilter
- Knurled Hideaway Boom Arm
- Triple Tube Construction with Slip-Proof Nylon Inner Sleeve
- OS Cymbal Accentuators
- Die Cast Memory Locks
- Double Braced Legs

## P750A

- Double Chain Drive
- Fully Adjustable Spring Tension
- Tri-Tonal Beater
- Solid Steel Skid-proof Stabilizer Plate
- Retractable Floor Spikes
- Patented Floating Hoop Clamp
- Drum Key Holder



# 350 SERIES

## S350A Snare Stand

- Multi-tooth Ratchet Snare Basket Tilter
- Dual Tube Construction with Slip-Proof Nylon Inner Sleeve
- Die Cast Memory Lock

## H350A Hi-Hat Stand

- Chain Pull Drive System
- OS Cymbal Accentuator for Top Cymbal
- Heavy Duty Felt Bottom Cymbal Seat
- Variable tension adjustment
- Retractable Floor Spike
- Dual Tube Construction with Slip-Proof Nylon Inner Sleeve
- Die Cast Memory Lock

## C350A Cymbal Stand

- Multi-Tooth Ratchet Cymbal Tilter
- Dual Tube Construction with Slip-Proof Nylon Inner Sleeve
- OS Cymbal Accentuators
- Die Cast Memory Lock

## B350A

- Multi-Tooth Ratchet Cymbal Tilter
- Dual Tube Construction with Slip-Proof Nylon Inner Sleeve
- OS Cymbal Accentuators
- Die Cast Memory Lock

## P380A

- Single Chain Drive
- Fully Adjustable Spring Tension
- Duo-tone Felt/ABS Beaters
- Fully Independent Universal Linkage Adjustment
- Steel Stabilizer Bars and Radius Rods
- Retractable Floor Spikes







# 320 SERIES

## S320A Snare Stand

- Multi-tooth Ratchet Snare Basket Tilter
- Dual Tube Construction with Slip-Proof Nylon Inner Sleeve
- Die Cast Memory Lock
- Double Braced Legs

## H320A Hi-Hat Stand

- Chain Pull Drive System
- Heavy Duty Felts for Top Cymbal
- Heavy Duty Felt Bottom Cymbal Seat
- Retractable Floor Spike
- Dual Tube Construction with Slip-Proof Nylon Inner Sleeve
- Die Cast Memory Lock
- Double Braced Legs

## C320A Cymbal Stand

- Multi-Tooth Ratchet Cymbal Tilter
- Dual Tube Construction with Slip-Proof Nylon Inner Sleeve
- Heavy Duty Cymbal Felts
- Die Cast Memory Lock
- Double Braced Legs

## B320A Boom Stand

- Multi-Tooth Ratchet Cymbal Tilter
- Dual Tube Construction with Slip-Proof Nylon Inner Sleeve
- Heavy Duty Cymbal Felts
- Die Cast Memory Lock
- Double Braced Legs

## P320A

- Single Chain Drive
- Fully Adjustable Spring Tension
- Hard Felt Beater
- Stabilizing Compact Radius Rods
- Retractable Floor Spikes



# STANDS

## TS960A Combo Stand

- One Cymbal Placement
- One Tom Holder
- Universal Ball-in-Socket Cymbal Tilter
- Universal Ball-in-Socket Tom Arm
- Dual Tube Construction with Slip-Proof Nylon Inner Sleeve
- Knurled Hideaway Boom Arm
- OS Cymbal Accentuators
- Die Cast Memory Locks
- Double Braced Legs

## TS965A Combo Stand

- Two Cymbal Placements
- One Tom Holder
- Universal Ball-in-Socket Cymbal Tilter
- Universal Ball-in-Socket Tom Arm
- Dual Tube Construction with Slip-Proof Nylon Inner Sleeve
- Knurled Hideaway Boom Arm
- OS Cymbal Accentuators
- Die Cast Memory Locks
- Double Braced Legs

## B990A Double Boom Stand

- Two Cymbal Placements
- Universal Ball-in-Socket Cymbal Tilters
- Dual Tube Construction with Slip-Proof Nylon Inner Sleeve
- OS Cymbal Accentuators
- Die Cast Memory Locks
- Double Braced Legs

## B995A Triple Boom Stand

- Three Cymbal Placements
- Universal Ball-in-Socket Cymbal Tilters
- Dual Tube Construction with Slip-Proof Nylon Inner Sleeve
- OS Cymbal Accentuators
- Die Cast Memory Locks
- Double Braced Legs

## TS950A Tom Stand

- Two Independently Adjustable Tom Holders
- Dual Tube Construction with Slip-Proof Nylon Inner Sleeve
- Universal Ball-in-Socket Tom Arm
- Die Cast Memory Locks
- Double Braced Legs

## NEW TS700 Tom Stand

- Two Tom Holders
- Dual Tube Construction with Slip-Proof Nylon Inner Sleeve
- Universal Ball-in-Socket Tom Arm
- New Re-engineered Clamp-style Memory Locks
- Double Braced Legs







**T755A**



**T750A**

# THRONES

## T755A

- Saddle-style Cushioned Seat
- Contoured Reinforced Foam Seat 17" wide by 4" thick
- Durable Soft-vinyl Seat Cover
- Die Cast Memory Lock
- Threaded Steel Rod Height Adjustment with Threaded Tube Collar Lock
- 18"- 26" Height Range
- Double Braced "Natural Curve" Legs for Extra Stability

## T750A

- Round Cushioned Seat
- 14" Diameter by 4" Thick
- Durable Soft-vinyl Seat Cover
- Die Cast Memory Lock
- Threaded Steel Rod Height Adjustment with Threaded Tube Collar Lock
- 18"- 26" Height Range
- Double Braced "Natural Curve" Legs for Extra Stability

## T575A

- Saddle-style Cushioned Seat
- Contoured Reinforced Foam Seat 17" wide by 4" thick
- Durable Soft-vinyl Seat Cover
- Die Cast Memory Lock
- Steel Tube Height Adjustment with Tube Collar Lock
- 16.1"- 24.4" Height Range
- Double Braced Legs

## T570A

- Round Cushioned Seat
- 14" Diameter by 4" Thick
- Durable Soft-vinyl Seat Cover
- Die Cast Memory Lock
- Steel Tube Height Adjustment with Tube Collar Lock
- 16.1"- 24.4" Height Range
- Double Braced Legs

## T550A

- Round Cushioned Seat
- 13" Diameter by 2.5" thick
- Durable Soft-vinyl Seat Cover
- Die Cast Memory Lock
- Steel Tube Height Adjustment with Tube Collar Lock
- 16.1"-24.4" Height Range
- Double Braced Legs

## T270A

- Round Cushioned Seat
- 12" Diameter by 2.5" thick
- Durable Soft-vinyl Seat Cover
- 6-position Keyway Rod with Stop Lock Nut
- 17.3"-22" Height Range
- Double Braced Legs



**T575A**



**T570A**



**T550A**



**T270A**

# MULTICLAMPS



**AC910**  
Horizontal adjustable multi-purpose clamp



**AC909**  
Adjustable bass drum lift for 18-inch bass drums



**AC911**  
Add-on boom arm with combination multi-clamp. Includes 12-inch knurled boom arm with universal ball-in-socket tilter and OS Cymbal Accentuator



**AC903**  
Combination center-ratchet adjustable multi-purpose clamp



**AC906**  
Bass drum/hi-hat attachment clamp for close placement in double bass set-ups



**AC912**  
Cowbell/Accessory holder for bass drum



**AC908**  
Cymbal/Tom arm multi-purpose platform with center hole to fit all 25.4mm stands



**AC913**  
Cowbell/Accessory holder for cymbal stand



# CYMBAL ARMS / TOM HOLDERS



## B74

2-piece hideaway boom cymbal arm (12-inch) with Multi-sustain Cymbal Felts, Super-Glide Stepless Tilter, Accu-lock Tilter Handle and Clamp-style Memory Lock



## B75

2-piece hideaway boom cymbal arm (12-inch) with universal ball-in-socket tilter, knurled boom arm and OS Cymbal Accentuator



## B78

2-piece hideaway boom cymbal arm (20.1-inch) with 2.2 lb counter-weight, universal ball-in-socket tilter, knurled boom arm and OS Cymbal Accentuator



## CH72

Adjustable Tension remote hi-hat arm with heavy duty felt bottom cymbal seat and OS Cymbal Accentuator



## TH685

Tom shaft and arm set for Orion Series, Tube Diameter: 25mm



## TH682

Tom shaft and arm set for Saturn Series, Tube Diameter: 25mm



## TH676

Tom shaft and arm set for Meridian Series, Tube Diameter: 25mm



## TH653

Single Tom Holder for Meridian Series and QR Series bass drums, Tube Diameter: 25.4mm



## TH684

Single Tom arm for add-on toms attached to tom stands, Tube Diameter: 22.2mm

# PARTS & ACCESSORIES



## MAPEX ROLLING HARDWARE BAG

Durable fabric Mapex rolling hardware bag with side compartments. Holds up to six pieces of hardware including stands and pedals.

Bag Dimensions: 38-in long x 14-in wide x 10-in deep  
PN: PMK-M113



## MAPEX LOGO STICKERS

Features Mapex "Swirl" logo in 10-inch and 3-inch sizes. Ideal for bass drum heads and road cases.  
PN: PMK-M269 (white) / PMK-M270 (black)



## REPLACEMENT LUGS

Four lugs per pack. Fits Saturn and Orion Bass Drums when removing tom mount apparatus. Available in Chrome, Black Chrome or Gold.

Part No.	Size
0702-D02A4	Chrome
0712-D13A4	Black
0702-D07A4	Gold



## LOGO BASS DRUM HEADS

### REMO® Weatherking Ambassador Ebony Powerstroke Front Head

Model	Size
0318-618BB-MP	18-inch
0318-620BB-MP	20-inch
0318-622BB-MP	22-inch
0318-624BB-MP	24-inch

### REMO® UT Self-Muting Ebony Front Head

Model	Size
0334-618CB-MP	18-inch
0334-620CB-MP	20-inch
0334-622CB-MP	22-inch
0334-624CB-MP	24-inch

### REMO® Weatherking White Powerstroke 3 Front Head

Model	Size
0318-K18BB-MP	18-inch
0318-K20BB-MP	20-inch
0318-K22BB-MP	22-inch
0318-K24BB-MP	24-inch



## PADDED DRUM BAG SETS

Model	Sizes
DB-T24202	Fusion (5225) or Fusionease (5245) 22 Bass, 10 Tom, 12 Tom, 14 Tom, 14x5.5 Snare
DB-T26324	Standard (5255) 22 Bass, 12 Tom, 13 Tom, 16 Floor Tom, 14x5.5 Snare

## SNARE WIRES

For Black Panther and Mapex Snare Drums

Part No.	Length	Strands	Plating
1S582850A	10-inch	20	Chrome
1A394850A	12-inch	20	Chrome
1K394850A	13-inch	20	Chrome
18794850A	14-inch	20	Chrome
1F6W0850	13-inch	42	Chrome
187W0850	14-inch	42	Chrome



## BLACK PANTHER DELUXE PADDED CARRYING BAG

Sturdy, easy-care rubberized exterior, soft, padded interior protects valuable snare drums. Heavy-duty zipper, padded shoulder strap. Holds up to 14 x 6.5 snare drum. PN: EBG146500BP

## REPLACEMENT PARTS



**Multi-Sustain Cymbal Felts**  
for 700 Series Cymbal Stands.  
PN: 3481-355X



**OS Cymbal Accentuators**  
for 950 Series and 750 Series  
Cymbal Stands.  
PN: 3480-355X



**Hi-Hat Clutch**  
for 950 Series and 750 Series  
Hi-Hat Stands.  
PN: 2680-346A



**Hi-Hat Clutch**  
for 700 Series Hi-Hat Stands.  
PN: 2681-327A



**Hi-Hat Clutch**  
for 320 and 300 Series  
Hi-Hat Stands.  
PN: 2670-346A



**Tri-Tonal Beater**  
for 950 and 750 Series Pedals  
PN: 4680-515A



# The best drums in the business are backed by the best warranty in the business.



A lifetime warranty on drum shells, one year on finishes and hoops and an incredible five years on hardware. All Mapex products are built in our ISO-9001 certified factory, which means you can count on superior quality — right out of the box.

MAPEX drums, hardware, stands and accessories, except as noted, purchased from an authorized MAPEX dealer, are warranted to the original retail purchaser against defective material and workmanship. Warranty coverage is not transferable and shall be valid by item and subject to terms and conditions indicated below. The original retail purchaser must include a copy of their original sales receipt or provide proof of sale by an authorized MAPEX dealer to activate warranty service without charge.

## **WARRANTY COVERAGE AND TIME PERIOD**

### **Shells**

Drum shells are covered under a limited lifetime warranty to the original retail purchaser against splitting, ply separation, material failure and going out of round as a result of manufacturing. Defects caused as a result of wear, handling, negligence, temperature, humidity, corrosive atmosphere or other external causes are not covered under this limited lifetime warranty.

### **Finish & Hoops**

Both lacquered finishes and hoops and all wrapped finishes are warranted to the original retail purchaser against defective material and workmanship for one (1) year from date of purchase. Defects caused as a result of wear, handling, negligence, temperature, humidity, corrosive atmosphere or other external causes are not covered.

### **Stands, Pedals & Hardware**

MAPEX stands, pedals and hardware are covered under a limited five (5) year warranty to the original purchaser against defective material and workmanship. Defects caused as a result of normal wear, handling, negligence, temperature, humidity, corrosive atmosphere or other external causes are not covered under this limited five (5) year warranty.

The following items are not covered under the MAPEX Warranty; heads, plating, pedal beaters, springs, snares, straps, normal wear and tear, sound or damage from shipping and transportation. The MAPEX Warranty is rendered void on all items that have been altered, modified or subjected to improper operation, misuse, neglect or exposure to extreme conditions.

## **OWNER'S RESPONSIBILITY**

### **To Obtain Warranty Service**

A Warranty return should be handled by any authorized MAPEX dealer from which the instruments were purchased. All repairs under terms of this Warranty must be handled by Mapex USA. Any instrument to be returned under this Warranty requires a Return Authorization Number shown on the outside of the carton and must be shipped prepaid. Mapex USA will then inspect and evaluate the extent of warranty coverage and notify dealer of claimant. Mapex USA will repair or replace, at its option, any instrument or part thereof, found to be defective and covered under terms of the MAPEX Warranty. Repaired instruments will be returned freight collect.

### **Warranty Limitations**

This Limited Warranty is made in lieu of all other warranties, either written or implied and is subject to the limitations contained herein. It is extended to the original retail purchaser only and not transferable. Proof of purchase is required. Under terms of this warranty, Mapex USA accepts no responsibility for incidental or consequential damages of any nature associated with the use of MAPEX products. This warranty gives you specific legal rights and you may have other rights which vary from state to state and could affect this warranty.





Product specifications described herein are subject to change without notice.

Due to limitations in photographic and lithographic processes, illustrated colors may vary slightly from actual colors offered.

Since wood grain patterns appear randomly in raw materials, wood grain depicted on product pictured will differ from actual product.

Cymbals are not included, except where indicated. Some items may only be available via special order, see dealer for details.

Black Panther™, ITS™, OS Cymbal Accentuators™, Tri-Nodal™ are trademarks of Mapex USA, Incorporated.

Remo® is a registered trademark of Remo, Inc.

Zildjian® is a registered trademark of Avedis Zildjian Company.

© 2009 Mapex USA, Incorporated. All rights reserved.

MCAT0109



[usa.mapexdrums.com](http://usa.mapexdrums.com)



PERFORMANCE IS EVERYTHING™