

PERFORMANCE 2011

BLACK PANTHER DRUM COLLECTION

SOUND THE WAY YOU'VE ALWAYS DREAMED

Based on its successfully distinctive snare drum series, Mapex has taken this highly progressive design philosophy, extended it across an entire collection of unique drums and created the Mapex Black Panther drum Series. Black Panther drums feature boldly unique shell formulas with specially designed bearing edge profiles to create distinctive tone and voice. With the Black Panther Series, Mapex speaks to the artistic side of every drummer by giving them drums that bring life to the sound they have only heard in their dreams.



BLACK PANTHER DRUM COLLECTION

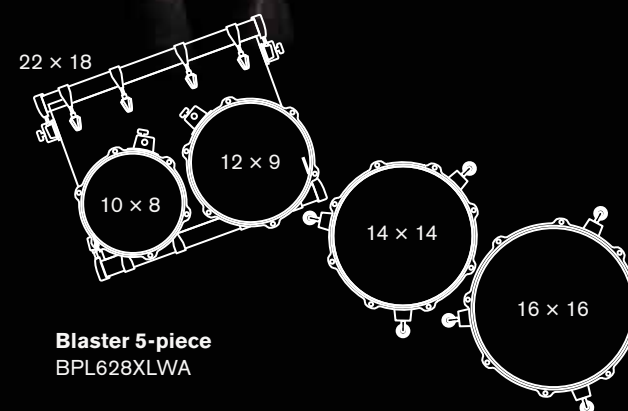
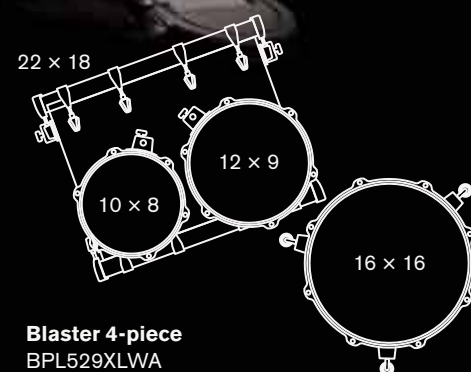
THE BLASTER

Mapex launches the Black Panther Drum Collection with The Blaster. What makes the Blaster unique from all other Mapex Drums is the precise selection and combination of shell design, shell materials, hoop and drum heads. Mapex started with a thin traditional 5.1mm American maple shell, added a 3.4mm walnut reinforcing ring and a 5:5 bearing edge with a rounded back cut. This “sound shaping” process produces an extremely focused explosive maple sound with a beautiful dark walnut undertone.



BLACK PANTHER DRUM COLLECTION
THE BLASTER

Black Panther drums are sold as four and five-piece component packs. Choose from add-on bass drums, floor toms and tom-toms to build the set you've always dreamed of.



Hardware and cymbals sold separately.



Traditional thin maple shells are known for their warm, explosive sound. Adding a partial walnut inner shell focuses the overall sound and adds a rich dark undertone to the maple.



The 5:5 rounded bearing edge places the head contact point in the middle of the shell, making for a perfect balance between head sound, shell vibration and overall volume and resonance.



The Mapex Sonic Saver™ hoop is another important ingredient to the Black Panther drum's overall sound. The shape of the hoop helps further focus the overall sound. Additionally, the hoop's unique shaping process creates a profile that reduces wear and tear to both sticks and hands while dramatically enhancing the response and feel of every rimshot. The 2.3mm Sonic Saver™ hoop successfully bridges the gap between flanged and die cast hoops.





THE VELVETONE

Mapex has long history of successfully combining different wood materials to make great sounding drum shells. Now Mapex has advanced this methodology with the Velvetone, which features a new maple and walnut shell formula. Rich, dark 3.4mm walnut plies at as a low-end buffer between warm interior and exterior maple plies. A specially selected 1:9 bearing edge allows the Remo® Ambassador Suede drumheads to resonate fully. The result is a drum that can whisper when needed, but can also bark at a moment's notice.

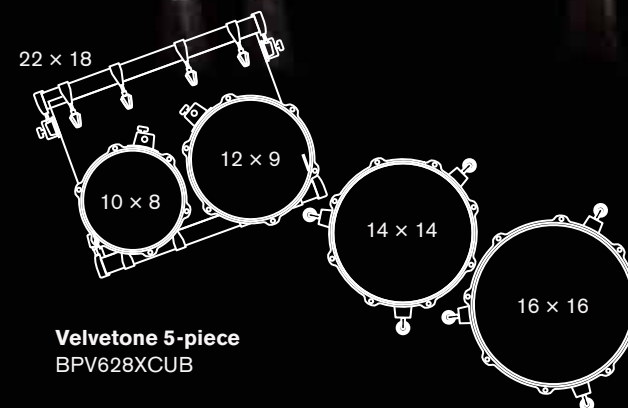
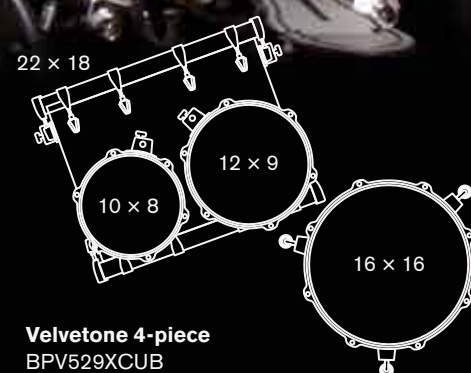
To make sure the Velvetone is as appealing to the eye as it is to the ear, Mapex has finished the drums with an Italian burl maple veneer with a high gloss, Butter Burst lacquer. The Velvetone is exclusively for the player that can distinguish between simply good and truly extraordinary.

BLACK PANTHER DRUM COLLECTION

BLACK PANTHER DRUM COLLECTION

THE VELVETONE

Black Panther drums are sold as four and five-piece component packs. Choose from add-on bass drums, floor toms and tom-toms to build the set you've always dreamed of.



Hardware and cymbals sold separately.



For a sound this special, using an "off the shelf" head was not an option. After hours of playing and recording, Mapex chose the Remo® Ambassador Suede drumhead. This head offers incredible response and provides a feel that many have described as "heavenly."



The foundation of the Velvetone shell is Mapex's ability to harmonize the different voices of the wood and have them perform with complimentary resonance and tone. The marriage of American maple and walnut bring to life a shell that reacts quickly, loud and long. To further ensure optimum sound, an extended 1:9 bearing edge is used on the shell. The drumhead seats at the furthest outer point of the shell allowing the drumhead to vibrate at its fullest.



The Mapex Sonic Saver™ hoop is another important ingredient to the Black Panther drum's overall sound. The shape of the hoop helps further focus the overall sound. Additionally, the hoop's unique shaping process creates a profile that reduces wear and tear to both sticks and hands while dramatically enhancing the response and feel of every rimshot. The 2.3mm Sonic Saver™ hoop successfully bridges the gap between flanged and die cast hoops.



SATURN BIRCH/WALNUT LIMITED EDITION

BEAUTY AND THE BEAST

The new Special Edition Saturn Birch/Walnut offers an extraordinary rendering of the distinctive Saturn sound. Mapex has taken the deep and rich sonic characteristics of walnut and combined them with the bright and articulate punch of birch. The result is a drum shell that projects the perfect fusion of depth and clarity.

This special edition six-piece shell pack is available in a beautiful transparent sienna fade over an exotic exterior burl veneer and is appointed with smoky black hardware.

SWR628SBKNWA

22 x 18 bass drum
10 x 8, 12 x 9 tom toms
14 x 14, 16 x 16 floor toms

Snare drum and other add-on components are also available.

Hardware and cymbals sold separately.




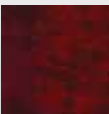




MERIDIAN MAPLE DRUM SETS

STILL LEADING THE WAY

The Mapex Meridian Maple continues to set the standard for beauty and performance in all-maple drum sets. Bright, resonant 7-ply maple shells come in a variety of beautifully lacquered finishes. Meridian's lightweight and easy-to-position Isolated Tom Mounting System (ITS), makes set-up quick and easy and optimizes resonance.

Available Finishes*:

-  Chestnut Burst RR
-  Candy Apple Burst RD
-  Cobalt Burst SQ
-  Transparent Cherry Red CV
-  Gloss Natural WL
-  Midnight Steel PE

MP628SRR Chestnut Burst Lacquer

- 22 x 18 bass drum
- 10 x 8, 12 x 9 tom toms
- 14 x 14, 16 x 16 floor toms
- 14 x 5.5 snare drum

Hardware packs and cymbals sold separately.





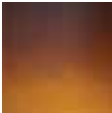
MERIDIAN SERIES BIRCH DRUMS

MORE DRUMS FOR YOUR DOLLAR

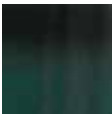
For an aggressive and cutting sound, the Meridian Birch is the clear choice in drums that are versatile enough to tackle a wide variety of musical styles.

For 2011, the price of 6-piece Meridian Birch shell pack has been reduced, making it easier for you to get into the big drum set you've always wanted.

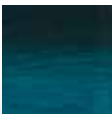
Available Finishes*:



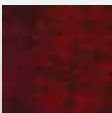
Amber Fade ua



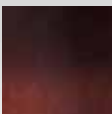
Black Forest Fade bo



Sapphire Fade si



Transparent Cherry Red cy



Transparent Walnut Fade wa

MR628SUA Amber Fade Lacquer

22 x 18 bass drum
10 x 8, 12 x 9 tom toms
14 x 14, 16 x 16 floor toms
14 x 5.5 snare drum

Hardware packs and
cymbals sold separately.



Some configurations may not be available in all finishes.
Please consult your retailer for product availability.



HORIZON HZB SERIES

START LIVING THE DREAM

The Mapex Horizon HZB Series has cutting edge features and sound quality that go unrivaled at its price point. The birch and basswood shells deliver rich, controlled sound and projected tone in any venue.

The Horizon HZB Series comes complete with a double tom holder and optional auxiliary cymbal placement, the Mapex exclusive Isolated Tom Mounting System (ITS), adjustable padded throne, low-profile die-cast cushioned bass drum claw hooks, instructional setup DVD and Remo® drum heads.

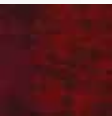
Horizon HZB Kits come in a variety of drum sets and shell packs. Dozens of add-on components are also available, meaning there's nothing stopping you from building the kit of your dreams.

HZB728SRV
7-piece Shell Pack
Rattan Yellow Lacquer

22 x 18 bass drum
8 x 7, 10 x 8, 12 x 9 tom toms
14 x 14, 16 x 16 floor toms
14 x 5.5 snare drum
includes tom holder,
tom arm and clamp

Hardware packs and
cymbals sold separately.

Available Finishes:



Transparent Cherry Red cv



Transparent Midnight Black mb



Rattan Yellow ry

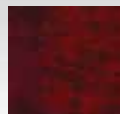
HORIZON HZB LIMITED

SIMPLY IRRESISTIBLE

With its seductive black hardware, the Horizon HZB Limited Edition presents one of Mapex's hottest drum sets with a striking, alternative look.

The HZB Limited Edition features the same spectacular birch/basswood hybrid shells for robust sound and rich tone and is available in two beautiful high-gloss transparent lacquer finishes. The six-piece drum set includes a full complement of Mapex 500 Series hardware.

Available Finishes:



Transparent Cherry Red cv



Transparent Midnight Black mb

HZB6295BMB 6-piece Drum Set Transparent Midnight Black Lacquer

22 x 18 bass drum
8 x 7, 10 x 8, 12 x 9 tom toms
16 x 16 floor tom
14 x 5.5 snare drum
includes 500 Series Boom Stand,
Cymbal Stand, Snare Stand, Hi-hat
Stand, Bass Drum Pedal, AC904
Mult-clamp with tom arm.

Cymbals sold separately.



HORIZON HZB BIG CITY KIT

BIG CITY PLAYERS NEED BIG CITY DREAMS

Every busy player needs a set for gigs where getting in and out quickly is important, but sounding your best is critical. The Mapex Horizon HZB Big City Kit is ideal for clubs and events where space is tight and loading and unloading needs to be quick and efficient.

Once you're playing, you'll be completely knocked out with the tone and response that the birch and basswood shells deliver. From subtle brush work to lively pop licks, the Big City Kit performs flawlessly.

The Horizon HZB Big City Kit is sold as a five-piece shell pack and is available in classic lacquer finishes. The 18-inch kick drum features a distinctively designed retro-style front white head.

Available Finishes:



Transparent Cherry Red cv



Transparent Midnight Black mb



Rattan Yellow ry

HZB581SCV
5-piece Shell Pack
Transparent Cherry Lacquer

18 x 14 bass drum
10 x 8, 12 x 8 tom toms
14 x 14 floor tom
14 x 5 snare drum
Double Tom Holder

Cymbals and Hardware
sold separately.





VR5295USATCZBL
5-piece Drum Set
Gloss Black Covering

22 x 16 bass drum
10 x 8, 12 x 9 tom toms
16 x 16 floor tom
14 x 5.5" snare drum

Double Tom Holder with boom arm,
330 Series Boom Stand, Cymbal
Stand, Snare Stand, Hi-hat Stand and
Bass Drum Pedal, T250A Throne,

Cymbals: 12-inch Splash, 14-inch
Hi-hats, 16-inch Crash, 18-inch Ride

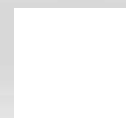
Available Finishes:



Black bl



Burgundy by



Snow White sw



Dark Indigo di

VOYAGER DRUM SETS

A NEW (AND BETTER) STAR IS BORN

Your voyage into drumming begins the moment you open the box. Unmatched tone and resonance are found in the basswood shells of the Voyager Series Set, which are finished with a durable and beautiful high-gloss covering.

The Voyager Series VR5295USATCZ comes with everything you need to start playing today – SRO drum sizes 10", 12", 16" floor, 22" bass drum and 14"x5.5" snare drum, durable 330 hardware, Mapex cymbals and an adjustable throne.

Because the Mapex reputation is to give you more, an additional boom arm with a 12-inch splash cymbal is also included, giving you even more sound to work with.

Remo drumheads come on all drums, including a self muffling bass drum batter head. Included is a setup DVD featuring the Mapex Global Drum Educator Dom Famularo and some cool Play-Along tracks.

Choose the Mapex Voyager and start your drumming voyage start with more instead of less!

Raptor

DIRECT DRIVE PEDALS

DIGITAL PERFORMANCE. ANALOG FEEL. AFFORDABLE PRICE.

Mapex introduces another bird of prey – the Raptor Direct Drive Pedal. The Raptor has all of the power, stability and security you would expect from a direct drive pedal, but has the feel that you can only get from a chain pedal.

In addition to the unique design of the Direct Driver linkage, Mapex has included some of the advanced technology found on the Mapex Falcon pedal such as a smaller pedal footprint, a torque-free spring mechanism and the unique Falcon beater with interchangeable weighted inserts. This combined formula results in a pedal with incredible flexibility and a feel that's unbelievably responsive and fluid.

The new Mapex Raptor is available in a single and a double model. Once you play it, you'll understand immediately why the Mapex Raptor is the only pedal with direct drive appeal and a chain drive feel.

Raptor Double Pedal (P900TW)

Raptor Single Pedal (P900)

FALCON

DIRECT DRIVE ACCESSORY PACK

The same engineering that went into developing the direct drive technology for the Raptor pedal can now be added to your existing Falcon Pedal. Pick up the Direct Driver Linkage Accessory Kit and with the turn of two screws, quickly add the precision and power of direct drive to your Falcon.

Falcon Direct Drive Pack for Single Pedal (P1000D)
Falcon Direct Drive Pack for Double Pedal (P1000DTW)

*Adding direct drive to your Falcon Pedal takes only minutes.
Simply remove the two screws from the existing chain mechanism
and replace the chain with the Direct Driver.*

FOUR-POINT SUPPORT THRONES

THE BEST SEAT IN THE HOUSE

Playing and sounding your best is about more than your drums. Feeling comfortable and secure while you play is every bit as important. The new Mapex T770 and T775 Four Point Support Thrones provide comfort and stability for every gig.

The heavy-duty four-leg design keeps you completely stable and perfectly balanced while playing. The threaded steel spindle allows precise height adjustment from 18 to 26 inches. A memory lock secures your desired seat height so you're completely comfortable every time you play.



T775 Saddle Support Throne

T770 Round Support Throne

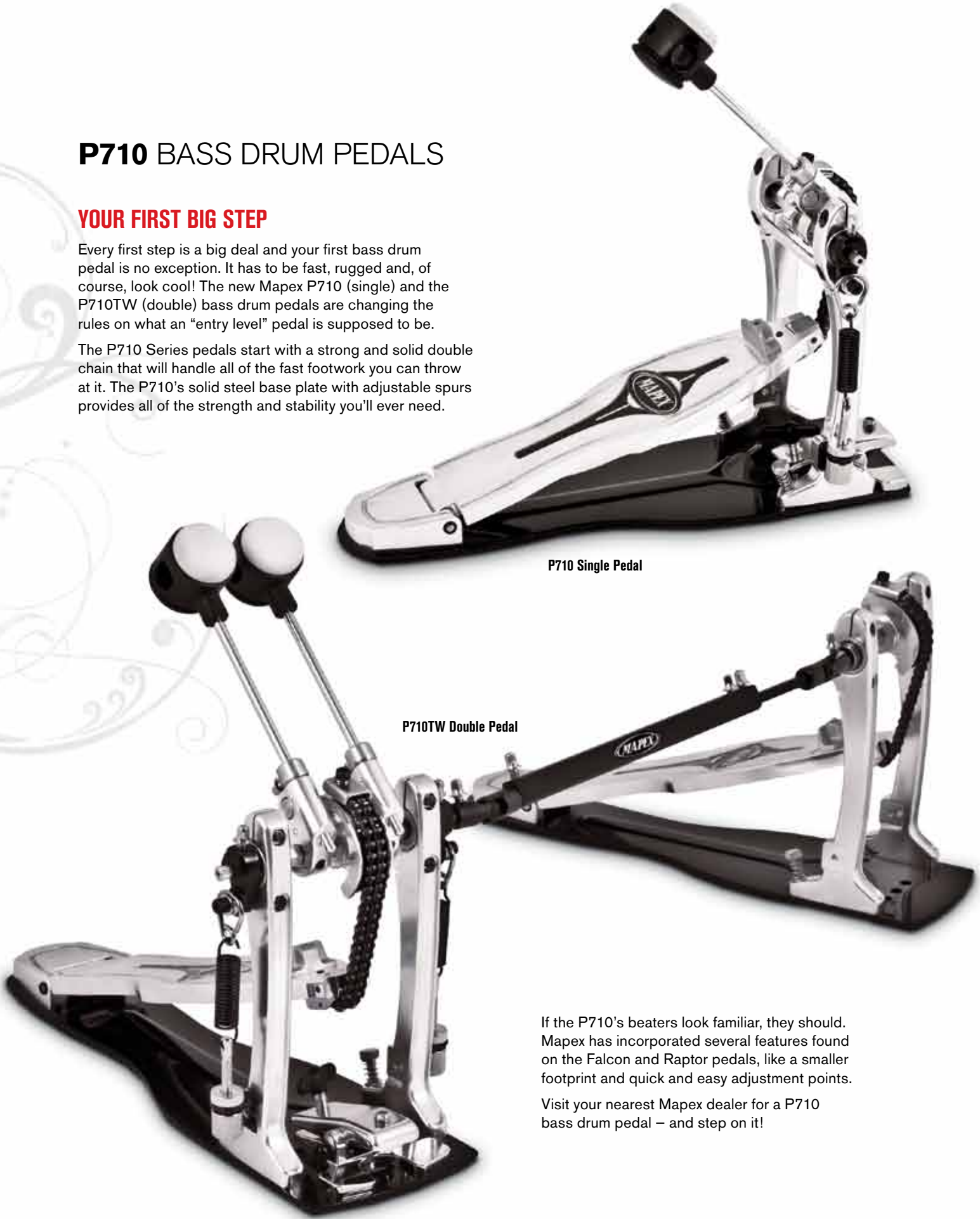
Choose from the 14-inch round or the 17-inch wide saddle-style seat. Both have a 4-inch cushion. The removable backrest can be adjusted horizontally and vertically to provide critical lower back support. When it's your time to perform, make sure you have the best seat in the house with the Mapex T770 and T775 Four Point Support Thrones.

P710 BASS DRUM PEDALS

YOUR FIRST BIG STEP

Every first step is a big deal and your first bass drum pedal is no exception. It has to be fast, rugged and, of course, look cool! The new Mapex P710 (single) and the P710TW (double) bass drum pedals are changing the rules on what an "entry level" pedal is supposed to be.

The P710 Series pedals start with a strong and solid double chain that will handle all of the fast footwork you can throw at it. The P710's solid steel base plate with adjustable spurs provides all of the strength and stability you'll ever need.



P710 Single Pedal

P710TW Double Pedal

If the P710's beaters look familiar, they should. Mapex has incorporated several features found on the Falcon and Raptor pedals, like a smaller footprint and quick and easy adjustment points. Visit your nearest Mapex dealer for a P710 bass drum pedal – and step on it!

BLACK PANTHER SNARE DRUMS



BLASTER

8.4mm shell constructed from
5.1mm maple shell and
3.4mm walnut reinforcing rings
13" x 7"
5:5 bearing edge
For an ear-shattering loud and aggressive
response, tune this drum to a little higher pitch.
BPML3700LNWU



BLADE

1mm steel shell
14" x 5 1/2"
traditional 45° bearing edge
A visually sleek and alluring instrument
with razor-sharp tone that carves deeply
into any groove.
BPST4551LN



BRASS CAT

1.2mm brass shell
14" x 5 1/2"
traditional 45° bearing edge
Slightly softer than a steel snare. This
drum produces an aggressive sound
that's incredibly smooth.
BPBR4551ZN



BLACK WIDOW

5.1mm maple shell
14" x 5"
5:5 bearing edge
This full-bodied, versatile drum features
extreme sensitivity and a dark, dry tone.
BPML4500LNTB

See the entire selection of Mapex Drums and Hardware at usa.mapexdrums.com

facebook.com/mapex.usa

twitter.com/MapexDrumsUSA

YouTube.com/MapexDrumsUSA

mapex@mapexdrums.com

Pictured on front cover, Gregg Bissonette at Sound Kitchen Studios, Nashville, TN.
© Copyright 2011 KHS America, Inc.



PERFORMANCE IS EVERYTHING™