

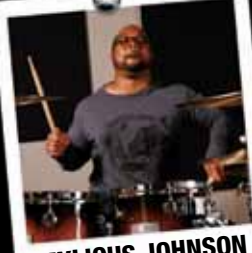


TODAY'S BEST DRUMMERS PREFER MAPEX



DOM FAMULARO
Drumming's Global Ambassador

"Where ever in the world I might be, Mapex drums provide me the voice to be heard. Manufacturing integrity and excellence are the Mapex standard ingredients".



MYLIOUS JOHNSON
Jovanotti, Tiziano Ferro, Kid Guch

"Mapex is not just a company, it's a family. Mapex cares about its artist as people and they are organized to handle all of the needs worldwide. Combine all of this with the fact the drums are smoking!"



AQUILES PRIESTER
Hangar

"When it comes to getting a great drum sound, Mapex is my reference. I does not matter what series of Mapex drums I use I know exactly the sound each one delivers. As a drummer I want to leave my signature every time I play and the pen I always use is made by Mapex".



WALFREDO REYES JR
Lindsey Buckingham, Santana

"In the recording studio or in live performances Mapex makes my life easier! The Mapex drums along with the Mapex hardware, pedals, thrones and Black Panther snares give me the best combination for making the best music. Once the music begins and you start playing Mapex the hardest thing is to stop!"



CHRIS ADLER
Lamb of God

"I can't afford to settle for second best. When I'm on the road or in the studio I'm under pressure to get things right. Mapex drums are the tools that allow me to be the best I can be".



CHRIS PENNIE
Coheed and Cambria

"Knowing I have amazing equipment to play every night makes it easy for me to focus on the music."



STEVE WHITE
Paul Weller, The Players

"Precision, consistency, style and quality are a part of every Mapex drum and the Mapex sound. A sound that dreams are made of".



WILL CALHOUN
Living Colour

"The people, product and the service at Mapex are first class. The variety of sounds available from the Black Panther snares along with the availability drum sizes and finishes allow every drummer the opportunity to be unique and individual. Mapex has it like no other drum company."



WALDO MADERA
Ricky Martin, Juanes

"It's SO important to have an instrument that will respond to all your needs in any musical situation. No wonder, I haven't been able to keep my hands off my MAPEX drums for the past 16 years."



NICK D'VIRGILIO
Tears for Fears

"I always have the utmost confidence in my sound when I go into a session or on a gig. What is even more amazing to me is that drums keep getting better and better. To me MAPEX is just the best!"



LIBERTY DEVITTO
Independent

"The 'MAPEX' logo stands for sound and strength in drums, and a family of dedicated people that stand behind every 'MAPEX' drum set with PRIDE and PASSION."



GREGG BISSONETTE
International Recording & Touring Artist

"Mapex drums are the finest drums for me on the great planet Earth!"



PERFORMANCE IS EVERYTHING

Since 1996, Mapex has been helping drummers define their sound. Featuring a wide range of drums and hardware for everyone from beginner to professional, Mapex is ***THE*** choice for players throughout the world. Mapex Drums: ***Performance is Everything.***

Drumsets

Black Panther	2
Orion.....	8
Saturn.....	12
Meridian Maple	16
Meridian Birch.....	20
Horizon HZB.....	22
Horizon HZB Big City Kit.....	24
Horizon Fastpack	25
Horizon HX.....	26
Voyager.....	28

Snares

Black Panther.....	30
MPX	36

Hardware	38-51
----------------	-------

Accessories	52
-------------------	----



BLACK PANTHER DRUM COLLECTION

SOUND THE WAY YOU'VE ALWAYS DREAMED

Based on its successfully distinctive snare drum series, Mapex has taken this highly progressive design philosophy, extended it across an entire collection of unique drums and created the Mapex Black Panther drum Series. Black Panther drums feature boldly unique shell formulas with specially designed bearing edge profiles to create distinctive tone and voice. With the Black Panther Series, Mapex speaks to the artistic side of every drummer by giving them drums that bring life to the sound they have only heard in their dreams.



BLACK PANTHER DRUM COLLECTION

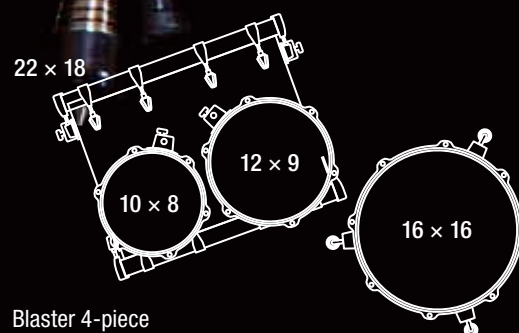
THE BLASTER

Mapex launches the Black Panther Drum Collection with The Blaster. What makes the Blaster unique from all other Mapex Drums is the precise selection and combination of shell design, shell materials, hoop and drum heads. Mapex started with a thin traditional 5.1mm American maple shell, added a 3.4mm walnut sound shaping ring and a 5:5 bearing edge with a rounded back cut. This “sound shaping” process produces an extremely focused maple sound with a beautiful dark walnut undertone.



Black Panther drums are sold as four and five-piece component packs. Choose from add-on bass drums, floor toms and tom-toms to build the set you've always dreamed of.

SCAN FOR INFORMATION



Blaster 4-piece
BPL529XLWU



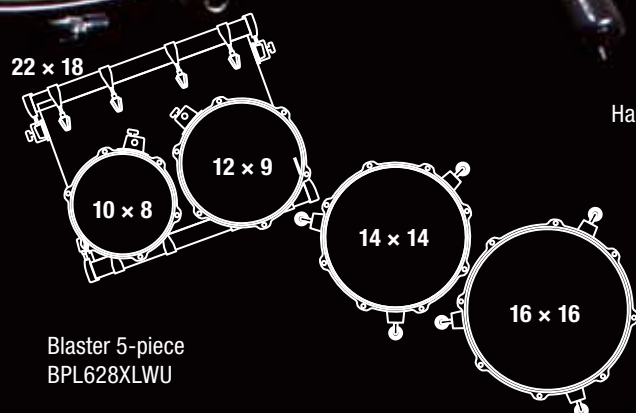
Traditional thin maple shells are known for their warm sound. Adding a walnut sound focus ring focuses the overall sound and adds a rich dark undertone to the maple.



The 5:5 rounded bearing edge places the head contact point in the middle of the shell, making for a perfect balance between head sound, shell vibration and overall volume and resonance.



The Mapex Sonic Saver™ hoop is another important ingredient to the Black Panther drum's total sound. The shape of the hoop helps further focus the overall sound. The unique shape of the hoop creates a profile that reduces wear and tear to both sticks and hands while dramatically enhancing the response and feel of every rimshot. The 2.3mm Sonic Saver™ hoop successfully bridges the gap between flanged and die cast hoops.



Hardware and cymbals sold separately.

Blaster 5-piece
BPL628XLWU

BLACK PANTHER DRUM COLLECTION

THE VELVETONE

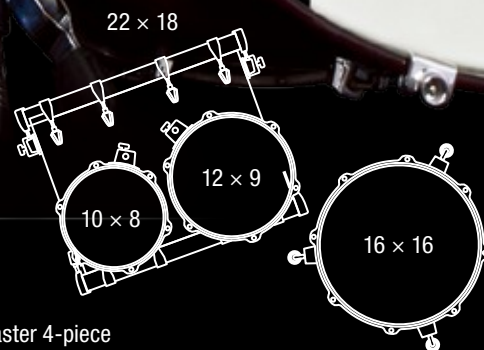
Mapex has a long history of successfully combining different wood materials to make great sounding drum shells. Now Mapex has advanced this methodology with the Velvetone, which features a new maple and walnut shell formula. Rich, dark 3.4mm walnut plies act as a low-end buffer between warm interior and exterior maple plies. A specially selected 1:9 bearing edge allows the Remo® Ambassador Suede drumheads to resonate fully. The result is a drum that can whisper when needed, but can also roar at a moment's notice.

To make sure the Velvetone is as appealing to the eye as it is to the ear, Mapex has finished the drums with an Italian burl maple veneer with a high gloss, Butter Burst lacquer. The Velvetone is for every player that can distinguish between simply good and truly extraordinary.



Black Panther drums are sold as four and five-piece component packs. Choose from add-on bass drums, floor toms and tom-toms to build the set you've always dreamed of.

Hardware and cymbals sold separately.



Blaster 4-piece
BPV529XCUB



Velvetone 5-piece
BPV628XCUB



For a sound this special, using an “off the shelf” head was not an option. After hours of playing and recording, Mapex chose the Remo® Ambassador Suede drumhead. This head offers incredible response and provides a feel that many have described as “heavenly.”



The marriage of American maple and walnut brings to life a shell that reacts quickly, loud and long. To further ensure optimum sound, an extended 1:9 bearing edge is used on the shell. The drumhead seats at the furthest outer point of the shell allowing the drumhead to vibrate at its fullest.



The Mapex Sonic Saver™ hoop is another important ingredient to the Black Panther drum's total sound. The shape of the hoop helps further focus the overall sound. The unique shape of the hoop creates a profile that reduces wear and tear to both sticks and hands while dramatically enhancing the response and feel of every rimshot. The 2.3mm Sonic Saver™ hoop successfully bridges the gap between flanged and die cast hoops.



Gregg Bissonette
International Recording and Touring Artist

The Orion 8-piece configuration shown in Cosmic Cloud Burst finish with black nickel plated hardware.

ORION

The Mapex Orion Series sets the standard for high-end maple drums. Thin North American shells produce outstanding resonance and full body tone while the meticulous hand-rubbed lacquer finishes ensures that the Orion Series looks as spectacular as it sounds. In order to satisfy the discerning needs of the musician, the Orion Series is offered in component fashion, thus allowing the artist to choose exactly the kit that best suits his or her style.



The Mapex I.T.S. System allows the shell to vibrate freely, allowing for maximum projection and resonance.



Orion floor toms feature the patented I.T.S. Isolated Tom Mount System for additional resonance.



The Orion's non-penetrating I.T.S. telescopic bass drum spurs allow the shell to vibrate freely for a thunderous low end.



Mapex's low mass lugs are secured to the shell via only one point of penetration, resulting in additional tone and enhanced resonance.



All Orion Series bass drums feature cushioned, low-profile die-cast claw hooks.



All Orion drums are equipped with Remo® drum heads made in the USA.

Additional appointments include:

- » 7-ply, 7.5mm bass drums, 6.1mm toms, North American maple toms with exotic burl maple exterior ply
- » Eight coat, hand applied deep gloss lacquer finish
- » Spring-loaded floor tom legs
- » 2.3mm Steel Mapex Powerhoops



The Orion 7-piece Custom configuration shown in the Wine Burl Burst finish.

BASS DRUM	
BMB1814C/BN	18" x 14"
BMB1814CA/BNA	18" x 14", no mount
BMB1816C/BN	18" x 16"
BMB1816CA/BNA	18" x 16", no mount
BMB2014C/BN	20" x 14"
BMB2014CA/BNA	20" x 14", no mount
BMB2016C/BN	20" x 16"
BMB2016CA/BNA	20" x 16", no mount
BMB2018C/BN	20" x 18"
BMB2018CA/BNA	20" x 18", no mount
BMB2020CA/BNA	20" x 20", no mount
BMB2216C/BN	22" x 16"
BMB2216CA/BNA	22" x 16", no mount
BMB2218C/BN	22" x 18"
BMB2218CA/BNA	22" x 18", no mount
BMB2220CA/BNA	22" x 20", no mount
BMB2416CA/BNA	24" x 16", no mount
BMB2418CA/BNA	24" x 18", no mount
BMB2420CA/BNA	24" x 20", no mount
BMGB181C/BN	18" x 16" Gong bass

TOM TOM	
BMT807BC/BN	8" x 7"
BMT808BC/BN	8" x 8"
BMT1007C/BN	10" x 7"
BMT1008C/BN	10" x 8"
BMT1009C/BN	10" x 9"
BMT1207C/BN	12" x 7"
BMT1208C/BN	12" x 8"
BMT1209C/BN	12" x 9"
BMT1210C/BN	12" x 10"
BMT1307C/BN	13" x 7"
BMT1309C/BN	13" x 9"
BMT1310C/BN	13" x 10"
BMT1311C/BN	13" x 11"
BMT1410C/BN	14" x 10"
BMT1411C/BN	14" x 11"
BMT1412C/BN	14" x 12"
BMT1512C/BN	15" x 12"
BMT1513C/BN	15" x 13"
BMT1613C/BN	16" x 13"
BMT1614C/BN	16" x 14"

FLOOR TOM	
BMF1411C/BN	14" x 11"
BMF1412C/BN	14" x 12"
BMF1414C/BN	14" x 14"
BMF1513C/BN	15" x 13"
BMF1515C/BN	15" x 15"
BMF1613C/BN	16" x 13"
BMF1614C/BN	16" x 14"
BMF1616C/BN	16" x 16"
BMF1816C/BN	18" x 16"

SNARE DRUM	
BMS3600C/BN	13" x 6"
BMS4550C/BN	14" x 5.5"
BMS4650C/BN	14" x 6.5"
BMS4700C/BN	14" x 7"

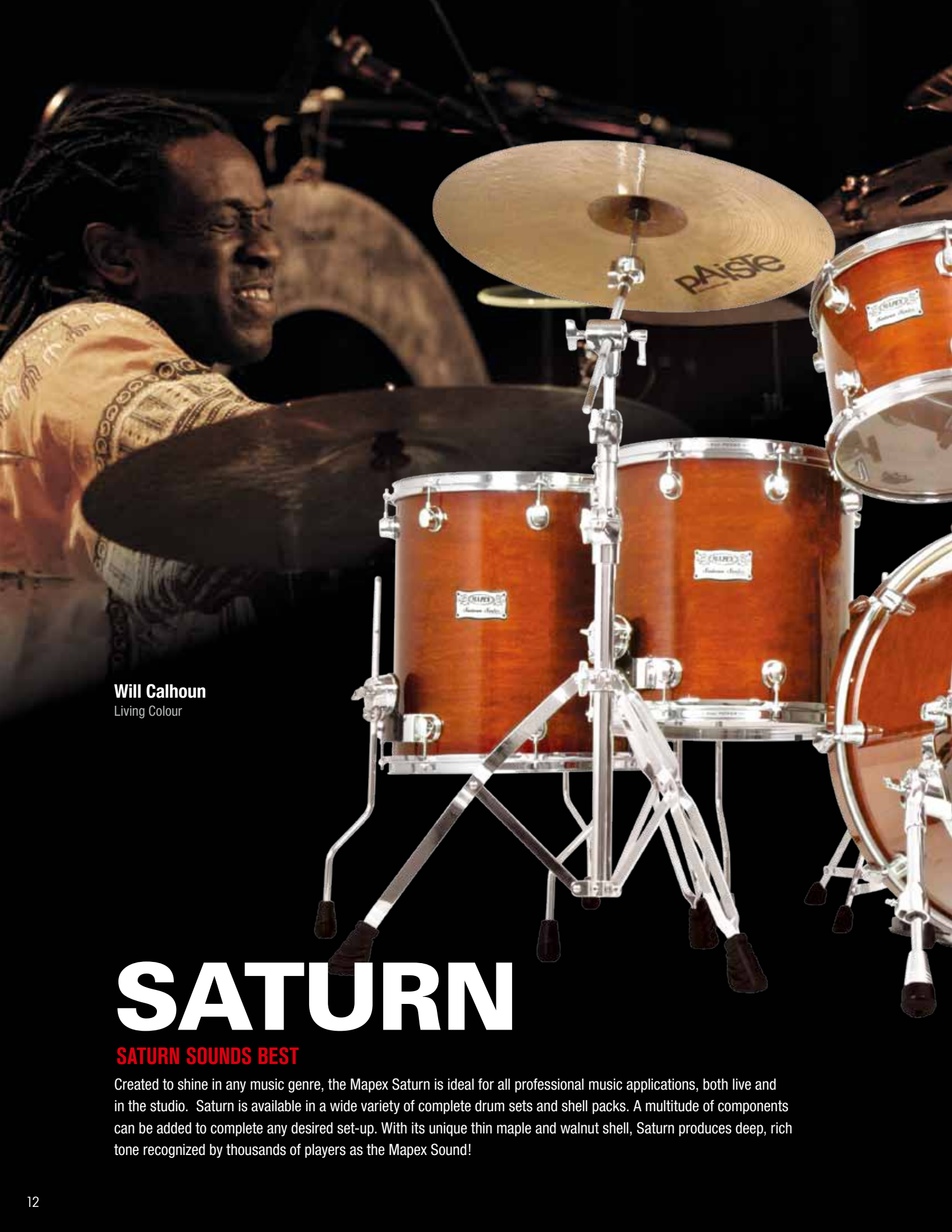
C: Chrome
BN: Black Chrome

Orion components can be ordered with chrome or black hardware.



	Cosmic Cloud Burst (SL)
	Ebony Burst (TK)
	Wine Burl Burst (TY)
	Coffee Burst (TO)
	Butter Burst (UB)
	Blue Mist Burst (TN)
	Imperial Burst (TL)
	Teal Burst (TU)
	Gloss Natural (NL)
	Cinnamon Fade (FS)
	Transparent Red (TR)

The Orion 6-piece Custom configuration shown in the Ebony Burst finish with black nickel plated hardware.



Will Calhoun
Living Colour

SATURN

SATURN SOUNDS BEST

Created to shine in any music genre, the Mapex Saturn is ideal for all professional music applications, both live and in the studio. Saturn is available in a wide variety of complete drum sets and shell packs. A multitude of components can be added to complete any desired set-up. With its unique thin maple and walnut shell, Saturn produces deep, rich tone recognized by thousands of players as the Mapex Sound!



SW728SUCWT

Transparent Walnut Lacquer

22 x 20 bass drum

8 x 7, 10 x 8, 12 x 9 tom toms

14 x 12, 16 x 14 floor toms

14 x 5.5 snare drum

Shown with 750A series hardware.
Hardware and cymbals sold separately.

Additional appointments include:

- » 8-ply / 7.5mm bass drums, 6-ply / 5.1mm toms and snares, two interior walnut plies, four exterior maple plies
- » Eight coat, hand applied deep gloss lacquer finish
- » Exclusive Isolated Tom Mounting System™ on all toms
- » Exclusive Isolated Tom Mounting System™ on bass drums
- » Spring-loaded floor tom legs
- » Low mass, single-point-of-contact lugs
- » Low profile, cushioned, die cast bass drum claw hooks
- » 2.3mm Steel Mapex Powerhoops
- » Remo® Emperor batter heads on all toms, Remo® Ambassador heads on snare and Remo® Powerstroke 3 on bass drums

SATURN BIRCH/WALNUT SPECIAL EDITION

BEAUTY AND THE BEAST

The Special Edition Saturn Birch/Walnut offers an extraordinary rendering of the distinctive Saturn sound. Mapex has combined the rich sonic characteristics of walnut with the bright, articulate punch of birch to create a sound the projects the perfect fusion of depth and clarity. This special edition five-piece shell pack is available in a deep transparent sienna fade over an exotic exterior burl veneer and stunning yellow ocher sparkle burst. Both finishes are appointed with black-nickel plated hardware.



SWR628XSBKNWA - (Only available in WA finish)

22 x 18 bass drum, 10 x 8, 12 x 9 tom toms, 14 x 14, 16 x 16 floor toms, TH684 tom arms and AC910 clamps x 2, 7-ply / 7.85mm bass drums, 7-ply / 7.1mm toms and snares, two interior walnut plies, four exterior maple plies

Snare, hardware and cymbals sold separately.

CONFIGURATION	HW COLOR	BASS DRUM	TOM TOMS	FLOOR TOMS	SNARE DRUM	TOM HOLDER	TOM STAND
Plus Bass Fusion Pop 22 SW728SUC	Chrome	22 x 20	8 x 7 10 x 8 12 x 9	14 x 12 16 x 14	14 x 5.5		TS960A TS500
Studioease SW628SUC	Chrome	22 x 18	10 x 8 12 x 9	14 x 14 16 x 16	14 x 5.5	TH682	
Standard SW525SUC	Chrome	22 x 18	12 x 9 13 x 10	16 x 16	14 x 5.5	TH682	
SRO Pop/Rock (no snare) SW529XUC	Chrome	22 x 18	10 x 8 12 x 9	16 x 16		TH682	
Jazz (no snare) SW504XUC	Chrome	20 x 18	10 x 8 12 x 9	14 x 14		TH682	

BASS DRUM	
SWB1814UC/BN	18" x 14"
SWB1816UC/BN	18" x 16"
SWB2014UC/BN	20" x 14"
SWB2016UC/BN	20" x 16"
SWB2018UC/BN	20" x 18"
SWB2216UC/BN	22" x 16"
SWB2216UCA/BN	22" x 16", no mount
SWB2218UC/BN	22" x 18"
SWB2220UCA/BN	22" x 20", no mount
SWB2418UC/BN	24" x 18", no mount
SWB2420UC/BN	24" x 20", no mount
SWGB1816UC/BN	18" x 16" Gong Bass

FLOOR TOM	
SWF1412UC/BN	14" x 12"
SWF1414UC/BN	14" x 14"
SWF1513UC/BN	15" x 13"
SWF1515UC/BN	15" x 15"
SWF1614UC/BN	16" x 14"
SWF1616UC/BN	16" x 16"
SWF1816UC/BN	18" x 16"

SNARE DRUM	
SWS3550UC/BN	13" x 5.5"
SWS4550UC/BN	14" x 5.5"
SWS4650UC/BN	14" x 6.5"
SWS4700UC/BN	14" x 7"

TOM TOM	
SWT807UC/BN	8" x 7"
SWT808UC/BN	8" x 8"
SWT1055UC/BN	10" x 5.5"
SWT1007UC/BN	10" x 7"
SWT1008UC/BN	10" x 8"
SWT1009UC/BN	10" x 9"
SWT1206UC/BN	12" x 6"
SWT1208UC/BN	12" x 8"
SWT1209UC/BN	12" x 9"
SWT1210UC/BN	12" x 10"
SWT1310UC/BN	13" x 10"
SWT1311UC/BN	13" x 11"
SWT1407UC/BN	14" x 7"
SWT1410UC/BN	14" x 10"
SWT1411UC/BN	14" x 11"
SWT1412UC/BN	14" x 12"
SWT1512UC/BN	15" x 12"
SWT1513UC/BN	15" x 13"
SWT1613UC/BN	16" x 13"
SWT1614UC/BN	16" x 14"

UC: Chrome
BN: Black-Nickel Chrome

Saturn hardware components can be ordered with chrome (C) or black-nickel (BN) plated hardware.

	Blue Galaxy Sparkle (TT)
	Supernova Red Burst (SV)
	Green Apple Bust (TG)
	Galaxy Burst (TJ)
	Root Beer Burst (TX)
	Transparent Cherry Burst (RT)
	Arctic White (OW)
	Transparent Walnut (WT)
	Transparent Black (TB)
	Gloss Natural (NL)
	Transparent Cherry Red (CY)
	Cherry Sparkle (RL)
	Ocean Blue Sparkle (OP)
	Sterling Sparkle (IL)



SWR628XSBNYH - (Only available in YH finish)

22 x 18 bass drum, 10 x 8, 12 x 9 tom toms, 14 x 14, 16 x 16 floor toms, TH684 tom arms and AC910 clamps x 2, 7-ply / 7.85mm bass drums, 7-ply / 7.1mm toms and snares, two interior walnut plies, four exterior maple plies

Snare, hardware and cymbals sold separately.

Waldo Madera
Ricky Martin, Juanes



MP628SRR

Chestnut Burst Lacquer, 22 x 18 bass drum, 10 x 8, 12 x 9 tom toms, 14 x 14, 16 x 16 floor toms, 14 x 5.5 snare drum, TH676 tom holder

Shown with 700 series hardware. Hardware and cymbals sold separately.

MERIDIAN MAPLE

STILL LEADING THE WAY

The Mapex Meridian Maple continues to set the standard for beauty and performance in all-maple drum sets. Bright, resonant 7-ply maple shells come in a variety of beautifully lacquered finishes. Meridian's lightweight and easy-to-position Isolated Tom Mounting System (ITS), makes set-up quick and easy and optimizes resonance.



All Meridian toms feature the I.T.S. Isolated Tom Mount System.



Newly designed lug with smaller footprint for lower overall mass.



Meridian series bass drum tom holders include a socket for an additional boom arm (B74).



All Meridian bass drums have cushioned, recessed bass drum claws.



Meridian floor toms feature spring-cushioned floor tom legs.



All Meridian Maple drums are equipped with Remo® UT Pinstripe drum heads on the toms only.

Additional features include:

- » 7-ply all maple, 5.8mm toms and snares, 7.2mm bass drum
- » 2.3mm Mapex Powerhoops
- » Eight coat, hand-sanded, high gloss lacquer finish





MP529SR0

Candy Apple Burst Lacquer, 22 x 18 bass drum, 10 x 8, 12 x 9 tom toms, 16 x 16 floor toms, 14 x 5.5 snare drum, TH676 tom holder

Shown with 700 series hardware. Hardware and cymbals sold separately.

CONFIGURATION	BASS DRUM	TOM TOMS	FLOOR TOMS	SNARE DRUM	TOM HOLDER	TOM HOLDER
MP525S	22" x 18"	12" x 9", 13" x 10"	16" x 16"	14" x 5.5"	TH676	RR, RO, SQ, NL, PE, CY
MP529S	22" x 18"	10" x 8", 12" x 9"	16" x 16"	14" x 5.5"	TH676	RR, RO, SQ, NL, PE, CY
MP628S	22" x 18"	10" x 8", 12" x 9"	14" x 14" 16" x 16"	14" x 5.5"	TH676	RR, RO, SQ, NL, PE, CY
MP504S	20" x 18"	10" x 8", 12" x 9"	14" x 14"	14" x 5.5"	TH676	MB, NL
MP481S	18" x 14"	12" x 8"	14" x 14"	14" x 5.5"	TH654, AC909	RR, CY, MB, NL, SQ

BASS DRUM	
MPB1814	18" x 14"
MPB1816	18" x 16"
MPB2016	20" x 16"
MPB2018	20" x 18"
MPB2216	22" x 16"
MPB2218	22" x 18"
MPB2218A	22" x 18", no
MPB2220A	22" x 20", no mount
MPB2418	24" x 18", no mount
MPB2420	24" x 20", no mount

TOM TOM	
MPT804	8" x 4"
MPT807	8" x 7"
MPT808	8" x 8"
MPT1055	10" x 5.5"
MPT1007	10" x 7"
MPT1008	10" x 8"
MPT1009	10" x 9"
MPT1206	12" x 6"
MPT1208	12" x 8"
MPT1209	12" x 9"
MPT1210	12" x 10"
MPT1309	13" x 9"
MPT1310	13" x 10"
MPT1311	13" x 11"
MPT1407	14" x 7"
MPT1410	14" x 10"
MPT1411	14" x 11"
MPT1412	14" x 12"
MPT1608	16" x 8"
MPT1613	16" x 13"
MPT1614	16" x 14"

FLOOR TOM	
MPF1412	14" x 12"
MPF1414	14" x 14"
MPF1515	15" x 15"
MPF1613	16" x 13"
MPF1614	16" x 14"
MPF1616	16" x 16"
MPF1816	18" x 16"

SNARE DRUM	
MPS4556	14" x 5.5"
MPS4656	14" x 6.5"



Chestnut Burst
(RR)



Midnight Steel
(PE)



Cobalt Burst
(SQ)



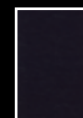
Candy Apple Burst
(RO)



Gloss Natural
(NL)



Transparent
Cherry Red
(CY)



Transparent
Midnight Black
(MB)



MP481SNL

Gloss Natural, 18 x 14 bass drum, 12 x 8 tom toms, 14 x 14 floor tom, 14 x 5.5 snare drum, TH654, AC909

Shown with 700 series hardware. Hardware and cymbals sold separately.

MERIDIAN BIRCH

MORE DRUMS FOR YOUR DOLLAR

For an aggressive and cutting sound, the Meridian Birch is the clear choice in drums that are versatile enough to tackle a wide variety of musical styles.

Chris Pennie
Coheed and Cambria



MR6285CY Drum set with hardware

Transparent Cherry Red, 22 x 18 bass drum, 10 x 8, 12 x 9 tom toms, 14 x 14, 16 x 16 floor toms, 14 x 5.5 snare drum, TH676 tom holder

Additional appointments include:

- » 6-ply all birch, 7.2mm toms and snares, 7.2mm bass drum
- » Eight coat, hand-sanded, high gloss lacquer finish
- » Low-profile, recessed bass drum claws with cushioning gasket

Sold with 700 series hardware. Hardware and cymbals sold separately.



Scan to watch Chris Pennie playing on his Meridian Birch drum set.

CONFIGURATION	BASS DRUM	TOM TOMS	FLOOR TOMS	SNARE DRUM	TOM HOLDER	CYMBAL STAND	BOOM STAND	SNARE STAND	HI-HAT STAND	PEDAL	TOM HOLDER
Studioease Shell Pack MR628S	22 x 18	10 x 8 12 x 9	14 x 14 16 x 16	14 x 5.5	TH676						CY, MB, HA
SRO Pop/Rock MR5295	22 x 18	10 x 8 12 x 9	16 x 16	14 x 5.5	TH676	C700	B700	S700	H700	P700	UA, BD, SI, CY, WA
Standard MR5255	22 x 18	12 x 9 13 x 10	16 x 16	14 x 5.5	TH676	C700	B700	S700	H700	P700	UA, BD, SI, CY, WA
Jazz MR5045	20 x 18	10 x 8 12 x 9	14 x 14	14 x 5.5	TH676	C700	B700	S700	H700	P700	UA, BD, SI, CY, WA

TOM TOM					
MRT807	8" x 7"	MRT1208	12" x 8"	MRT1311	13" x 11"
MRT808	8" x 8"	MRT1209	12" x 9"	MRT141 1	14" x 11"
MRT1007	10" x 7"	MRT1210	12" x 10"	MRT1412	14" x 12"
MRT1008	10" x 8"	MRT1309	13" x 9"	MRT1613	16" x 13"
MRT1009	10" x 9"	MRT1310	13" x 10"	MRT1614	16" x 14"

BASS DRUM	
MRB1814	18" x 14"
MRB2016	20" x 16"
MRB2018	20" x 18"
MRB2216	22" x 16"
MRB2218	22" x 18"
MRB2418	24" x 18"

FLOOR TOM	
MRF1412	14" x 12"
MRF1414	14" x 14"
MRF1614	16" x 14"
MRF1616	16" x 16"
MRF1816	16" x 16"



All Meridian toms feature the I.T.S. Isolated Tom Mount System.



Newly designed lug with smaller footprint for lower overall mass.

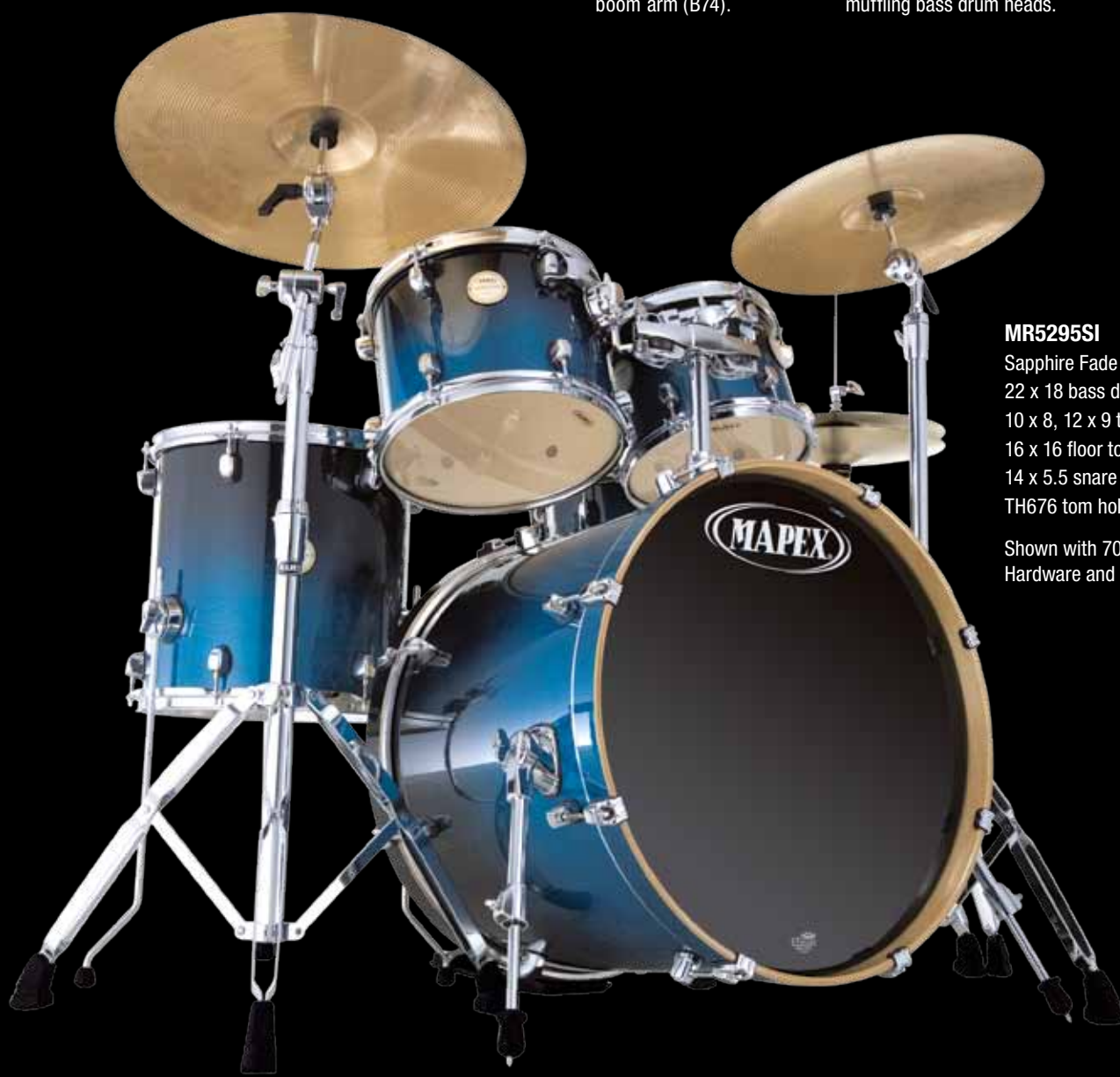


Meridian series bass drum tom holders include a socket for an additional boom arm (B74).



All Meridian Birch drums are equipped with Remo® UT drum heads and self muffling bass drum heads.

	Amber Fade (UA)
	Transparent Walnut Fade (WA)
	Black Forest Fade (BD)
	Sapphire Fade (SI)
	Transparent Honey Amber (HA)
	Transparent Cherry Red (CY)
	Transparent Midnight Black (MB)



MR5295SI

Sapphire Fade
22 x 18 bass drum
10 x 8, 12 x 9 tom toms
16 x 16 floor tom
14 x 5.5 snare drum
TH676 tom holder

Shown with 700 series hardware.
Hardware and cymbals sold separately.

HORIZON H2B

START LIVING THE DREAM

The Mapex Horizon H2B Series has cutting edge features and sound quality that go unrivaled. No matter what musical style or venue, the birch and basswood high gloss lacquer shells deliver the rich tones your music needs.

The Horizon H2B Series comes complete with the Mapex exclusive Isolated Tom Mounting System (ITS), low-profile die-cast cushioned bass drum claw hooks, Remo® drum heads and instructional setup DVD.

Aquiles Priester
Hangar

Photo by Andrea De Marchi



H2B728SR

7-piece Shell Pack, Rattan Yellow Lacquer, 22 x 18 bass drum, 8 x 7, 10 x 8, 12 x 9 tom toms, 14 x 14, 16 x 16 floor toms, 14 x 5.5 snare drum, includes TH657 tom holder, tom L arm and mounting clamp

Hardware packs and cymbals sold separately.

CONFIGURATION	BASS DRUM	TOM TOMS	FLOOR TOMS	SNARE DRUM	TOM HOLDER	CYMBAL STAND	BOOM STAND	SNARE STAND	HI-HAT STAND	PEDAL	Throne
7-Piece Shell Pack HZB728S	22 x 18	8 x 7 10 x 8 12 x 9	14 x 14 16 x 16	14 x 5.5	TH657 L-Arm Clamp						T250A
Big City Shell Pack HZB581S	18 x 14	10 x 8 12 x 8	14 x 14	14 x 5	TH657						T250A
HZB Limited Edition with Hardware HZB6295B	22 x 18	8 x 7 10 x 8 12 x 9	16 x 16	14 x 5.5	TH657 L-Arm Clamp	B500	C500	S500	H500	P500	T250A

BASS DRUM	
HZBB1814	18" x 14"
HZBB2018	20" x 18"
HZBB2218	22" x 18"

TOM TOM	
HZBT807	8" x 7"
HZBT1008	10" x 8"
HZBT1209	12" x 9"
HZBT1310	13" x 10"
HZBT1412	14" x 12"

SNARE DRUM	
HZBS4656	14" x 6.5"
Floor Tom	
HZBF1414	14" x 14"
HZBF1616	16" x 16"
HZBF1816	18" x 16"



Built-in adapter for optional boom arm.



Newly designed ITS system with clamp-style tom holder.



	Rattan Yellow (RY)
	Transparent Cherry Red (CY)
	Transparent Midnight Black (MB)

HZB6295BCY

6-piece Drum Set, Transparent Cherry Red Lacquer, 22 x 18 bass drum, 8 x 7, 10 x 8, 12 x 9 tom toms, 16 x 16 floor tom, 14 x 5.5 snare drum, includes 500 Series boom stand, cymbal stand, Snare Stand, hi-hat stand, bass drum pedal, AC901 multi-clamp with tom arm

Cymbals sold separately.

HORIZON HZB BIG CITY KIT

BIG CITY PLAYERS NEED BIG CITY DRUMS

The Mapex Horizon HZB Big City Kit is ideal for clubs and events where space is tight, loading needs to be quick and efficient while sounding your best is critical. You'll be completely knocked out with the tone and response that the birch and basswood shells deliver. Make all your gigs sound big time with the HZB Big City.

HZB581SCY

5-piece Shell Pack
Transparent Cherry Lacquer
18 x 14 bass drum
10 x 8, 12 x 8 tom toms
14 x 14 floor tom
14 x 5 snare drum
TH657 double tom holder

Hardware and cymbals
sold separately.



Rattan Yellow
(RY)



Transparent
Cherry Red
(CY)



Transparent
Midnight Black
(MB)





Horizon Fastpack Set [HXB5074BL]

- » Birch/basswood shell
- » Compact drum sizes 20"x 12" bass drum, 8"x 6" tom, 10"x 7" tom, 12"x 12" floor tom, 13"x 5" snare drum
- » Lightweight Mapex 310 series single-braced hardware
- » Remo® UT Pinstripe drum head and self muffling bass drum head

Optional gig bag set and silent practice pack are available and sold separately.

HORIZON Fastpack

Fastpack says it all; easy to get into the gig, fast to set up/tear down and load. The special Birch and Basswood shells deliver a wide range of sound, tone and projection to support any music style or situation. Spend more time making music with your drums and less time moving them.



SILENT PRACTICE PACK PRPK-5074PC

8", 10", 12", 13", 20" mesh drum heads and 4 pieces 14" plastic cymbals for silent practicing.



Easy to transport, set up and play.

GIG BAG SET DB-5074

MAPEX gig bag set is composed of 2 drum bags and one hardware bag featuring:

1. One rolling bag for the Fastpack bass drum and snare drum
2. A barrel bag for the two tom-toms and the floor tom
3. Hardware bag

HORIZON HX

The Horizon HX rewrites the book on what features an entry level drum set should have. The all basswood wrapped finish shells produce rich tones with remarkable sustain. The tone is further enhanced by the re-designed Mapex Isolated Tom Holder System (ITS).

Rashid Williams

John Legend

HX5295TCZCK

Crystal Sparkle, 22 x 18 bass drum, 10 x 8 , 12 x 9 tom toms, 16 x 16 floor tom, 14 x 5.5 snare drum, TH657 tom holder, includes 500 series hardware, Mapex cymbals and T250A throne.

The re-styled tom holder now includes a convenient spot for an auxiliary cymbal placement. The hardware is newly designed Mapex 500 Series hardware. Now, great sound is on your horizon.



	Snow White (SW)
	Burgundy Steel (YT)
	Gray Steel (GT)
	Blue Sparkle (NS)
	Gray Sparkle (QS)
	Crystal Sparkle (CK)

HX5255TCZQS

Gray Sparkle wrap, 22 x 18 bass drum, 12 x 9, 13 x 10 tom toms, 16 x 16 floor tom, 14 x 5.5 snare drum, TH657 tom holder, includes 500 series hardware and Mapex cymbal, T250A throne and setup DVD.

CONFIGURATION	BASS DRUM	TOM TOMS	FLOOR TOMS	SNARE DRUM	TOM HOLDER	CYMBAL STAND	BOOM STAND	SNARE STAND	HI-HAT STAND	PEDAL	THRONE	MAPEX CYMBALS
HX5255TCZ	22" x 18"	12" x 9" 13" x 10"	16" x 16"	14" x 5.5"	TH657	C500	B500	S500	H500	P500	T250A	14" Hi-Hats 16" Ride 20" Crash
HX5295TCZ	22" x 18"	10" x 8" 12" x 9"	16" x 16"	14" x 5.5"	TH657	C500	B500	S500	H500	P500	T250A	14" Hi-Hats 16" Ride 20" Crash

BASS DRUM	
HXB1816	18" x 16"
HXB2018	20" x 18"
HXB2218	22" x 18"

TOM TOM	
HXT807	8" x 7"
HXT1008	10" x 8"
HXT1209	12" x 9"
HXT1310	13" x 10"

FLOOR TOM	
HXF1414	14" x 14"
HXF1616	16" x 16"
HXF1816	18" x 16"

SNARE DRUM	
HXS4556	14" x 5.5"
HXS4656	14" x 6.5"

VOYAGER

The all-new Mapex Voyager delivers great sound and dynamic looks right out of the box! The Voyager's basswood shells are available in new covered finishes and featured newly designed lugs, cymbals, tom mounts and a double tom holder that accommodates an auxiliary cymbal placement. Start your voyage into drumming in the right direction with Mapex Voyager.

Walfredo Reyes JR

Lindsey Buckingham, Santana



VR5295USTCZDI

Dark Indigo, 22 x 16 bass drum, 10 x 8, 12 x 9 tom toms, 16 x 16 floor tom, 14 x 5.5 snare drum, TH656 tom holder, includes 330 series hardware, MAPEX cymbals, T250A throne and setup DVD.

CONFIGURATION	BASS DRUM	TOM TOMS	FLOOR TOMS	SNARE DRUM	TOM HOLDER	CYMBAL STAND	BOOM STAND	SNARE STAND	HI-HAT STAND	PEDAL	THRONE	BOOM ARM	MAPEX CYMBALS
VR Fully Loaded VR5295USTCZ	22" x 16"	10" x 8" 12" x 9"	16" x 16"	14" x 5.5"	TH656	C330	B330	S330	H330	P330	T250A	B53	14" Hi-Hats 16" Crash 18" Ride 12" Splash
Standard VR5254TCZ	22" x 16"	12" x 9" 13" x 10"	16" x 16"	14" x 5.5"	TH656	C330		S330	H330	P330	T250A		14" Hi-Hats 18" Ride
Jazz VR5044TCZ	20" x 16"	10" x 8" 12" x 9"	14" x 14"	14" x 5.5"	TH656	C330		S330	H330	P330	T250A		14" Hi-Hats 18" Ride



Multi-sustain cymbal felts



Built-in adapter for optional boom arm



Hideaway boom arm

	Black (BL)
	Burgundy (BY)
	Snow White (SW)
	Dark Indigo (DI)



VR5254TCZSW

Snow White, 22 x 16 bass drum, 12 x 9, 13 x 10 tom toms, 16 x 16 floor tom, 14 x 5.5 snare drum, TH656 tom holder, includes 330 series hardware, MAPEX cymbals, T250A throne and setup DVD.



All New Appointments

From the newly sculpted lug design to the smart new badge, Black Panther Snare Drums are now more beautiful than ever.



Sonic Saver™ Hoops

The all new Mapex Sonic Saver™ Hoop bridges the gap between flanged hoops and die cast hoops. The unique shaping process creates a profile that reduces wear and tear to both sticks and hands while dramatically enhancing the response and feel of every rimshot.

The Sonic Saver™ is significantly lighter than a conventional die cast hoop, it won't choke the shell's vibration. The result is a more natural percussive sound with much greater resonance.



Cylinder-Drive Strainer

The all-new cylinder-drive strainer uses a self-lubricating bearing to ensure smooth operation while providing precise control of the snare tension.



All-New Throwoff

Mapex's new piston-style throw-off is incredibly smooth and requires minimal effort to operate. The adjustment dial employs "micro-lock" technology that provides a tactile "click" as it's turned, allowing precise control.



Premium Snare Wires

All Black Panther Snare Drums feature stainless steel snare wires for crisp, lively action.



Heads by Remo®

Black Panther snares come with premium Remo® drum heads, including a coated Ambassador batter head.



BLACK PANTHER SNARE DRUMS

After a decade of success, Mapex ushers in a new era of Black Panther by introducing a new lineup of fourteen snare drum models, each with its own distinctive personality.

Working closely with our drum design team, a panel of international Mapex Artists shared their advice and expertise on everything from shell materials and functionality, to sizes and aesthetics.

The result is a collection of unique Black Panther Snare Drums that look fantastic and sound even better. Each drum features hand built and hand finished Black Panther shells and completely redesigned hardware.

Visit blackpanthersnares.com for audio samples of the entire Black Panther Snare Drum line-up.

PANTHER

- › 3mm solid steel seamless shell
- › 2mm seamless steel c&c formed shell
- › 1mm seamless steel c&c formed sound control ring
- › 14" x 5"
- › 6:4 bearing edge

The ultimate Black Panther Snare Drum features a sensitive feel, big volume and a warmer sound than you would ever expect from a metal drum.

BPST450SLN



SLEDGE HAMMER

- › 1.2mm hammered brass shell
- › 14" x 6½"
- › Traditional 45° bearing edge

Some jobs call for heavy duty equipment. This drum bludgeons its way through the din with extreme volume and a distinct rounded tone.

BPBR465HZN

BLASTER

- › 8.5mm shell constructed from 5.1mm maple shell and 3.4mm walnut reinforcing rings
- › 13" x 7"
- › 5:5 bearing edge

For an ear-shattering loud and aggressive response, tune this drum to a little higher pitch... and then warn everyone around you.

BPML3700LNUU



BLACK WIDOW

- › 5.1mm maple shell
- › 14" x 5"
- › 5:5 bearing edge

This full-bodied, versatile drum features extreme sensitivity and a dark, dry tone.

BPML4500LNTB



PHANTOM

- › 5.1mm shell constructed from two exterior 1.7mm birch plies and one interior 1.7mm walnut ply
- › 12" x 5"
- › 5:5 bearing edge

This drum, with its unique hybrid shell possesses incredible sensitivity that creates a ghostly quality.

BPBW2500CNWA

PHATBOB

- › 12mm maple shell
- › 14" x 7"
- › 2:8 bearing edge

Built to be played hard and loud, this bad boy features an extra thick shell, rounded bearing edges and a deep snare bed for a thick, fat sound.

BPML4700TLNTB



CHERRY BOMB

- › 5.1mm cherry wood shell
- › 13" x 5 1/2"
- › 1:9 bearing edge

Classic in style and performance, this uniquely sized drum is as distinctive to the ear as it is to the eye.

BPCW3550CNCY

FASTBACK

- › 5.1mm maple shell
- › 12" x 7"
- › 1:9 bearing edge

The size and tuning range of this drum combine to produce a distinctive high pitch with plenty of body making it a great choice for Gospel or R&B.

BPML2700CNIT





VELVETONE

- › 8.1mm shell constructed from one 3mm exterior burl maple ply, one 3.4mm walnut middle ply and one 1.7mm interior maple ply
- › 14" x 5½"
- › 1:9 bearing edge

Don't be deceived by its beautifully seductive exterior, this drum is wickedly dark with a high degree of sensitivity.

BPMW4550CNUB

MACHETE

- › 1mm steel shell
- › 14" x 6½"
- › Traditional 45° bearing edge

If you're in need of a drum that can hack its way through the thickest of guitar noise, look no further.

BPST4651LN



BLADE

- › 1mm steel shell
- › 14" x 5½"
- › Traditional 45° bearing edge

A visually sleek and alluring instrument with razor-sharp tone that carves deeply into any groove.

BPST4551LN



BRASS CAT

- › 1.2mm brass shell
- › 14" x 5½"
- › Traditional 45° bearing edge

Slightly softer than a steel snare. This drum produces an aggressive sound that's incredibly smooth.

BPBR4551ZN



STINGER

- › 1mm steel shell
- › 10" x 5½"
- › Traditional 45° bearing edge

Tune this drum high and hit it hard. It'll only hurt for a second.

BPST0551CN

RETROSONIC

- › 8.1mm walnut shell
- › 14" x 5½"
- › 1:9 bearing edge

This classically styled, beautifully crafted drum produces a rich, vintage-style sound.

BPWB4550CNEN



MPX Snare Drums

MPX Maple 14 x 8

[MPML4800BMB]

- » 6.5mm maple shell
- » Transparent Midnight Black
- » 20 low-mass lugs
- » Black hardware
- » Fully adjustable throw-off
- » Remo® UX drum heads

MPX Maple 13 x 6

[MPML3600CNL]

- » 6.5mm maple shell
- » Gloss natural
- » 16 low-mass lugs
- » Chrome hardware
- » Fully adjustable throw-off
- » Remo® UX drum heads

Also available in black lacquer

[MPML3600BMB]

- » Transparent Midnight Black
- » Black hardware



MPML4550CNL

MPX Maple 14 x 5.5

[MPML4550CNL]

- » 6.5mm maple shell
- » Gloss natural
- » 20 low-mass lugs
- » Chrome hardware
- » Fully adjustable throw-off
- » Remo® UX drum heads

Also available in black lacquer

[MPML4550BMB]

- » Transparent Midnight Black
- » Black hardware



MPBC4550CXN

MPX Maple 14 x 7

[MPML4700CNL]

- » 6.5mm maple shell
- » Gloss natural
- » 20 low-mass lugs
- » Chrome hardware
- » Fully adjustable throw-off
- » Remo® UX drum heads



MPST4550

MPX Birch 14 x 5.5

[MPBC4550CXN]

- » 7.2mm birch shell
- » Gloss natural
- » 20 low-mass lugs
- » Chrome hardware
- » Fully adjustable throw-off
- » Remo® UX drum heads

Also available in black lacquer

[MPBC4550BMB]

- » Transparent Midnight Black
- » Black hardware

MPX Birch 13 x 6

[MPBC3600CXN]

- » 7.2mm birch shell
- » Gloss natural
- » 16 low-mass lugs
- » Chrome hardware
- » Fully adjustable throw-off
- » Remo® UX drum heads

Also available in black lacquer

[MPBC3600BMB]

- » Transparent Midnight Black
- » Black hardware



MPBC4550BMB

MPX Steel 14 x 5.5

[MPST4550]

- » 1.0mm steel shell
- » Chrome finish
- » 20 low-mass lugs
- » Chrome hardware
- » Fully adjustable throw-off
- » Remo® UX drum heads

MPX Steel 13 x 3.5

[MPST3354]

- » 1.0mm steel shell
- » Chrome finish
- » 8 low-mass lugs
- » Chrome hardware
- » Fully adjustable throw-off
- » Remo® UX drum heads

MPX Steel 10 x 5.5

[MPST0554]

- » 1.0mm steel shell
- » Chrome finish
- » 6 low-mass lugs
- » Chrome hardware
- » Fully adjustable throw-off
- » Remo® UX drum heads

Let your feet fly...

FALCON



The Falcon's hollow inox steel drive shaft offers the utmost in strength without adding unwanted drag or excess weight. This increases the smooth operation of the pedal and gives Falcon its sensationally smooth feel.

The new Falcon from Mapex is the smoothest bass drum pedal you'll ever play. Every function and adjustment has been engineered to make Falcon feel as if it's an extension of your foot. Elevate your performance to a new level and let your feet fly with Falcon from Mapex.

Glide Cam



Pursuit Cam



The Falcon is equipped with interchangeable cams to suit your playing style. The "Glide" cam offers an equal amount of inertia from the beginning to the end of the stroke, while the "Pursuit" cam is recommended for increased power and maximum impact.

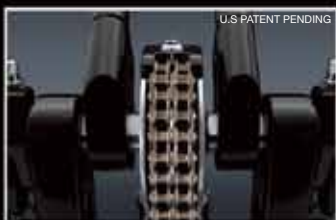
Footboard angle and beater angle are independently adjustable, enabling you to fine tune your ideal combination of playing comfort and force of stroke.

U.S. PATENT PENDING

The uniquely sculpted footboard allows you to position your foot at any angle and operate the pedal with minimal expended energy, making even the most intricate patterns seem effortless.

Falcon Single Pedal
(P1000)

The Falcon's footboard design provides the feel of a longer board without the additional weight and mass. A lighter footboard gives you greater control with less fatigue.



The Falcon Double Pedal's beaters are equidistantly positioned for an even response from primary to secondary beater. They can be laterally repositioned to accommodate larger beaters like the Mapex tri-tonal beater.

The reversible beater head comes with interchangeable 10g and 20g inserts. By choosing one of these weights (or playing without any additional weight at all) you determine the desired degree of centrifugal force.

Falcon's dual-axle design ensures that both beaters strike the head with equal impact for consistent sound and incredible feel.

The Falcon Double Pedal's connecting rod can be extended from either end, making it easy to accommodate virtually any set-up.

A sure-grip rubber base, adjustable spurs and an optional Velcro® strip ensure that the pedal will stay put on any surface.

The footboard and heel plate are hinged using an exclusive sealed bearing mechanism that offers zero resistance and secure operation with no lateral movement.

Falcon Double Pedal

P1000TW

Left foot pedal also available (P1000LTW).



Because the Falcon's footprint is more compact than other bass drum pedals, you'll have more room to comfortably position your hi-hat and snare stands.



By allowing the torque-free spring mechanism to move independently the Falcon's stroke and recoil motions are exceptionally smooth.



The Falcon's patented Talon bass drum hoop clamp features locking claws that move independently from the pedal frame. Even if your bass drum is pitched at a severe angle, the pedal's remains flat to the floor and securely clamped to the drum for the utmost comfort and security.

FALCON

ACCESSORY PACKS

The same engineering that went into developing the direct drive technology for the Raptor pedal can now be added to your existing Falcon Pedal. Pick up the Direct Driver Linkage Accessory Kit and with the turn of two screws, quickly add the precision and power of direct drive to your Falcon.



SCAN FOR
INFORMATION



AC1000D Falcon Direct Drive Pack

*Adding direct drive to your Falcon Pedal takes only minutes.
Simply remove the two screws from the existing chain
mechanism and replace the chain with the Direct Drive.*



**AC1000BPK - Single BD Beater Pack
with 10g and 20g Weight Set**

AC1000W - 10g and 20g Weight Set

Raptor

DIRECT DRIVE PEDALS

THE SMOOTHEST STEP TO SPEED

The Raptor has all of the power, stability and security you would expect from a direct drive pedal, but has the feel that you can only get from a chain pedal. In addition to the unique design of the Direct Driver linkage, Mapex has included some of the advanced technology found on the Mapex Falcon Pedal. This formula results in a pedal with incredible flexibility and a feel that's unbelievably responsive and smooth.

Once you play it, you'll understand immediately why the Mapex Raptor is the only pedal that is a smooth step to speed.



Raptor Single Pedal
P900D



Raptor Double Pedal
P900DTW
Left foot pedal also available (P900DLTW).



Direct Drive – The power, stability & security you would expect from a direct drive pedal, with the feel that you only get from a chain pedal.



Torque-Free Spring System – By allowing the torque-free spring mechanism to move independently, the Raptor's stroke & recoil motions are exceptionally smooth.



Reversible Beater Head with 10g Insert – With the choice of playing without any additional weight at all, you can determine the desired degree of centrifugal force.



Compact Footprint – With a footprint of only 4.44", you can now comfortably position your hi-hat & snare stands.

P710 SERIES BASS DRUM PEDALS

YOUR FIRST BIG STEP

Every first step is a big deal and your first bass drum pedal is no exception. It has to be fast, rugged and, of course, look cool! The new Mapex P710 Series drum pedals are changing the rules of what a bass drum pedal should to be.

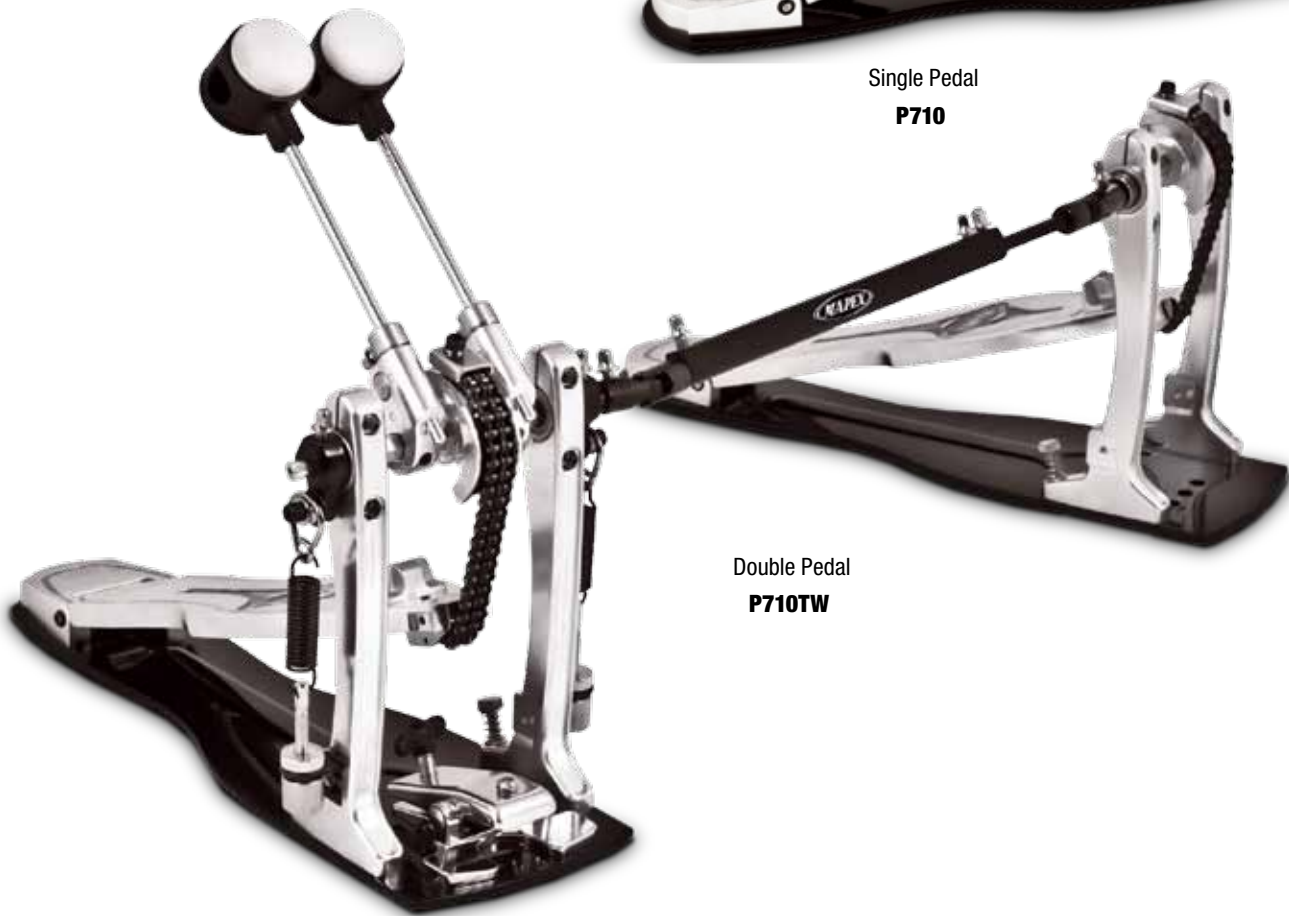
The P710 Series pedals start with a strong and solid double chain that will handle all of the fast footwork you can throw at it. The P710's solid steel base plate with adjustable spurs provides all of the strength and stability you'll ever need.

Make the Mapex P710 bass drum pedal your very first big step.

Left foot pedal also available (P710LTW).



Single Pedal
P710



Double Pedal
P710TW



Double chain drive system & solid base plate



With a footprint of only 4.44", you can now comfortably position your hi-hat & snare stands.



Falcon style beater with reversible head

P500 SERIES BASS DRUM PEDALS

Mapex Pedals are made of solid steel components and are engineered to be reliable, durable and most importantly playable. Adjustments are made quickly and easily, keeping drummers going night after night.

Single Pedal
P500



Double Pedal
P500TW



	FALCON P1000 SERIES			RAPTOR P900D SERIES			P710 SERIES			P500 SERIES	
MODEL	P1000	P1000TW	P1000LTW	P900D	P900DTW	P900DLTW	P710	P710TW	P710LTW	P500	P500TW
DRIVE	Double Chain			Direct Drive			Double Chain			Single Chain	
CAM	Interchangeable Cam										
TORQUE FREE SPRING SYSTEM	Yes			Yes							
BEATER	Reversible Beater			Reversible Beater			Reversible Beater			Dual-Tone ABS Beater	
BEATER WEIGHT	10g/20g			10g							
HOOP CLAMP	Talon Bass Hoop Clamp			Folating Hoop Clamp							

Boom Stands

Mapex boom stands are available with a wide range of options to fit drummers every need. Mapex boom stands feature either die cast memory locks or clamp style memory locks for security and ease of set-up, slip-proof nylon inner sleeves for rattle-free playing and heavy duty skid resistant rubber feet for stability.

B500

B710

B330

B523

B750A

B950A

B700

MODEL	B950A	B750A	B710	B700	B523	B500	B330
CYMBAL TILTER	Universal Ball-in-socket		Super-glide stepless		Multi-tooth ratchet		
OS CYMBAL ACCENTUATORS	Yes		Multi-sustain cymbal felts				
BOOM ARM	Knurled Hideaway		Knurled	Knurled Hideaway			
TUBE CONSTRUCTION	Triple tube construction with slip-proof nylon inner sleeve		Three-tiered height adjustment with molded nylon insert		Triple tube construction with slip-proof nylon inner sleeve		Dual tube construction with slip-proof nylon inner sleeve
LOCKS	Die cast memory locks		Re-engineered clamp style memory locks; Ergonomically design wing nuts		Clamp style memory locks; New ergonomically designed wing nuts		
LEGS	Double braced						
FEET	Slip proof rubber				Re-designed slip proof rubber feet		

Cymbal Stands

Mapex has a wide variety of cymbal stands to accommodate any configuration drummers can dream up. Each model is built to be flexible and provide unmatched stability. All Mapex stands feature die cast memory locks for security and ease of set-up, slip-proof nylon inner sleeves for rattle-free playing and heavy duty skid resistant rubber feet for stability.



MODEL	C950A	C750A	C700	C500
CYMBAL TILTER	Universal Ball-in-socket		Super-glide stepless	Multi-tooth ratchet
OS CYMBAL ACCENTUATORS	Yes	Yes	Multi-sustain cymbal felts	
TUBE CONSTRUCTION	Triple tube construction with slip-proof nylon inner sleeve		Three-tiered height adjustment	Dual tube construction with slip-proof nylon inner sleeve
LOCKS	Die cast memory locks		Re-engineered clamp-style memory locks; Ergonomically designed wing nuts	Clamp-style memory locks; New ergonomically designed wing nuts
LEGS	Double braced			
FEET	Slip proof rubber		Re-designed slip proof rubber feet	

Drummer's Thrones

THE BEST SEAT IN THE HOUSE

Playing and sounding your best is about more than your drums. Feeling comfortable and secure while you play is every bit as important. The new Mapex T770 and T775 Four Point Support Thrones provide comfort and stability for every gig.

The heavy-duty four-leg design keeps you completely stable and perfectly balanced while playing. The threaded steel spindle allows precise height adjustment from 18 to 26 inches. A memory lock secures your desired seat height so you're completely comfortable every time you play.



Saddle Support Throne
T775



Round Support Throne
T770

Choose from the 14" round or the 17" wide saddle-style seat. Both have a 4" cushion. The removable backrest can be adjusted horizontally and vertically to provide critical lower back support.

When it's your time to perform, make sure you have the best seat in the house with the Mapex T770 and T775 Four Point Support Thrones.

Mapex thrones are durable, stable and comfortable. With a variety of sizes available, drummers sure to find a Mapex throne that suits drummers' needs.



T765A



T765ASER



T755A



T575A



T750A



T570A



T561A

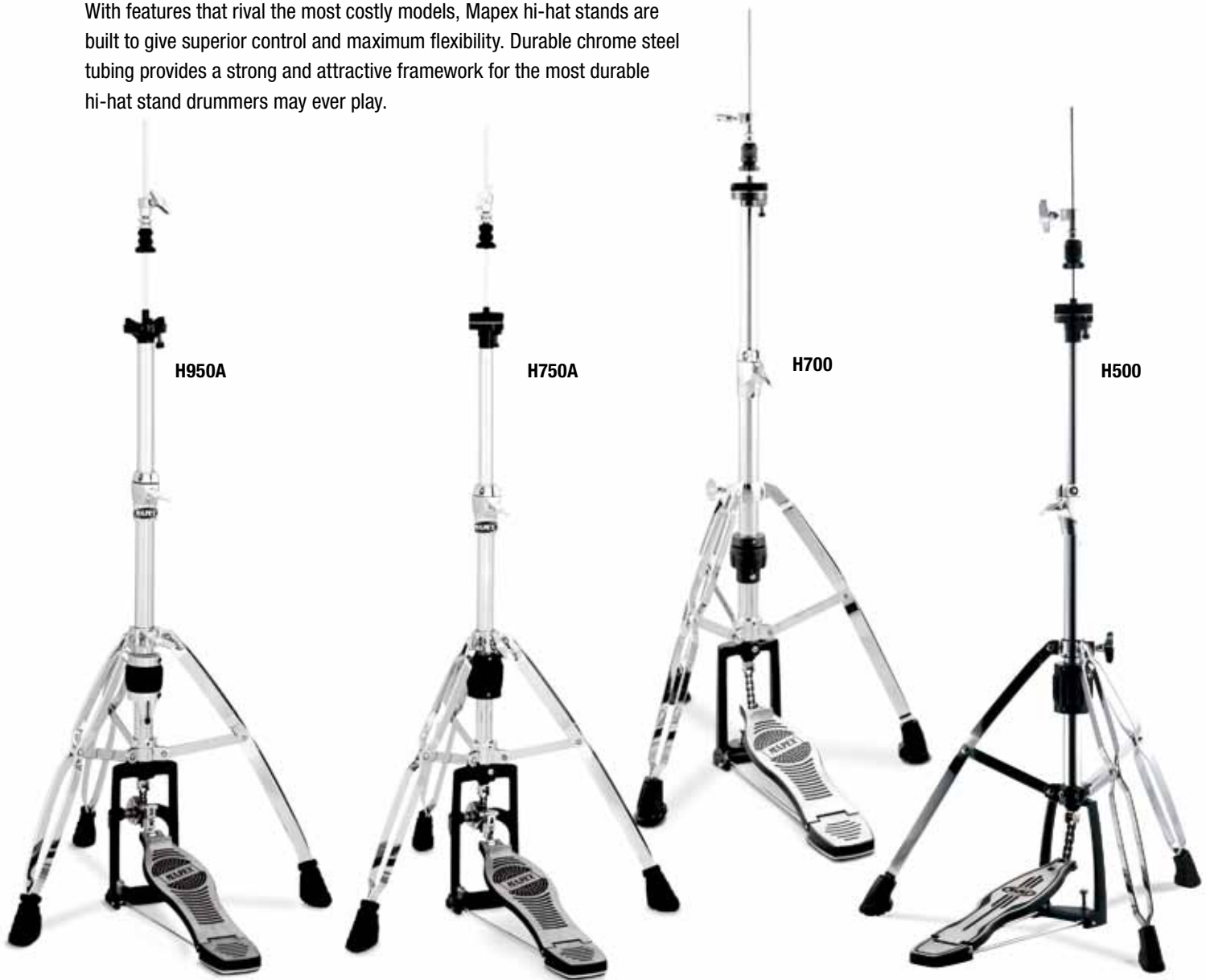


T270A

MODEL	T775	T770	T765A	T765ASER	T755A	T750A	T575A	T570A	T561A	T270A
CUSHIONED SEAT	Saddle Style	Round	Saddle Style			Round	Saddle Style	Round		
DIMENSION	17" Wide x 4" Thick	14" Wide x 4" Thick	17" Wide x 4" Thick			14" Diameter x 4" Thick	17"Wide x 4"Thick	14" Diameter x 4"Thick	13" Diameter x 2.5 Thick	12" Diameter x 2.5 Thick
SEAT	Durble Soft-Vinyl		Cloth Top	Burgundy Cloth Top	Durable Soft-Vinyl	Durable Soft-Vinyl				
HEIGHT ADJUSTMENT	Threaded Steel Spindle w/ Memory Lock						Tube Collar Lock		Threaded Steel Spindle	5 Position Bolt Lock
HEIGHT	18"-25"		18"-26"				16.1"-24.4"			17.3"-22"
	Double Brace/ Four Point Support		Double Brace							
BACK SUPPORT	Yes									

Hi-Hat Stands

With features that rival the most costly models, Mapex hi-hat stands are built to give superior control and maximum flexibility. Durable chrome steel tubing provides a strong and attractive framework for the most durable hi-hat stand drummers may ever play.



MODEL	H950A	H750A	H700	H500
DRIVE	Tru-direct-pull™ Drive system			Direct drive
TENSION ADJUSTMENT	10-stop wide-range			Variable tension adjustment
OS CYMBAL ACCENTUATOR FOR TOP CYMBAL	Yes	Yes	Multi-sustain cymbal felts	
SEAT	Fully adjustable tri-nodal cymbal seat	Heavy duty felt bottom cymbal seat		
DUAL TUBE CONSTRUCTION	with slip-proof nylon inner sleeve			
LOCKS	Die cast memory locks		Re-engineered clamp style memory locks	Clamp style memory locks with new ergonomically designed wing nuts
FLOOR SPIKES	Retractable			
LEGS	Double braced			
LEG ASSEMBLY	360° rotating			
FEET	Slip proof rubber		Re-designed slip proof rubber	
PEDAL/FOOTBOARD	Adjustable footboard angle			Newly designed pedal platform; chain-pull drive system

Snare Stands

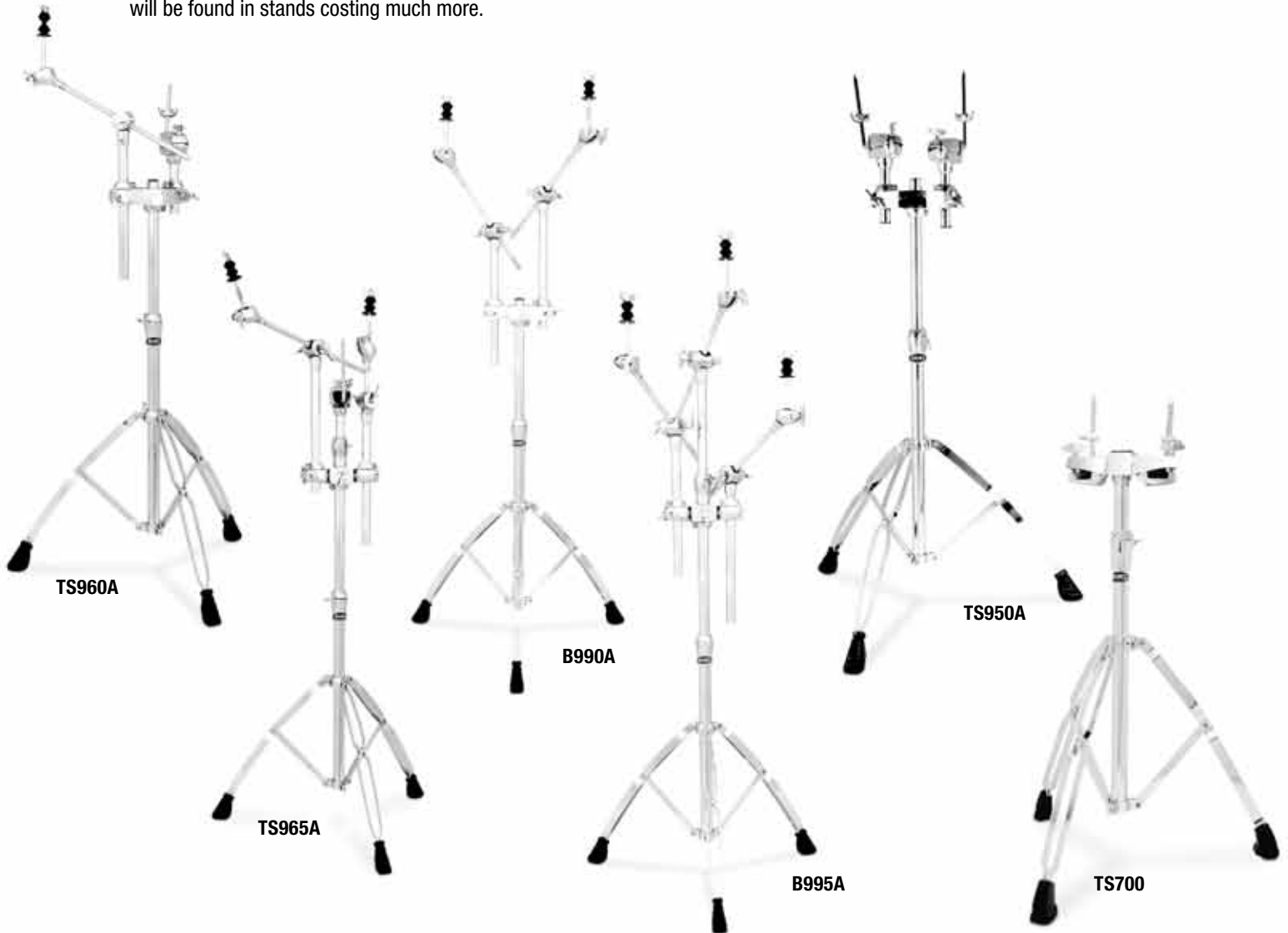
Mapex snare stands are designed to allow drummers precise positioning and stable balance of snare drums, while allowing the drum to resonate freely.



MODEL	S950A	S750A	S700	S500
SNARE BASKET TILTER	Universal ball-in-socket		Multi-tooth ratchet	
DUAL TUBE CONSTRUCTION	with slip-proof nylon inner sleeve			
LOCKS	Die cast memory locks		Re-engineered clamp style memory locks	Clamp style memory locks with new ergonomically designed wing nuts
LEGS	Double braced			
FEET	Slip proof rubber		Re-designed slip proof rubber	

Multi-Use Stands

Whatever the set-up, Mapex makes a multi-use stand that will reduce the amount of hardware drummers carry to and from gigs. Mapex stands are built with versatility and durability in mind and include features and accents that will be found in stands costing much more.



	COMBO STANDS		DOUBLE BOOM STAND	TRIPLE BOOM STAND	TOM STAND	
MODEL	TS960A	TS965A	B990A	B995A	TS950A	TS700
CYMBAL PLACEMENT	1	2		3		
TOM HOLDER	1				2 independently adjustable	2
CYMBAL TILTER	Universal ball-in-socket					
TOM ARM	Universal ball-in-socket				Universal ball-in-socket	
TUBE CONSTRUCTION	Dual tube construction with slip-proof nylon inner sleeve					
BOOM ARM	Knurled Hideaway					
AUXILIARY BOOM PLACEMENT						B74
OS CYMBAL ACCENTUATORS	Yes					
LOCKS	Die cast memory locks					New re-engineered clamp-style memory locks
LEGS	Double braced					

Multi-Clamps



AC913
Cowbell/Accessory holder for cymbal stand



AC912
Cowbell/Accessory holder for bass drum



AC911
Add-on boom arm with combo multi-clamp. Includes 12-inch knurled boom arm with universal ball-in-socket tilter and OS Cymbal Accentuator



AC910
Horizontal adjustable multi-purpose clamp



AC909
Adjustable bass drum lift for 18-inch bass drums



AC908
Cymbal/Tom arm multi-purpose platform with center hole to fit all 1 inch stands



AC906
Bass drum/hi-hat attachment clamp for close placement in double bass set-ups



AC902
Dual-angle adjustable multi-purpose clamp



AC903
Combination center-ratchet adjustable multi-purpose clamp



TRI-TONAL BASS DRUM BEATER
Rotating beater with maple, felt and ABS beater. Part No. 4680-515A



HI-HAT CLUTCH
Hi-Hat Model H700
Part No. 2681-346A



HI-HAT CLUTCH

Hi-Hat Model	Part Number
H330 (not shown)	2681-346X
H500	2681-346A
H950A/H750A/H350A	2680-346A



REPLACEMENT LUGS

4 per pack. Fits Saturn and Orion Bass Drums when removing tom mount apparatus. Available in Chrome, Black or Gold
Part No. Plating
0702-D02A4 Chrome
0712-D13A4 Black
0702-D07A4 Gold

Cymbal Arms / Tom Holder



B53
2-piece hideaway boom cymbal arm (12-inch) with multi-sustain cymbal felts, multi-tooth ratchet cymbal tilter. Used with Voyager and Horizon tom holder.



B74
2-piece hideaway boom cymbal arm (12-inch) with multi-sustain cymbal felts, super-glide stepless titler, accu-lock titler handle. Used with Meridian style tom holder.



B75
2-piece hideaway boom cymbal arm (12-inch) with universal ball-in-socket tilter, knurled boom arm and OS Cymbal Accentuator.



B78
2-piece hideaway boom cymbal arm (20.1-inch) with 2.2 lb counterweight, universal ball-in-socket tilter, knurled boom arm and OS Cymbal Accentuator.



CH72
Adjustable Tension remote hi-hat arm with heavy duty felt bottom cymbal seat and OS Cymbal Accentuator.



TH685
Tom shaft and arm set for Orion Series, Tube Diameter: 25mm



TH682
Tom shaft and arm set for Saturn Series, Tube Diameter: 25mm



TH676
Tom shaft and arm set for Meridian Series. Tube Diameter: 1-inch



TH657
Tom shaft and arm set for Horizon Series. Tube Diameter 1-inch



TH656
Tom shaft and arm set for Voyager series. Tube Diameter 1-inch



TH653
Single Tom Holder for Horizon/Voyager Series bass drums. Tube Diameter: 1-inch



TH684
Single Tom arm for add-on toms attached to tom stands. Tube Diameter: 7/8 inch



TH683
Single Tom Holder for Saturn/Orion series bass drums. Tube Diameter: 1-inch



6705-075A
Tube expander allows TH684 Single Tom Arm (7/8 inch) to fit into standard size bass drum tom holder receiver (1-inch).

Accessories



LOGO BASS DRUM HEADS

REMO® Weatherking Ambassador Ebony
Powerstroke Front Head

Model	Size
0318-620BB-MP	20-inch
0318-622BB-MP	22-inch
0318-624BB-MP	24-inch

REMO® UT Self-Muffling Ebony Front Head

Model	Size
0237-K18CB-MP	18-inch
0237-K20CB-MP	20-inch
0237-K22CB-MP	22-inch
0237-K24CB-MP	24-inch



SONIC SAVER FOR SNARE

Heavy-duty Sonic Saver features the perfect balance between regular 2.3mm powerhoop and die-cast hoop.

The special curling process that forms the cylindrical shape enhances the overall strength and provides more stability under any tuning condition.

This lighter hoop results in an opened-sound with power and mellow rim shot. The Sonic Saver hoop is engraved with the Mapex Sonic Saver logo and available in Chrome, BL Brushed or Brass brushed finish.

Hoop	Model#	Diameter	Finish
Top hoop	0147-1006	10"	Chrome
Bottom hoop	0147-10061	10"	Chrome
Top hoop	0147-1208	12"	Chrome
Bottom hoop	0147-12081	12"	Chrome
Top hoop	0147-1308	13"	Chrome
Bottom hoop	0147-13081	13"	Chrome
Top hoop	0147-1308BB	13"	BL brushed
Bottom hoop	0147-13081BB	13"	BL brushed
Top hoop	0147-1410	14"	Chrome
Bottom hoop	0147-14101	14"	Chrome
Top hoop	0147-1410BB	14"	BL brushed
Bottom hoop	0147-14101BB	14"	BL brushed
Top hoop	0147-1410AB	14"	Brass brushed
Bottom hoop	0147-14101AB	14"	Brass brushed



SNARE WIRES

Available in Chrome plated and Stainless.

Part No.	Length	Strands	Plating
1S584850	10-inch	16	Stainless
1S582850A	10-inch	16	Chrome
1A396850A	12-inch	20	Stainless
1A394a850A	12-inch	20	Chrome
1K396850A	13-inch	20	Stainless
1K394850A	13-inch	20	Chrome
18794850A	14-inch	20	Chrome
18796850A	14-inch	20	Stainless
1F6W0850	13-inch	42	Chrome
187W0850	14-inch	42	Chrome



MAPEX ROLLING HARDWARE BAG

Durable fabric Mapex rolling hardware bag with side compartments holds up to six pieces of hardware including stands and pedals.

Bag Dimensions: 38-in. long x 14-in. wide x 10-in. deep

PMK-M113



MAPEX PEDAL BAGS

Designed specifically for Mapex single and double pedals, these rugged nylon pedal drum bags offer safe transport and protection of any Mapex foot pedal. Each bag comes with sturdy carrying handles as well as a detachable adjustable shoulder strap.

PDBG4500TW (double pedal bag)

PDBG4835 (single pedal bag)



PADDED DRUM BAG SETS

Soft gig bags embroidered with the Mapex logo. Features padded compartments and handles, reinforced zippers.

Model	Configuration	Sizes (in.)
DB-T04204	Jazz (5044)	20 Bass, 10 & 12 Tom, 14 Floor Tom, 14x5.5 Snare
DB-T26204	SRO (5295)	22 Bass, 10 & 12 Tom, 16 Floor Tom, 14x5.5 Snare
DB-T26324	Standard (5255)	22 Bass, 12 & 13 Tom, 16 Floor Tom, 14x5.5 Snare



PRACTICE PAD

Mapex Practice Pad (8" and 12") features a unique design for quiet, varied practice routines.

Part No.	Size
PRPD-08	8"
PRPD-12	12"



MAPEX MULTI-SUSTAIN CYMBAL FELTS

3481-355X



MAPEX DRUM KEY

New Ergonomic design drum key, work with tension and adjustment screws from most of manufactures.

KZWA059



MAPEX LOGO STICKERS

Features Mapex "Swirl" logo in 6-inch size. Ideal for bass drumheads and road cases.

1900M12110 (Black)/
1900M12110W (White)

Mapex Artist Roster

Argentina



Alejandro Collados
Independent



Jorge "Tanque" Iglesias
La Renga



Esteban Kubista
Kyosko



Marcelo Mira
Independent



Mauricio "Topo" Espindola
Skay Beilinson



Antonio Trapanotto
Independent



Andy Vilanova
Carajo



Sebastian "Tano" Cavalletti
Independent



Palin Sosa
Los Nocheros

Australia



Sebastian "Sebolla" Paradisi
Los Cafres



Nikko Taranto
Inferno 18



Ben Cant
James Blundell, Jetty Road, Lucky Star, Shelia E (Tour), Independent



Richard Evensands
Independent, Toehider, Demonoid



Ian V. Jones
Supergroove, Alex Lloyd, Independent



Tim Powells
The Church, Independent



James Wartroba
Calerway

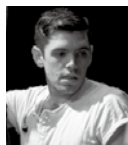


Sean Bailey
Sydonia



Rohan Sforcina
Oh Mercy

Austria



Calvin Welch
Independent



Shane O'Brien
Confession



Ryan D'Sylva
Goldfields / Stealing O'Neal



Klaus Perez-Salado
Christina Stuermer



Plescher Lukas
Krautschaedl



James Lovell
Independent



Neil Burnett
KROSFYAH



Jordi Geuens
Independent



Siccio Kloosterman
Independent

Barbados

Benelux

Bosnia

Brazil



Bruno Meeus
Independent



Martijn Peters
Stream of Passion



VEDRAN PAŽULJ
Independent



Amilcar Christofaro
Torture Squad



Norival D'angelo
Roberto Carlos



Ricardo Japinha
CPM22



Aquiles Priestter
Hangra



Junior Vargas
Independent/Pedro Mariano



Vera Figueiredo
Independent

Bulgaria

Canada



André Márcio
Eminence



Stoyan Yankoulov



Tony Albino
Belle et Bum, Session



Moose
Your Favorite Enemies



Carlos Araya
Anonymus



Stéphane Chamberland
Independent



Nico Curci
The Real Deal



Bernard "Bingo" Deslauriers
Bob Walsh



Allison Hovey
Kevin Chase, Dee Hernandez



Joel Laprise
That Whaling Band



Ryan Long
The Johnstones



Branden Morgan
Misery Signals



Andrew Stricko
Faber Driver



Jeff Towers
Bad Habits Die Hard



Josh Trager
Sam Roberts Band



Matt Richmond
Saint Alvia



Curtis Bernard
Independent



Oli Beaudoin
Neuraxis

Chile

China



Franck Camus
Exhult



Dominique Chapados
Michel Pagliaro, Shane Murphy



Alexandre Dubé
Icewind



Landryx Unexpect



Manuel Paez Franco
Independent, Teacher-Educator-Composer



Christian Hirth
La Media Banda, CODE



Juanita Parra Correa
Los Jaivas



Dawei



Pengfei Wang

Colombia



Di Zhu



David



ShiWei Sun



Hangrun Liu



Xiaoming Wang



Shiqiang Yu



Michael Huang



Jorge Forero
clinician Independent



Daniel Segura
Independent

Croatia



Frank Calzadilla
Independent



Einar Escaf
Independent



Blu Martinez
Independent



Jadran Ducic
Cico



Jan Ivelic Pele
Waveform band,
Independent



Amar ešljar



Pavel Briza
Petr Bende



Tomas Konupka
Navigators



Klaudius Krystin
Prazsky Vyber II, A.
Bricta



Zdenek "Fenek" Steiner
Wahnout



Martin Vajgl
Cechomor, Vitava



Jiri "Zeli" Zelenka
V. Misik, B. Ebenove



Radek Brichac
independent



Pavel Fajt
independent



Lukas Pavlik
D. Kraus, Cartonnage, O.
Kabrna trio



Zbyněk Rauser
Support Lesbiens



Michal Pavlicek
Gang Ala Basta



Zdenek Koubek
Czech philharmony

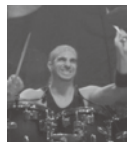
Cyprus



Jaroslav Haz
Independent



Pavel Kubat
Root



Constantinos Pavlides



Marko Atso
Metsatoll, Loits



Roland Puusepp
Terminator, Pantokrator



Kallervo Karu
Toe Tag, Revolver



Markku DeFrost
Happoradio



Risto Rikala
Kwan



Tuuli Tik Tak

Estonia

Finland

France



Oli-Matti Watti Wahistrom
51 Koodia



Aureline Clair
Ina, Ich



Franky Costanza
Dagoba



Vincent Girault
Vega Star



Julien Goepp
Independent Winner of
DOT 08'



David Hazet
Tripod Layne



Ion Meunier
Shaka Punk



Gergory Mavridorakis
Dub Incorporation



Jocelyn Moze
Empyr



Charlie Poggio



Simon Teller
Winner of DOT 08'



Dominique Berlan
Independent



Michael Desir
Independent



Jon Grandcamp
Independent



Bruno Matthieu
Independent



Piwee
Independent



Olivier Robineau
Independent



Bas Bluis
Independent

Germany



Fred Vilard
Independent



Damien Schmitt
Independent



Bertrand Renaudin
Independent



Franck Vaillant
Independent



Herve Coquerel
Independent



Stefan Arnold
Grave Digger



Randy Black
Primal Fear



Felix Bohnke
Edguy



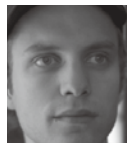
Dirk Brand
Independent



Stefan Gemballa
Powerwolf



Andreas Gillmann
Independent



Thomas Heinz
DOT 2008 Winner



Bernd Herrmann
Soehne Mannheims



Claus Hessler
Independent



Willy Ketzner
Willy Ketzner Trio



Gerd Luecking
GiftDwarf Lightmare



Vom Ritchie
Die Toten Hosen



Juergen Stiehle
Die Happy

India



Werner Schmitt
Independent



Matthias Voigt
Heaven Shall Burn



Nick Wachsmuth
Maroon



Sven Hansen
Stigma



Thomas Ludwig
Jazz Pistols



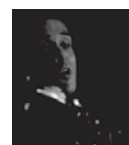
Manuel Di Camillo
DOT Germany 2010



Vektor
Kreator



Bobby Schottkowski
Sodom



Ryan Colaco
Kryptos

Indonesia



Rahul Hariharan
Bhayanak Maut



Virendra Kaith
Demonic Resurrection



Hamza Kazi
Workshop



Reuben Pachauu
Illrd Sovereign



Aniket Waghmode
Sceptre



Rahul Gopal
Independent



Sandy Andarusman
PAS Band



Gerry Herb
Krakatau



Posan
Kotak

Italy



Konde (Chandra Christanto)
Samson



Seno Aji Wibowo
AUDIOJET



Alsa



Luca Bergia
Marlene Kuntz



Giorgio Di Tullio
Independent



Antonello Giorgi
Luca Carboni



Alfredo Golino
Independent



Giovanni Pezzoli
Stadio



Stefano Pisetta
Independent

Kazakhstan



Federico Sasudelli
The bastard Sons of Dianiso



Alex Barberis
Independent



Max Govoni
Independent



Phil Mersa
Independent



Renato Raineri
Independent



Roberto Pirami
Independent



Andrea Ventura
Independent



Donald Renda



Sergey Litvinov
Urker, the Fridays

Korea



Hyun Sung Hwang
No Brain



Jung Hoon Lee
Independent



Roland Ghoiril



Javier Barrera
B4 - Clinician- Educator- Independent



Waldo Madera
Juanes- Clinician/ Educator-Independent



Luke Casey
Independent



Frost
Satyricon, 1349



Stein Inge Braekhus



Steinar Krokstad

Lebanon

Mexico

New Zealand

Norway

Philippines



Marcelo Dizon
Independent



Robert dela Cruz
Wilabaliw/ Rico Blanco/ Skychurch/ Quezo



Otep Conception
Francis M./ Ely Buendia/ Ozawa/ Gloc 9



Nelson Sobral
Independent



Krzysztof Dziezic



Slawomir Berny
Turnau



Krzysztof Polinski
4 Lyn



Artur Malik
Funk de Nite



Bartek Pawlus
2010 DOT Winner

Portugal

Poland



Cezary Konrad



Danil Prokopyev
Markscheider Kunst



Denis Shakhnov
Lumen



Alexey Nazarchuk
TRACKTOR BOWLING



Feudor Lokshin
STIGMAT



Gary Bagdacaryan



Alexander Klimovich



Dmitri Khokhlov
Andrey Bandera



Anton Sagachko
JANE AIR

Serbia

Spain



Vladimir Migric
Lance Lopez (USA), Valentino Band (BiH)



Petar Radmilovic
Big Band RTS, JazSence



Jovan Satric
Gimp, "Loco" band



Dusan Zivanovic
Orthodox Celts, Metropolis Pops Orchestra



Roberto Castresana
Soziedad Alkoholiika



Andy C
Saratoga



Haritz Garde
La Oreja de Van Gogh



ANGEL CRESPO



CARLOS CARLI



Oscar Bravo



Andel Celada



Eric Franklin



Paco Garcia



Javier Herrero



Larry Martin



Toni Mateos



Ezequiel Navas



Jose Pereira

Sweden

Switzerland



Ramon Angel Rey



Pepe Sanchez



Felip Santandreu



Kiki Tornado



Johan Koleberg
Therion



Jan Lind
Candlemass



Eric Young
Crash Diet



Laurent Biolley
Stress



Lukas Frohofer
Snitch

Slovakia

Taiwan



Vladimir Jaeggi
independent, Circus Monte Carlo



Toshio Yakkatoku
Philip Fankhauser



Christian Busang
Independent



Peter Haas
Lesley Meguid



Domenico Russo
Independent



Andy Waar
Independent



Jozef "Dodo" Prazenec
Inekafe



Marek "J.C. Vandel" Virsik
Horkyze Slize



Chen Pai-Chou
"Mr.Q" Jay Chou

Ukraine

UK



Van
Seraphim



Alex Fantaev



Volodimir Kokhan,



Alexandr Murenko



Alexandr Lyulyakin



Oliver Askew
The Young Knives



Antton Lant
Def-Con-One/Dryll



Lee Barratt
Gallows



Jason Bowld
Slaves To Gravity



Rees Bridges
Dirty Vegas



Ben Carter
Evile



Clem Cattini
The Tornados/ Joe Meek



Neil Cooper
Therapy



Josh Devine
Charlie Drew/DOT08 Winner



Ed Dutton
Rolo Tomassi



Pete Ellard
Scouting For Girls



Shaney Forbes
Empirica



Toby Goodman
Independent



Jon Ginger Hamilton
WV Brown/Pete Andre



Bob Henrutt
Kinks, Argent



James Hester
Malakai/ Cars On Fire



Mark Holub
Ledbib



Ric Lee
Ten Years After



Pete Riley
Keith Emerson



Paul Slowly
Ali Campbell



Gian Tomaharu
ElectricEel Shock



Kapil Trivedi
Mystery Jets

USA



Steve White
Session/ Educator



Tom Winch
Hexes



Bob Armstrong
Educator



Dan Searle
Architects



Grant Kershaw
Diagram of the Heart



Mike Griffiths
Attack Attack



Lawrence Sinocence



Paul Hose
Educator



Chris Adler
Lamb Of God



Sam Aliano
Lukas Rossi,Rockstar: Supernova



Elias Andra
Dead By Sunrise, Julien K



Gregg Bissonette
International Recording and Touring artist



John Boecklin
Devil Driver



Rick Brothers
Smokey Lonesome



Jodan Burns
Strung Out



Will Calhoun
Living Colour



Dom Famularo
Educator



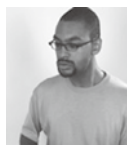
Liberty Devitto
Independent, Educator



Mylious Johnson
Jovanotti, Tiziano Ferro, Kid, Guch



Waldo Madera
Ricky Martin, Juanes



Jason Marsalis
Marcus Roberts



Mitch Marine
Dwight Yokum



Marty Morell
Duke Ellington



Doug Bush
Educator



Jeff Crowell
Educator



Nicholas Crescenzo
The Dear Hunter



Niosho Jackson
Independent



Jeff Crowell
Educator



Nicholas Crescenzo
The Dear Hunter



Niosho Jackson
Independent



Gerald Myles
Educator



Chris Pennie
Coheed And Cambria



Milke Peters
Cancer Bats



Ralph Peterson
Educator, Berklee College of Music



Wardell Pearson, JR
Vivian Green



Tony Pia
DOOBIE BROTHERS



Aquiles Priester
Hangar



Tony Coleman
B.B.King



Walfredo Reyes Jr.
Lindsey Buckingham, Santana



Herlin Riley
Wynton Marsalis



Nick D'Virgilio
Cirque du Soleil



Darrell Robinson
N.E.R.D., Queen Latifa



Stéphane Chamberland
Independent



Billy Copeland
Billy Ray Cyrus



Malcolm Cross
Pete Yorn



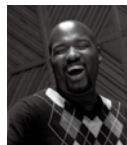
Marko Djordjevic
Sveti



Glen Sobel
Elliott Yamin



Tom Van Shaik
Robert Earl Keen



Derico Watson
George Duke, Victor Wooten, Educator



Mat Wolfe
Byzantine



Rashid Williams
John Legend



Damien Schmitt
Independent



Lee Edward Pearson II



Matt Halpern
Periphery



Pat Van Belle
Educator



D J Bonebrake
The Syncopators



David Calarco
Educator / Jazz Conclave



Judy Cocuzza
Independent



Cole Marcus
Independent



Vince Ector C/O Lopes-Ector
Dizzy Gillespie All Star Band



Marlon Simon
Educator



Pete Sweeney
Educator



Stacey Lamont Sydnor
LA Studio

Singapore



John O'Reilly
Trans-Siberian Orchestra



Benjamin Teddar
Educator



DR. Don Parker
Educator



Sal Basri
Pro Musique Schoo



Alfe Kim
La'dies Enigmatic Army, Pro Musique School, Drum Xchange Singapore



Brandon Khoo
Ang Moh Pal



James Pang
Founder, My Drums School



Tan Boon Geen



Bobby Singh



PERFORMANCE IS EVERYTHING™

See the entire selection of Mapex Drums and Hardware at mapexdrums.com. Product specifications described herein are subject to change without notice. Cymbals are not included, except where indicated. Some items may only be available via special order, see dealer for details.

Due to limitations in photographic and lithographic processes, illustrated colors may vary slightly from actual colors offered. Since wood grain patterns appear randomly in raw materials, wood grain on product pictured will differ from actual product.

Black Panther®, ITS™, OS Cymbal Accentuators™ and Tri-Nodal are trademarks of Mapex, Incorporated. Remo® is a registered trademark of Remo®. Mapex® is a registered trademark of Mapex®. Mapex thanks MEINL, PAISTE, SABIAN and ZILDJIAN for their support in product photography.

Pictured on front cover, Chris Adler, Rocket Town, Nashville, TN. © 2011 KHS America.