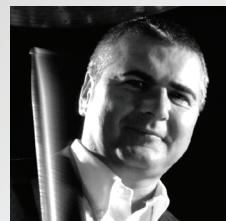




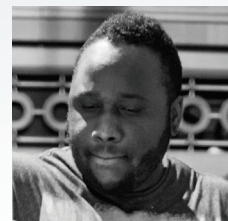
NICK CRESCENZO
THE DEAR HUNTER

RASHID WILLIAMS
JOHN LEGEND

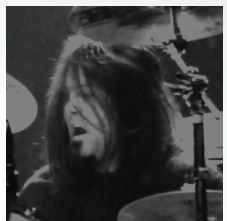
FALCON ARTISTS



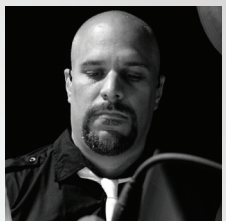
Steve White
Paul Weller & The Players



Lyndon Rochelle
Esperanze Spalding



John Beocklin
Devil Driver



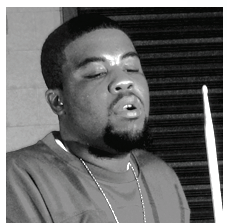
Waldo Madera
Juanes



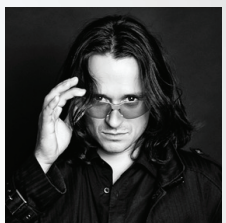
Walfredo Reyes Jr.
Chicago



Dan Carle
After The Burial



Darrell Robinson
Snoop Dogg



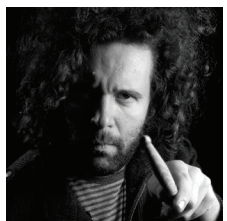
Damien Schmitt
Jean Luc Ponty



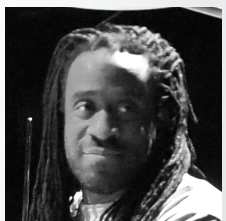
Jason Holt
Allen Stone



Dom Famularo
Educator



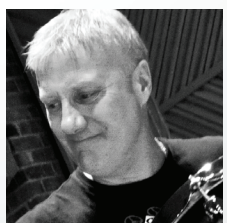
Stephen Gilchrist
Recording Artist



Will Calhoun
Living Colour



Mark Beckett
Nashville Studio



Gregg Bissonette
LA Studio

WWW.MAPEXDRUMS.COM

MPX12PM305



FALCON
HARDWARE



HI-HAT STAND



The **Lockable Quick-Release Wingnut** on the clutch makes it simple to install or remove the top hi-hat cymbal.



The **Extreme Height Adjustment** allows cymbals to be positioned from very low for open-hand playing styles to extremely high.



A **Foldable Footboard** clips to the stand for easy transportation and secures into the playing position for increased stability.



The **Footboard Height Adjustment** allows for optimal footboard angle and feel across a variety of playing styles.



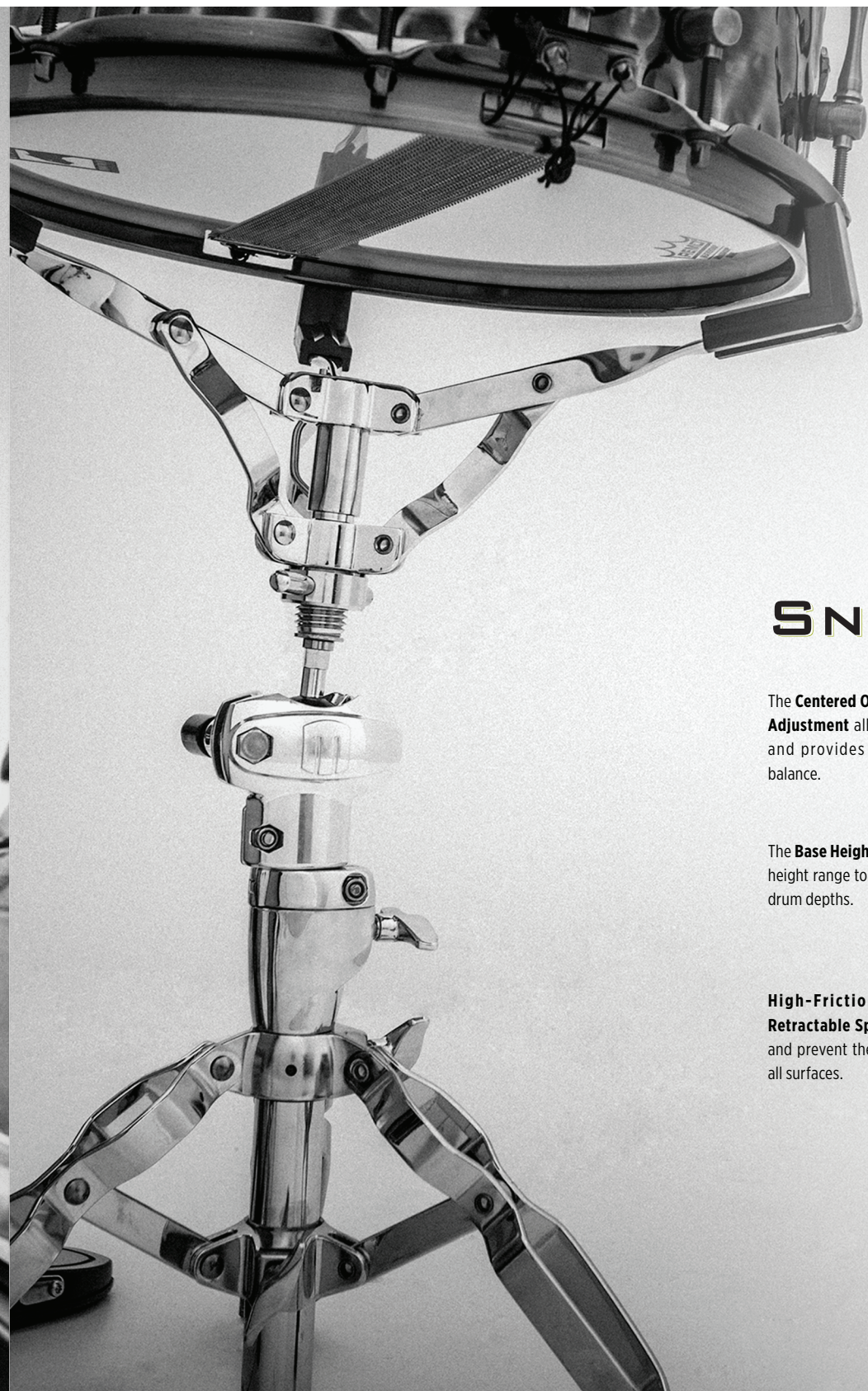
The **Tension Adjuster** has directional indicators showing Light (L) versus Heavy (H) settings across a wide range of possible tension.



Removable Swivel Legs fit into any set-up position and can detach easily when using double bass drums or attaching to a rack.



High-Friction Rubber Feet with **Retractable Spikes** increase traction and prevent the stand from sliding on all surfaces.

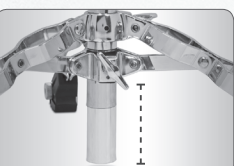


SNARE STAND

The **Centered Omni-Ball Snare Basket Adjustment** allows easier positioning and provides better overall stand balance.



The **Base Height Adjustment** increases height range to accommodate all snare drum depths.



High-Friction Rubber Feet with **Retractable Spikes** increase traction and prevent the stand from sliding on all surfaces.



BASS PEDAL

Interchangeable Drives enable a customized pedal feel to match a variety of playing styles (strap and direct drives sold separately)



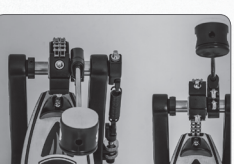
Interchangeable Beater Weights provide complete control over the balance and lag of the beater.



The **Footboard Height Adjustment** allows for complete adjustment of the footboard angle and playing position.



The **Beater Angle Adjustment** provides independent control of the beater position at rest and the length of the throw.



The **Self-Adjusting Hoop Clamp** pivots to match any bass drum angle, reducing stress on the hoop and keeping the base plate flat on the floor.



A **Reduced Base Plate Size** allows for better snare stand and floor tom positioning.



BOOM STAND

A **Super-Glide Stepless Tilter** allows for quick and unlimited multi-axis cymbal positioning.



A **Single-Point Boom Arm Adjuster** with **Position Markers** secure the boom arm in any desired position.



The **Hide-Away Boom Arm** allows for maximum cymbal versatility along with compact stand storage.



The **Lockable Quick-Release Wingnut** secures cymbals during play and speeds up setup and breakdown.

