



S A T U R N



I N T E R N A T I O N A L V E R S I O N



Saturn is a drum that won't rest on its laurels. Its look, its tone, and its robust construction have made it the only touring & recording choice for a community of professional drummers around the globe. With the addition of the SONIClear™ Bearing Edge and the SONIClear™ Tom Holder, Saturn V has been enhanced to offer easier tuning and a fuller, rounder tone with a deeper, darker pitch.

FEATURES & CONFIGURATIONS.....	3
MH EXOTIC EDITION.....	11
MH EDITION.....	19





WILL CALHOUN  
LIVING COLOUR

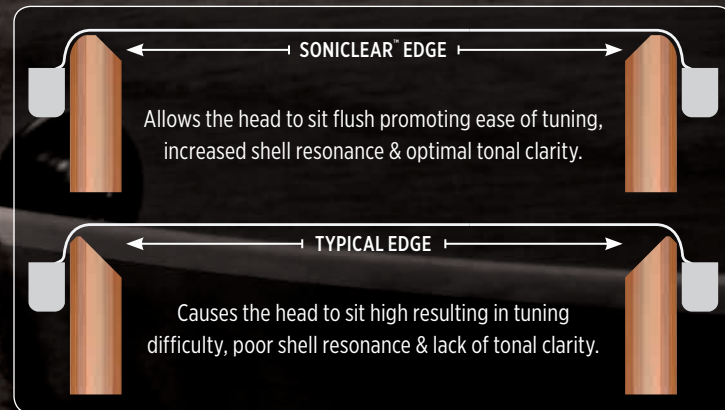
SATURN V ARRIVES WITH NEW FEATURES THAT'LL ENHANCE AN ALREADY KILLER SOUND. DO YOU LIKE FAT AND DENSE FLOOR TOMS? HOW ABOUT CLEAR AND FOCUSED RACK TOMS? ANYBODY FOR BASS DRUMS THAT KICK YOU IN THE CHEST?





# SONICLEAR

The **SONIClear™ Bearing Edge** is standard on all Saturn V shells and allows the drumhead to sit flatter and make better contact with the shell. The result is a stronger and deeper fundamental pitch, effortless and consistent tuning, and a significantly expanded tuning range. For the serious player, the increased head to edge contact increases shell vibration, allowing the sonic nuances of the Hybrid shell to stand out.



## SONICLEAR™ EDGE AUDIO TEST SESSIONS

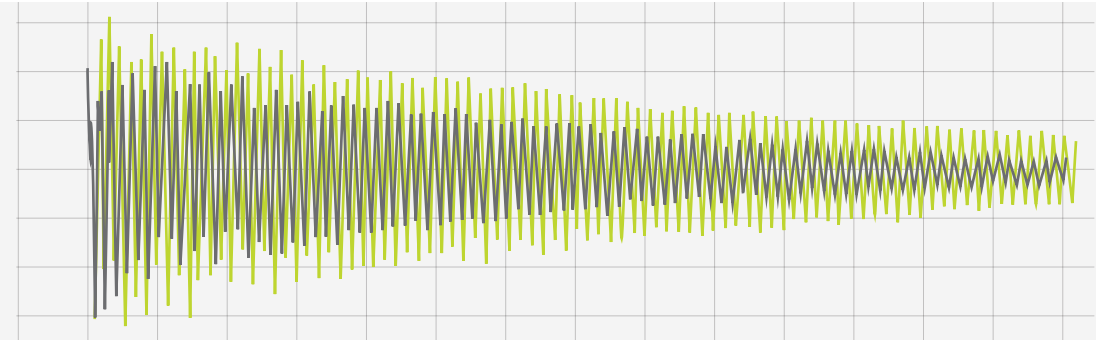
### SOUND

The increased drumhead-to-shell contact achieved by the SONIClear™ Edge enhances shell vibration, resulting in the biggest sound possible from the drum.

**Oscilloscope Example:** The Green Waveform is a recording of a drum with the SONIClear™ Edge. The dark grey waveform is a drum with a typical edge. Tuned to the same pitch and recorded identically, it's clear that the drum with the SONIClear™ Edge produces a much larger waveform from the initial strike through the full sustain of the note.

#### Oscilloscope Comparison Example:

- SONIClear™ Edge
- Typical Edge



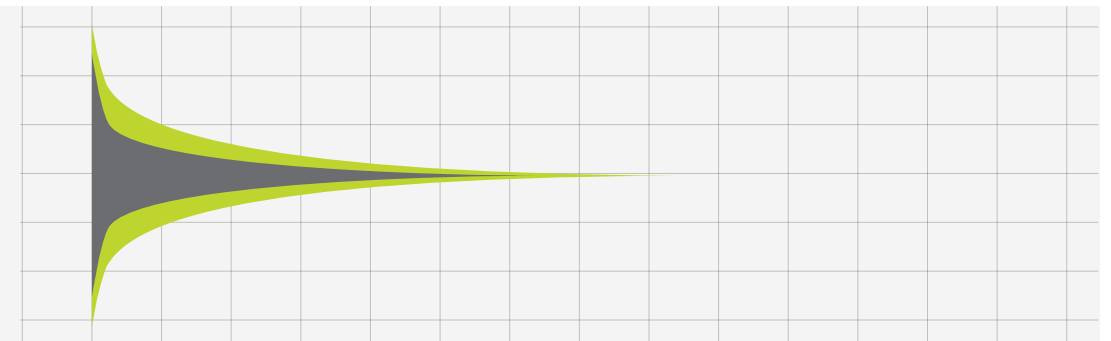
### SUSTAIN

Because the drumhead sits flat on the SONIClear™ Edge, the tension applied during tuning is more balanced and stress-free. This allows the drumhead to vibrate freely and fully.

**Waveform Comparison Example:** The Green Waveform is a recording of a drum with the SONIClear™ Edge. The dark grey waveform is a drum with a typical edge. The size of the SONIClear™ waveform indicates a lower and stronger fundamental pitch while the length indicates a longer sustain compared to a typical edge.

#### Waveform Comparison Example:

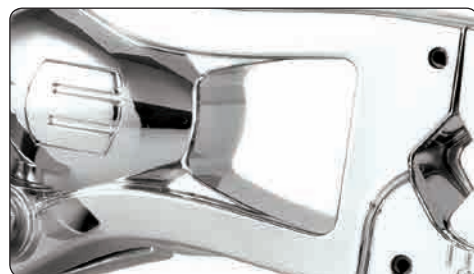
- SONIClear™ Edge
- Typical Edge





# SONICLEAR™

The **SONIClear™ Tom Holder** is the standard attachment mechanism for all Saturn V rack toms. The low-mass bridge preserves vibration in the head and shell, enhancing resonance and increasing tonal clarity.



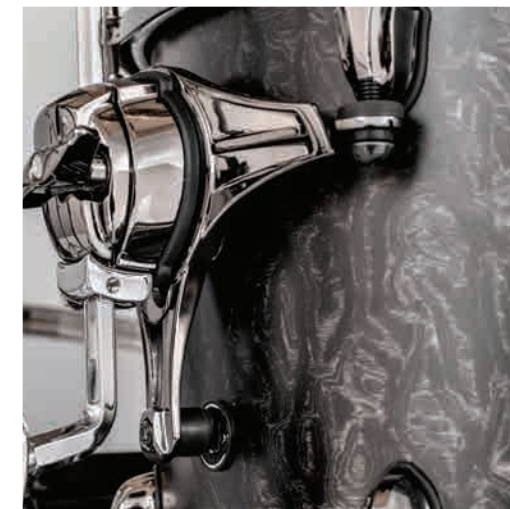
The low-mass bridge preserves vibration in the head and shell, enhancing resonance and increasing tonal clarity.



An Omni-ball arm adjustment allows toms to be positioned at any angle and inverted for convenient bottom head tuning.



The spring-hinged adjustable clamp with position markings accommodates tube diameters from 5/8" to 1 1/4" and makes setup easy and consistent.



## SONICLEAR™ TOM SUSPENSION

Hate it when you see more of the mount than you do of the shell? Us too.

Increases overall resonance by preserving vibration in the shell and heads.

Doesn't touch the tension rods, helping heads stay in tune and making them easy to change.



## LOW-CONTACT CLAWS

Tired of your bass drum claws looking like everyone else's? Try these.

Increase resonance by reducing weight and contact on the counterhoop.

Rubber gaskets protect the hoop finish and prevent the claw from rattling during play.



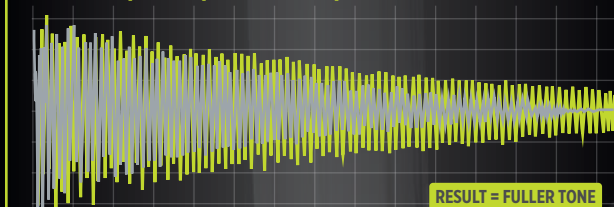
## MEMORY-MARK BASS DRUM SPURS

Ever use a ruler to make them even? Then this is for you.

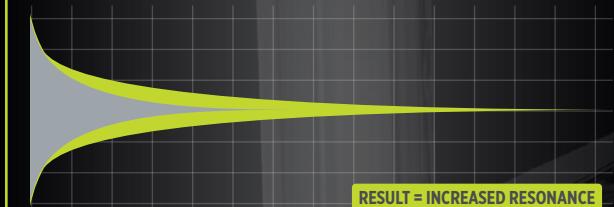
Markings on the spur rods help players recall their settings and ensure level set-up.

Circular treads on a rounded rubber foot prevent the drum from sliding during play.

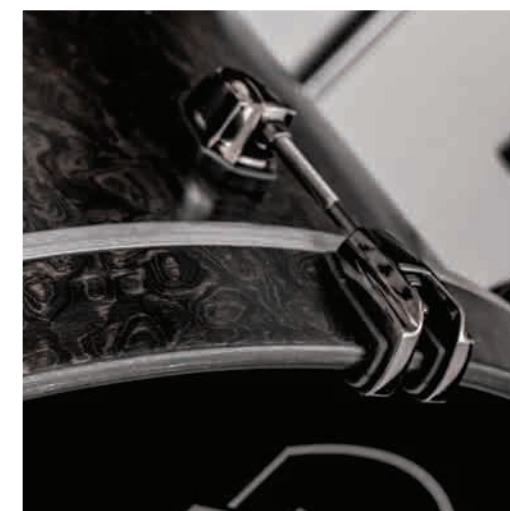
### Oscilloscope Comparison Example



### Waveform Comparison Example



■ SONIClear™ Tom Clamp    ■ Typical Tom Clamp



## FREE-FLOATING BASS DRUM MOUNT\*

The sound of a virgin bass drum or the convenience of a mount. Why not both?

Mount floats on suspended rails to maintain a virgin shell sound.

Sliding mount bracket helps players find their ideal rack tom distance.

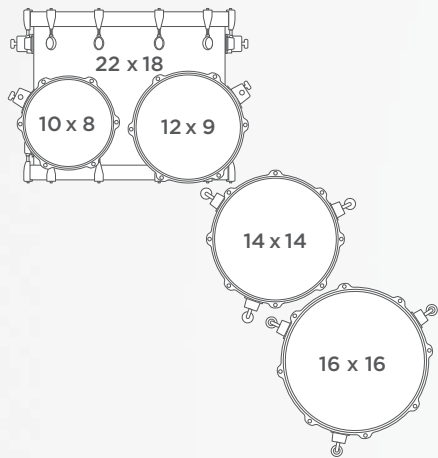
\*Sold Separately.



# CONFIGURATIONS

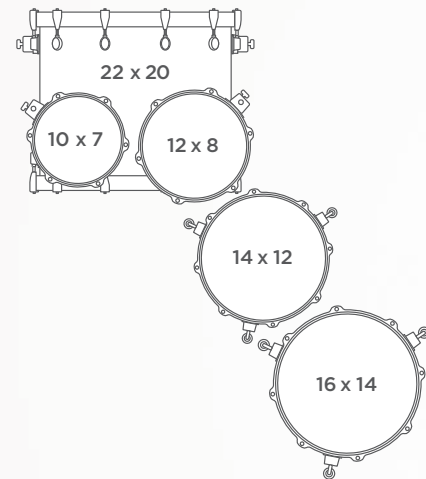
The Saturn V Series offers a variety of configurations designed to fit diverse musical applications. Whether the preference is fast and focused or big and booming, every drummer can find a setup to suit their style.

## SV628X Studioease Shell Pack



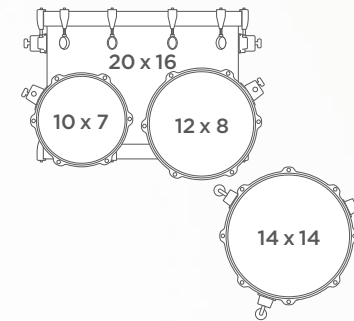
[2↑ - 2↓]

## SV628XE Studioease Shell Pack (Fast Sizes)



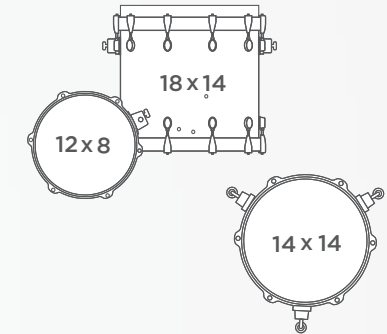
[2↑ - 2↓]

## SV504X Jazz Shell Pack



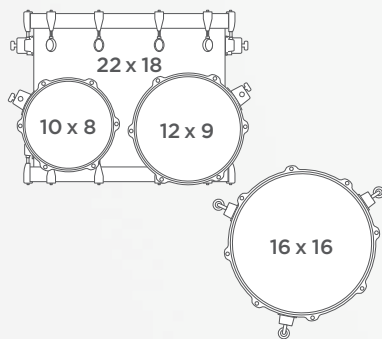
[2↑ - 1↓]

## SV481X Club Shell Pack



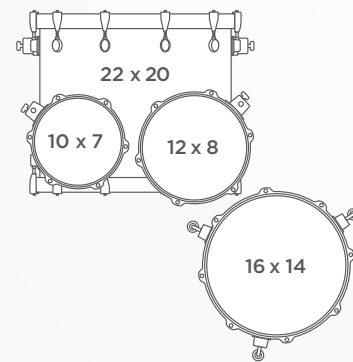
[1↑ - 1↓]

## SV529X Rock Shell Pack



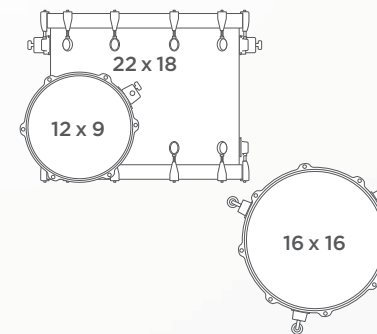
[2↑ - 1↓]

## SV529XE Rock Shell Pack (Fast Sizes)



[2↑ - 1↓]

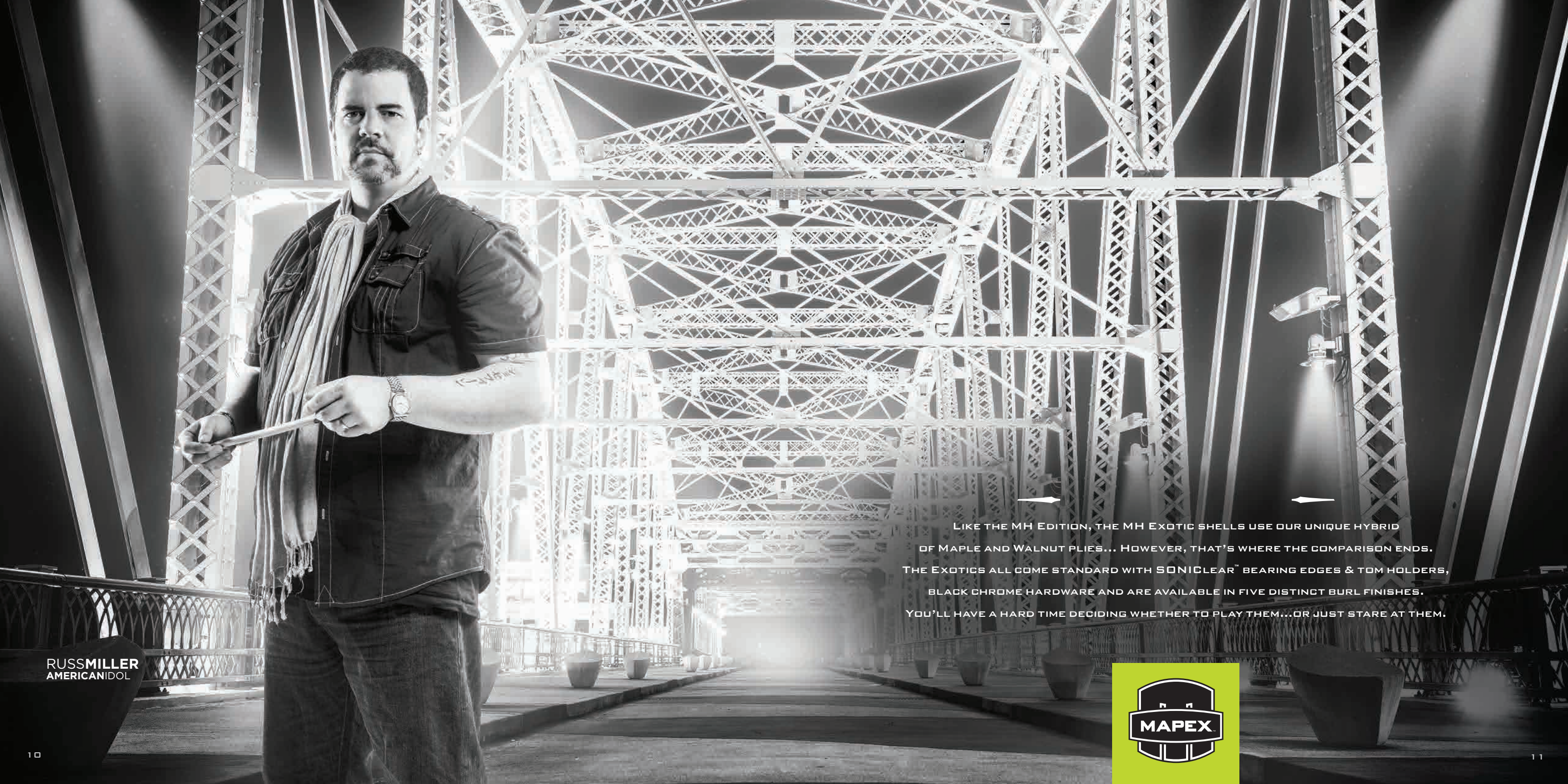
## SV426X Rock Shell Pack



[1↑ - 1↓]







RUSMILLER  
AMERICANIDOL

←

→

LIKE THE MH EDITION, THE MH EXOTIC SHELLS USE OUR UNIQUE HYBRID OF MAPLE AND WALNUT PLYS... HOWEVER, THAT'S WHERE THE COMPARISON ENDS. THE EXOTICS ALL COME STANDARD WITH SONICLEAR™ BEARING EDGES & TOM HOLDERS, BLACK CHROME HARDWARE AND ARE AVAILABLE IN FIVE DISTINCT BURL FINISHES. YOU'LL HAVE A HARD TIME DECIDING WHETHER TO PLAY THEM...OR JUST STARE AT THEM.





## SATIN BLACK MAPLE BURL

This matte finish is anything but flat. The figured burl veneer shows clearly through the transparent satin black stain, giving this finish amazing depth and dimension. This kit won't be lost in the shadows.



Featured Set-up: Rock Shell Pack - [1↑ - 1↓]



## DEEP WATER MAPLE BURL

The deep blue burst over the maple burl veneer creates the sensation of the chasm opening up before your eyes, inviting you to dive into and explore its depths. Still waters run deep.



## CHERRY MIST MAPLE BURL

A vivid, red transparent lacquer brings the unique figuring of the maple burl underneath it to life. Go ahead and let yourself be seduced by its charm and elegance: after all, we're all slaves to our passions.





## AMBER MAPLE BURL

This finish is all about opulence. A luxuriant golden stain accentuates the detail of the exotic veneer, showing off everything there is to show. If you've got it, flaunt it.



## NATURAL MAPLE BURL

The distinctive burl patterns are highlighted by a high-gloss clear lacquer, allowing the natural beauty of the wood to be the star of its own show. Simplicity is indeed the ultimate sophistication.



Featured Set-up: Rock Shell Pack - [2↑ - 1↓]



Featured Set-up: Jazz Shell Pack - [2↑ - 1↓]





RASHID WILLIAMS  
JOHN LEGEND

THE MH EDITION INCLUDES A MIX OF TRANSPARENT LACQUER, SPARKLE LACQUER, AND WRAP FINISHES THAT SPAN FROM TRADITIONAL TO PROGRESSIVE. MAKE NO MISTAKE... SATURN IS STILL ALL ABOUT THE MAPLE





With shimmering diagonal streaks of blue and gold over a black base, the Marine Spiral wrap finish is intense and hypnotic. Be careful not to stare too long.



Featured Set-up: Studioease Shell Pack - [2↑ - 2↓]



## RED STRATA PEARL

The red and black pearl wrap finish is a chameleon, looking bold and aggressive or refined and classy depending on the style in which it's played. So which personality will you bring out of it?



Featured Set-up: Studioease Shell Pack - [2↑ - 2↓]



## RED/BLUE HYBRID SPARKLE

This lacquered sparkle finish blends fine blue and red flakes that each catch the light at different angles, giving this kit an iridescent quality. Is it red or blue... or purple? You decide.



Featured Set-up: Rock Shell Pack - [2↑ - 1↓]



## TRANSPARENT ESPRESSO WALNUT

With its transparent espresso stain and high-gloss lacquer, this finish will be a centerpiece in any room. You can use it as furniture when you're not playing. Just keep your feet off of it.



## GRANITE SPARKLE

The black and silver flakes and high-gloss lacquer combine to produce a unique granite sparkle that will catch the light and glitter like quartz. Breaking up all those rocks wasn't easy... but it was worth it.



Featured Set-up: Jazz Shell Pack - [2↑ - 1↓]



Featured Set-up: Rock Shell Pack - [1↑ - 1↓]



# FALCON

HARDWARE

In the studio. On tour. In the woodshed. Falcon's convenience and simplicity keep your mind where it needs to be... ON PLAYING!

## PF1000

- Interchangeable Beater Weights
- Beater Angle Adjustment
- Interchangeable Drives
- Footboard Height Adjustment
- Reduced Base Plate Size
- Self-Adjusting Hoop Clamp

## SF1000

- Centered Omni-Ball Snare Basket Adjustment
- Base Height Adjustment
- High-Friction Rubber Feet with Retractable Spikes

## HF1000

- Lockable Quick-Release Wingnut
- Extreme Height Adjustment
- Removable Swivel Legs
- Tension Adjuster
- Footboard Height Adjustment
- Foldable Footboard
- High-Friction Rubber Feet with Retractable Spikes

## BF1000

- Lockable Quick-Release Wingnut
- Super-Glide Stepless Tilter
- Single-Point Boom Arm Adjuster with Position Markers
- Hide-Away Boom Arm



# SATURN

ARTISTS



Chris Adler  
Lamb Of God



Jordan Burns  
Strung Out



Josh Devine  
One Direction



Liberty DeVitto  
Billy Joel & Slim Kings



Dom Famularo  
Global Drumming Ambassador



Steve Fidyk  
Steve Fidyk Parlour Project



David Field  
Prima Donna



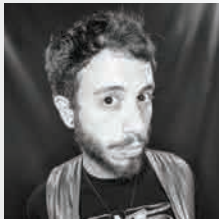
Sean Fuller  
Florida Georgia Line



Matt Halpern  
Periphery



Mitch Marine  
Dwight Yoakam



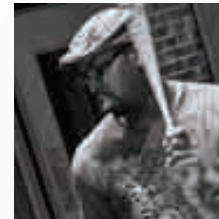
Aaron McVeigh  
Foxy Shazam



Russ Miller  
American Idol



Anika Nilles  
International Artist



Lee Pearson Jr  
Chris Botti



Chris Pennie  
Studio



Ralph Peterson  
Berklee College Of Music



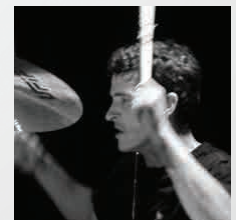
Aquiles Priester  
Tony MacAlpine & Primal Fear



Darrell Robinson  
Pharrell Williams



Glen Sobel  
Alice Cooper



Burke Thomas  
Duff McKagan's Loaded

WWW.MAPEXDRUMS.COM